

## TARA ULTRA PIVOT Single-lever mixer - Platinum

33 845 875 Product version from 5/3/2021



- 552mm projection
- pivotable spout 360°
- air-enriched flow
- height of mixer 372 mm
- height up to aerator 290 mm
- rosette 55 mm
- hole diameter 30 mm
- max. flow 8 l/min at 3 bar flow pressure
- lead-free
- This product can help a building meet the requirements of Green Building Rating Systems, e.g. LEED®, BREEAM®, DGNB

|   |                                |               |
|---|--------------------------------|---------------|
|    | Platinum                       | 33 845 875-08 |
|    | Chrome                         | 33 845 875-00 |
|    | Brushed Platinum               | 33 845 875-06 |
|    | Durabronze (23kt Gold)         | 33 845 875-09 |
|    | Dark Chrome                    | 33 845 875-19 |
|    | Brushed Durabronze (23kt Gold) | 33 845 875-28 |
|    | Brushed Bronze                 | 33 845 875-42 |
|    | Brushed Champagne (22kt Gold)  | 33 845 875-46 |
|    | Champagne (22kt Gold)          | 33 845 875-47 |
|   | Brushed Chrome                 | 33 845 875-93 |
|  | Brushed Dark Platinum          | 33 845 875-99 |

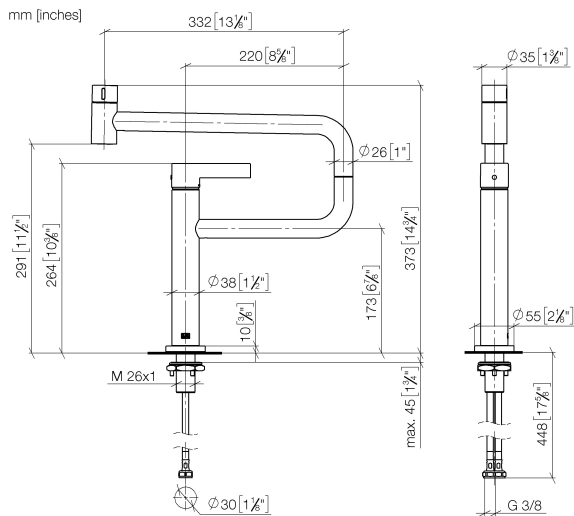
### Recommended miscellaneous

**Strainer waste with control handle 10 710 970-08  
- Platinum**

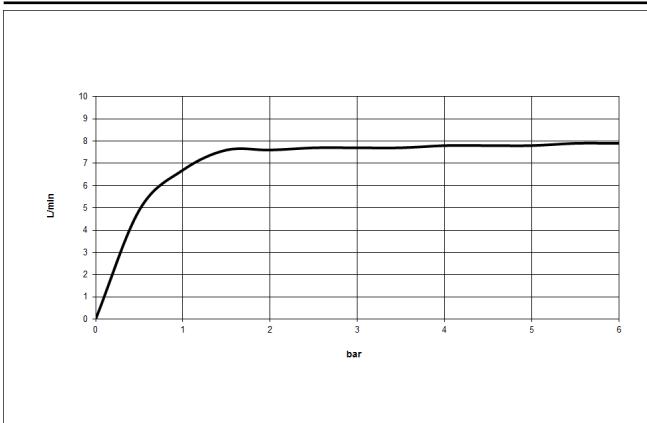


## TARA ULTRA PIVOT Single-lever mixer - Platinum

33 845 875 Product version from 5/3/2021



### Flow rate chart



## Codes & Standards

DIN 4109

Executive Order  
no. 1007

ISO 3822

Ü-Zeichen



## TARA ULTRA PIVOT Single-lever mixer - Platinum

---

33 845 875 Product version from 5/3/2021

### Certificates

---

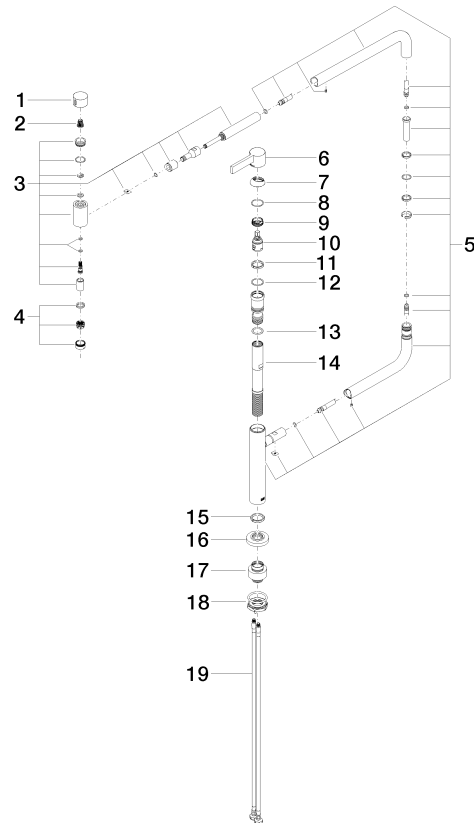
LGA\_28

GDV\_0400

## TARA ULTRA PIVOT Single-lever mixer - Platinum

33 845 875 Product version from 5/3/2021

Parts for other  
finishes can be found  
here: [Chrome](#)



### Spare parts list

| No. | Item Number        | Name            | Quantity used | Delivery time |
|-----|--------------------|-----------------|---------------|---------------|
| 1   | 09 20 62 025-08    | handle          | 1             | 60            |
| 2   | 90 12 12 002 00 90 | fixing cap      | 1             | 2             |
| 3   | 90 19 87 001 00-08 | spout           | 1             | 40            |
| 4   | 90 23 01 026 07-08 | aerator         | 1             | 40            |
| 5   | 90 28 22 257 00-08 | joint           | 1             | 40            |
| 6   | 90 20 87 004 00-08 | handle          | 1             | 40            |
| 7   | 09 28 30 013-08    | cover           | 1             | 40            |
| 8   | 09 14 10 091 90    | seal            | 1             | 2             |
| 9   | 09 24 04 266 90    | nut             | 1             | 2             |
| 10  | 90 15 05 042 00 90 | cartridge       | 1             | 2             |
| 11  | 09 28 10 156 90    | ring            | 1             | 2             |
| 12  | 90 14 10 063 00 90 | seal            | 1             | 2             |
| 13  | 09 14 10 081 90    | seal            | 1             | 2             |
| 14  | 09 30 01 126 90    | connection      | 1             | 2             |
| 15  | 09 28 10 159 90    | ring            | 1             | 2             |
| 16  | 09 27 87 033-08    | rosette         | 1             | 40            |
| 17  | 12 845 970 90      | Extension set - | 1             | 2             |
| 18  | 04 30 11 085 87 90 | fixing set      | 1             | 2             |
| 19  | 04 30 04 101 00 90 | hose            | 2             | 2             |