

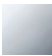

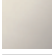
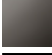


TARA ULTRA Profi single-lever mixer - Chrome

TARA ULTRA


33 860 875



- 240mm projection
 - pivotable 360°
 - air-enriched flow and spray flow
 - height of mixer 685 mm
 - height up to aerator 129 mm
 - hole diameter 35 mm
 - sprayface with anti-scaling system
 - max. flow 8 l/min at 3 bar flow pressure
 - lead-free
 - This product can help a building meet the requirements of Green Building Rating Systems, e.g. LEED®, BREEAM®, DGNB
- Intrinsic protection against back flow.


| | | |
|---|-----------------------|---------------|
|  | Chrome | 33 860 875-00 |
|  | Brushed Platinum | 33 860 875-06 |
|  | Platinum | 33 860 875-08 |
|  | Dark Chrome | 33 860 875-19 |
|  | Brushed Chrome | 33 860 875-93 |
|  | Brushed Dark Platinum | 33 860 875-99 |

Recommended miscellaneous



Strainer waste with control handle 10 712 970-00
- Chrome

Recommended miscellaneous



Dispenser without rosette - 82 424 970-00
Chrome

33 860 875



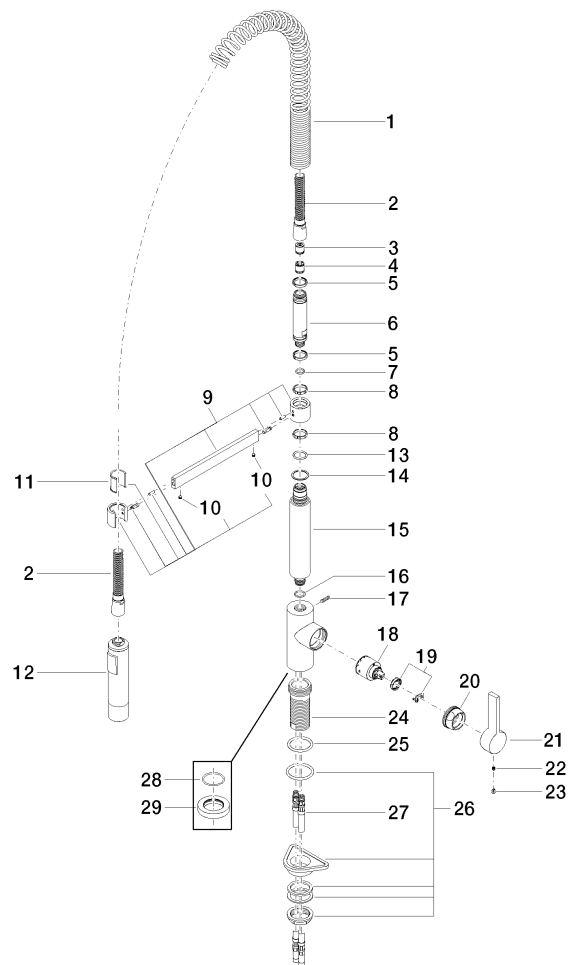
Flow rate chart



Certificates

LGA_18903. Belgaqua_22_277_2
7_3.

33 860 875



33 860 875

Spare parts list

| No. | Item Number | Name | Quantity used | Delivery time |
|-----|--------------------|---------------------|---------------|---------------|
| 1 | 09 16 02 035 90 | spring | 1 | 2 |
| 2 | 90 30 02 065 00-00 | hose | 1 | 10 |
| 3 | 09 23 01 046 90 | back-flow preventer | 1 | 2 |
| 4 | 90 23 01 141 00 90 | back-flow preventer | 1 | 2 |
| 5 | 09 14 15 024 90 | ring | 2 | 2 |
| 6 | 09 30 01 067 10-00 | adaptor | 1 | 10 |
| 7 | 90 14 10 077 00 90 | seal | 1 | 2 |
| 8 | 09 28 10 181 90 | ring | 2 | 2 |
| 9 | 04 17 20 029 00-00 | holder | 1 | 10 |
| 10 | 90 31 11 112 00 90 | pin | 2 | 2 |
| 11 | 09 18 40 118 90 | sleeve | 1 | 2 |
| 12 | 04 12 11 092 10-00 | shower | 1 | 10 |
| 13 | 09 14 10 100 90 | seal | 1 | 2 |
| 14 | 09 28 10 122 90 | ring | 1 | 2 |
| 15 | 09 11 10 072 10-00 | connection | 1 | 10 |
| 16 | 90 14 10 055 00 90 | seal | 1 | 2 |
| 17 | 04 31 11 113 00 90 | pin | 1 | 2 |
| 18 | 90 15 05 061 00 90 | cartridge | 1 | 60 |
| 19 | 90 28 10 148 00 90 | accessories | 1 | 2 |
| 20 | 09 24 04 107-00 | nut | 1 | 10 |
| 21 | 09 20 79 040-00 | handle | 1 | 10 |
| 22 | 90 31 11 030 00 90 | pin | 1 | 2 |
| 23 | 09 31 20 017 90 | plug | 1 | 2 |
| 24 | 09 30 01 111 20 90 | sleeve | 1 | 2 |
| 25 | 09 14 10 036 90 | seal | 1 | 2 |
| 26 | 04 23 10 044 02 90 | fixing set | 1 | 2 |
| 27 | 04 30 04 016 00 90 | hose | 2 | 60 |
| 28 | 09 14 10 149 90 | seal | 1 | 2 |
| 29 | 09 28 10 035-00 | rosette | 1 | 10 |