

SYNC Profi single-lever mixer - Platinum

SYNC

33 865 895



- 200mm projection
- Flexible silicone hose with large operating range of up to 350 mm
- pivotable spout 360°
- Optional swivel limiter available with swivel limiter set 12 821 970 90
- This product can help a building meet the requirements of Green Building Rating Systems, e.g. LEED®, BREEAM®, DGNB
- air-enriched flow and spray flow
- height of mixer 451 mm
- height up to aerator 119 mm
- hole diameter 35 mm
- sprayface with anti-scaling system
- max. flow 9.5 l/min at 3 bar flow pressure
- lead-free

Intrinsic protection against back flow.

| | | |
|--|--------------------------------|---------------|
| | Platinum | 33 865 895-08 |
| | Chrome | 33 865 895-00 |
| | Brushed Platinum | 33 865 895-06 |
| | Durabronze (23kt Gold) | 33 865 895-09 |
| | Dark Chrome | 33 865 895-19 |
| | Brushed Durabronze (23kt Gold) | 33 865 895-28 |
| | Matte Black | 33 865 895-33 |
| | Brushed Champagne (22kt Gold) | 33 865 895-46 |
| | Champagne (22kt Gold) | 33 865 895-47 |
| | Brushed Chrome | 33 865 895-93 |
| | Brushed Dark Platinum | 33 865 895-99 |

Recommended miscellaneous

Swivel limitation set - 12 821 970 90



Recommended miscellaneous

Dispenser without rosette - Platinum 82 424 970-08

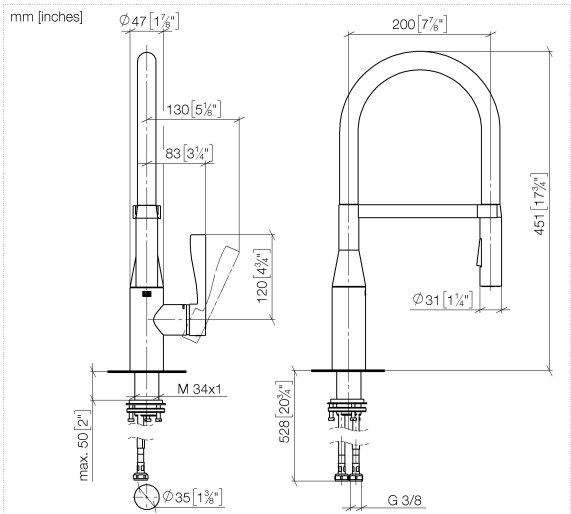


Recommended miscellaneous

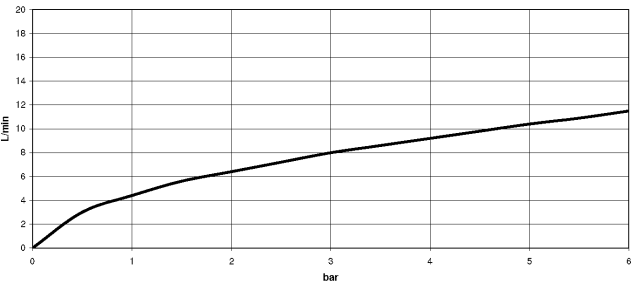
Strainer waste with control handle - Platinum 10 712 970-08



33 865 895



Flow rate chart



Codes & Standards

DIN 4109

EN 1717

ISO 3822

Ü-Zeichen



SYNC Profi single-lever mixer - Platinum

SYNC

33 865 895

Certificates

LGA_29

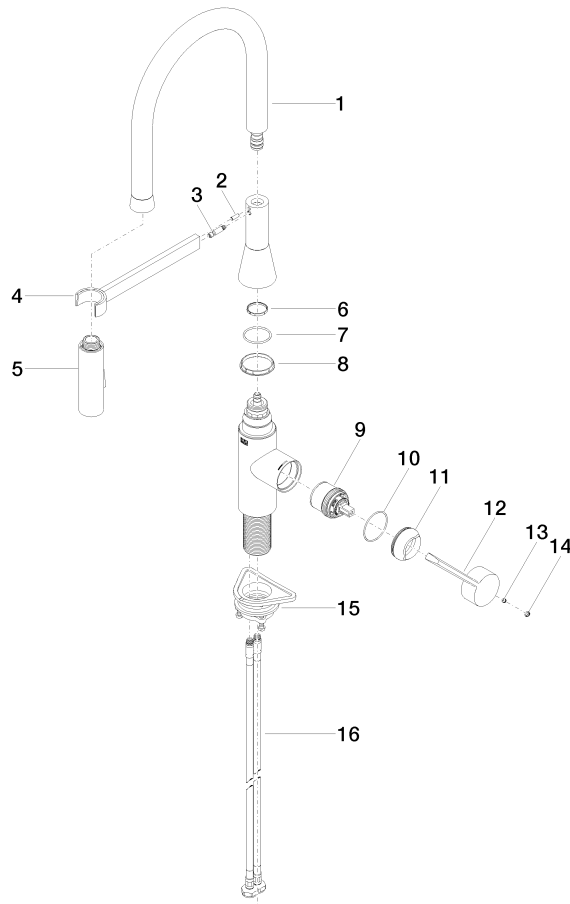
Belgaqua_21-027-2

33 865 895

Product version up to 5/19/2021

Product version from 5/19/2021 to 5/20/2021

Product version from 5/20/2021





SYNC Profi single-lever mixer - Platinum

SYNC

33 865 895

Spare parts list

Product version up to 5/19/2021

Product version from 5/19/2021 to 5/20/2021

Product version from 5/20/2021

| No. | Item Number | Name | Quantity used | Delivery time |
|-----|--------------------|------|---------------|---------------|
| | 90 30 02 100 00-08 | hose | 17 | 40 |