










ELIO Single-lever mixer Pull-out with spray function - Brushed Platinum

33 871 790 Product version from 4/1/2024



- 219mm projection
- pivoting spout 360°
- air-enriched flow and spray flow
- height of mixer 337 mm
- height up to aerator 292 mm
- hole diameter 35 mm
- fabric braided hose 1500 mm
- max. flow 8 l/min at 3 bar flow pressure
- lead-free
- This product can help a building meet the requirements of Green Building Rating Systems, e.g. LEED®, BREEAM®, DGNB

Intrinsic protection against back flow.

	Brushed Platinum	33 871 790-06
	Chrome	33 871 790-00
	Platinum	33 871 790-08
	Dark Chrome	33 871 790-19
	Brushed Durabronze (23kt Gold)	33 871 790-28
	Brushed Champagne (22kt Gold)	33 871 790-46
	Champagne (22kt Gold)	33 871 790-47
	Brushed Chrome	33 871 790-93
	Brushed Dark Platinum	33 871 790-99

Recommended miscellaneous

Strainer waste with control handle - Brushed Platinum 10 712 970-06



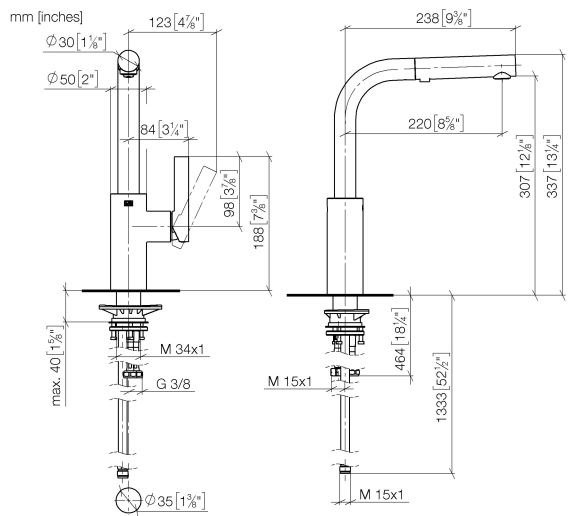
Recommended miscellaneous

Dispenser without rosette - Brushed Platinum 82 424 970-06

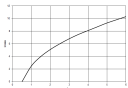


ELIO Single-lever mixer Pull-out with spray function - Brushed Platinum

33 871 790 Product version from 4/1/2024



Flow rate chart



Codes & Standards

DIN 4109

ISO 3822

Ü-Zeichen



ELIO Single-lever mixer Pull-out with spray function - Brushed Platinum

33 871 790 Product version from 4/1/2024

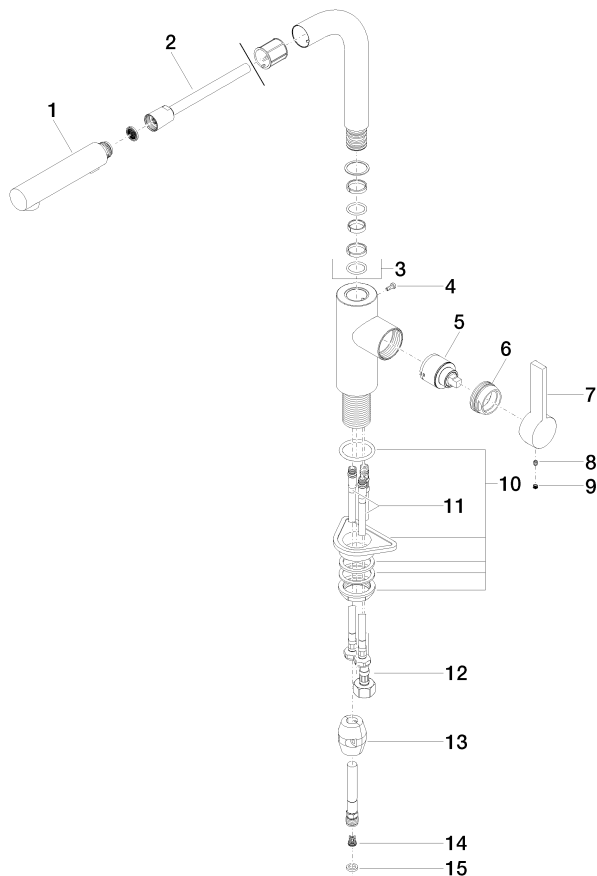
Certificates

LGA_38

ELIO Single-lever mixer Pull-out with spray function - Brushed Platinum

33 871 790 Product version from 4/1/2024

Parts for other
finishes can be found
here: [Chrome](#)



Spare parts list

No.	Item Number	Name	Quantity used	Delivery time
1	90 12 11 185 00-06	shower	1	30
2	90 30 02 062 00-06	hose	1	10
3	90 28 22 186 00-06	spout	1	10
4	09 30 30 054 90	screw	1	2
5	90 15 05 045 00 90	cartridge	1	2
6	09 24 04 141-06	nut	1	10
7	09 20 79 040-06	handle	1	10
8	90 31 11 030 00 90	pin	1	2
9	90 31 20 109 00 90	plug	1	2
10	04 30 11 040 00 90	fixing set	1	2
11	04 30 04 104 00 90	hose	2	2
12	04 30 04 029 00 90	hose	1	2
13	04 21 50 005 00 90	accessories	1	2
14	09 23 01 131 90	back-flow preventer	1	2
15	90 14 20 019 00 90	seal	1	2