

**ELIO Single-lever mixer Pull-out with spray function - Platinum**

33 871 790    Product version from 4/1/2024



- 219mm projection
  - pivoting spout 360°
  - air-enriched flow and spray flow
  - height of mixer 337 mm
  - height up to aerator 292 mm
  - hole diameter 35 mm
  - fabric braided hose 1500 mm
  - max. flow 8 l/min at 3 bar flow pressure
  - lead-free
  - This product can help a building meet the requirements of Green Building Rating Systems, e.g. LEED®, BREEAM®, DGNB
- Intrinsic protection against back flow.

	Platinum	33 871 790-08
	Chrome	33 871 790-00
	Brushed Platinum	33 871 790-06
	Dark Chrome	33 871 790-19
	Brushed Durabronze (23kt Gold)	33 871 790-28
	Brushed Bronze	33 871 790-42
	Brushed Champagne (22kt Gold)	33 871 790-46
	Champagne (22kt Gold)	33 871 790-47
	Brushed Chrome	33 871 790-93
	Brushed Dark Platinum	33 871 790-99

**Recommended miscellaneous**

**Strainer waste with control handle    10 712 970-08**  
**- Platinum**



## ELIO Single-lever mixer Pull-out with spray function - Platinum

33 871 790 Product version from 4/1/2024



### Flow rate chart



### Codes & Standards

DIN 4109

ISO 3822

Ü-Zeichen



## ELIO Single-lever mixer Pull-out with spray function - Platinum

---

33 871 790 Product version from 4/1/2024

### Certificates

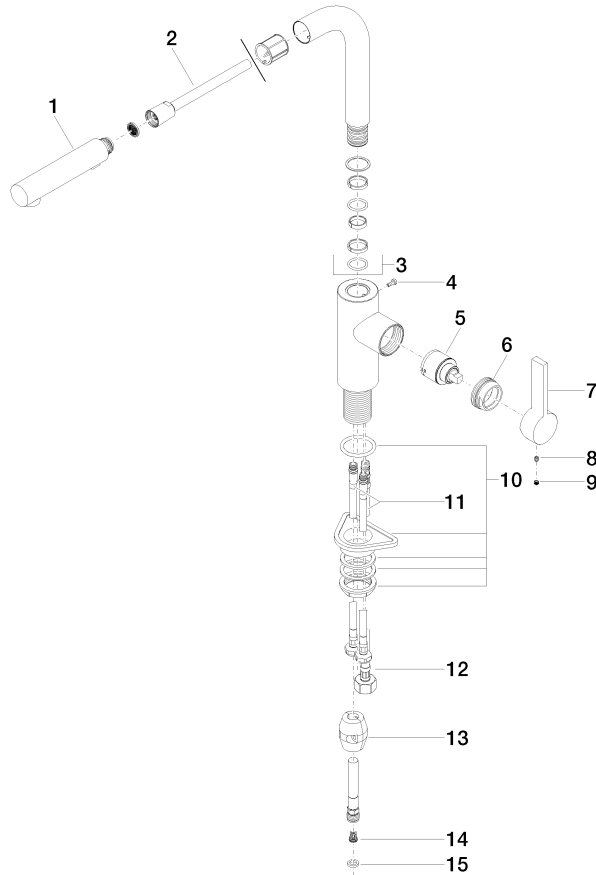
---

LGA\_38

## ELIO Single-lever mixer Pull-out with spray function - Platinum

33 871 790 Product version from 4/1/2024

Parts for other  
finishes can be found  
here: [Chrome](#)



### Spare parts list

No.	Item Number	Name	Quantity used	Delivery time
1	90 12 11 185 00-08	shower	1	-
Spare part can no longer be ordered, please order the replacement item				
2	90 30 02 062 00-08	hose	1	40
3	90 28 22 186 00-08	spout	1	40
4	09 30 30 054 90	screw	1	2
5	90 15 05 045 00 90	cartridge	1	2
6	09 24 04 141-08	nut	1	40
7	09 20 79 040-08	handle	1	40
8	90 31 11 030 00 90	pin	1	2
9	90 31 20 109 00 90	plug	1	2
10	04 30 11 040 00 90	fixing set	1	2
11	04 30 04 104 00 90	hose	2	2
12	04 30 04 029 00 90	hose	1	2
13	04 21 50 005 00 90	accessories	1	2
14	09 23 01 131 90	back-flow preventer	1	2
15	90 14 20 019 00 90	seal	1	2