

## TARA Shower pipe with shower thermostat without hand shower FlowReduce 220 mm - Brushed Dark Platinum

34 458 892 Product version from 5/1/2022



- shower with fixed riser projection 452mm
- Rain shower: PURE RAIN, max. flow rate 7 l/min (at 3 bar)
- Function from: 6 l/min
- rain shower Ø 220 mm
- rain shower with anti-scale system
- rotary diverter with volume control and shut-off function
- slide-on rosettes Ø 70 mm
- height of fittings up to rain shower (bottom edge) 964mm
- height of fittings up to top edge of elbow 1267mm
- gauge 150 mm - 13 mm
- metal shower hose 1750mm with integrated anti-twist protection
- 1/2" connection
- slide bar
- Pipe diameter 23.5 mm
- This product can help a building meet the requirements of Green Building Rating Systems, e.g. LEED®, BREEAM®, DGNB
- WRAS

This article does not include a hand shower!

Intrinsic protection against back flow.

	Brushed Dark Platinum	34 458 892-99
	Chrome	34 458 892-00
	Brushed Platinum	34 458 892-06
	Platinum	34 458 892-08
	Dark Chrome	34 458 892-19
	Brushed Durabronze (23kt Gold)	34 458 892-28
	Matte Black	34 458 892-33
	Brushed Bronze	34 458 892-42
	Brushed Champagne (22kt Gold)	34 458 892-46
	Champagne (22kt Gold)	34 458 892-47
	Brushed Chrome	34 458 892-93

## TARA Shower pipe with shower thermostat without hand shower FlowReduce 220 mm - Brushed Dark Platinum

34 458 892 Product version from 5/1/2022

### Required miscellaneous



**Hand shower FlowReduce -  
Brushed Dark Platinum**

28 012 979-99  
0010

### Required miscellaneous



**Hand shower - Brushed Dark  
Platinum**

28 016 979-99

### Required miscellaneous



**Hand shower - Brushed Dark  
Platinum**

28 012 979-99

### Required miscellaneous



**Hand shower FlowReduce -  
Brushed Dark Platinum**

28 016 979-99  
0010

### Required miscellaneous



**Hand shower FlowReduce -  
Brushed Dark Platinum**

28 018 979-99  
0010

### Required miscellaneous



**SERIES-VARIOUS Hand shower -  
Brushed Dark Platinum**

28 029 979-99

### Required miscellaneous



**SERIES-VARIOUS Hand shower  
FlowReduce - Brushed Dark  
Platinum**

28 029 979-99  
0010

### Required miscellaneous



**SERIES-VARIOUS Hand shower  
FlowReduce - Brushed Dark  
Platinum**

28 027 979-99  
0010

### Required miscellaneous



**Hand shower - Brushed Dark  
Platinum**

28 017 979-99

### Required miscellaneous



**Hand shower - Brushed Dark  
Platinum**

28 016 979-99

### Required miscellaneous



**Hand shower FlowReduce -  
Brushed Dark Platinum**

28 016 979-99  
0010

### Required miscellaneous



**Hand shower - Brushed Dark  
Platinum**

28 018 979-99

### Required miscellaneous



**SERIES-VARIOUS Hand shower -  
Brushed Dark Platinum**

28 029 979-99

### Required miscellaneous



**SERIES-VARIOUS Hand shower  
FlowReduce - Brushed Dark  
Platinum**

28 029 979-99  
0010

### Required miscellaneous



**SERIES-VARIOUS Hand shower  
FlowReduce - Brushed Dark  
Platinum**

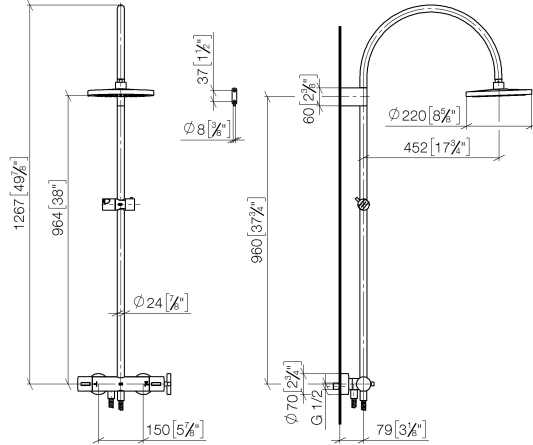
28 025 979-99  
0010

## TARA Shower pipe with shower thermostat without hand shower FlowReduce 220 mm - Brushed Dark Platinum

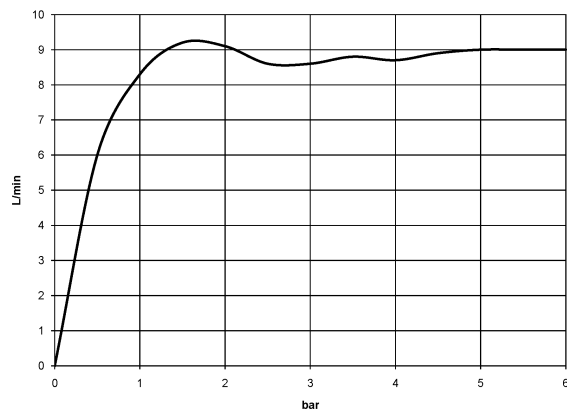
34 458 892 Product version from 5/1/2022

mm [inches]

1:10



### Flow rate chart



### Codes & Standards

DIN 4109

EN 1717

ISO 3822

Scottish Water  
Byelaws

UK Water Supply  
Regulations

Ü-Zeichen



## TARA Shower pipe with shower thermostat without hand shower FlowReduce 220 mm - Brushed Dark Platinum

---

34 458 892 Product version from 5/1/2022

### Certificates

---

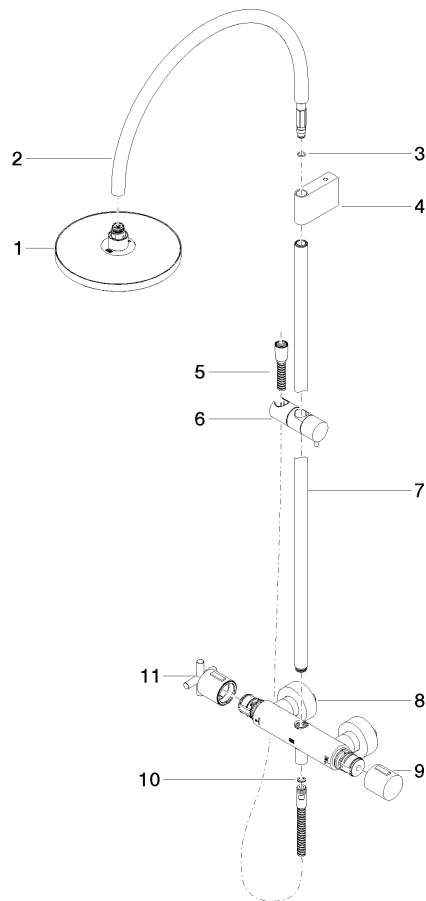
Belgaqua\_22\_283\_2 WRAS\_2204

LGA\_38

## TARA Shower pipe with shower thermostat without hand shower FlowReduce 220 mm - Brushed Dark Platinum

34 458 892 Product version from 5/1/2022

Parts for other  
finishes can be found  
here: [Chrome](#)



### Spare parts list

No.	Item Number	Name	Quantity used	Delivery time
1	90 12 05 092 20-99	shower	1	20
2	04 28 22 346 00-99	pipe	1	20
3	09 14 10 008 90	seal	1	2
4	90 17 11 150 00-99	holder	1	20
5	28 322 970-99	Metal shower hose 1/2" x 3/8" x 1750 mm - Brushed Dark Platinum	1	2
6	12 570 970-99	Slide unit - Brushed Dark Platinum	1	20
7	90 28 22 349 00-99	pipe	1	20
8	04 17 01 250 00-99	connection	1	20
9	90 17 33 015 00-99	handle	1	20
10	90 14 20 026 00 90	seal	1	2
11	90 17 33 021 00-99	handle	1	20