

Showerpipe with shower thermostat without hand shower FlowReduce 220 mm - Brushed Chrome

TARA

34 459 892



Fits: TARA, VAIA, META

- shower with fixed riser projection 452mm
- overhead shower: rain flow
- rain shower Ø 220 mm
- rain shower with anti-scale system
- max. rainshower flow 7 l/min
- rotary diverter with volume control and shut-off function
- slide-on rosettes Ø 70 mm
- height of fittings up to rain shower (bottom edge) 963mm
- height of fittings up to top edge of elbow 1267mm
- gauge 150 mm - 13 mm
- metal shower hose 1750mm with integrated anti-twist protection
- 1/2" connection
- slide bar
- Pipe diameter 23.5 mm
- quick clearing
- This product can help a building meet the requirements of Green Building Rating Systems, e.g. LEED®, BREEAM®, DGNB

This article does not include a hand shower!

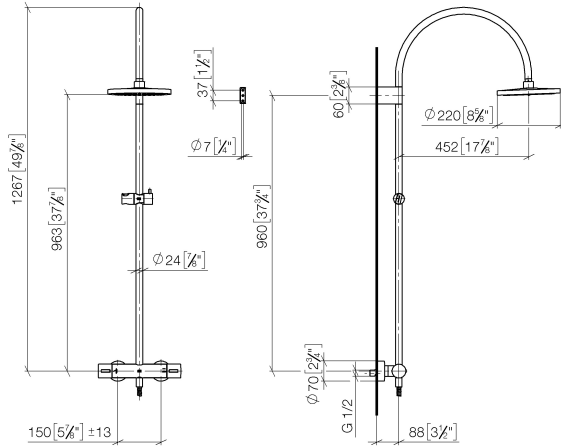
Intrinsic protection against back flow.

	Brushed Chrome	34 459 892-93
	Chrome	34 459 892-00
	Brushed Platinum	34 459 892-06
	Platinum	34 459 892-08
	Dark Chrome	34 459 892-19
	Brushed Durabronze (23kt Gold)	34 459 892-28
	Matte Black	34 459 892-33
	Brushed Champagne (22kt Gold)	34 459 892-46
	Champagne (22kt Gold)	34 459 892-47
	Brushed Dark Platinum	34 459 892-99

Showerpipe with shower thermostat without hand shower FlowReduce 220 mm - Brushed Chrome

TARA

34 459 892
mm [inches]
M 1:10



Flow rate chart



Certificates

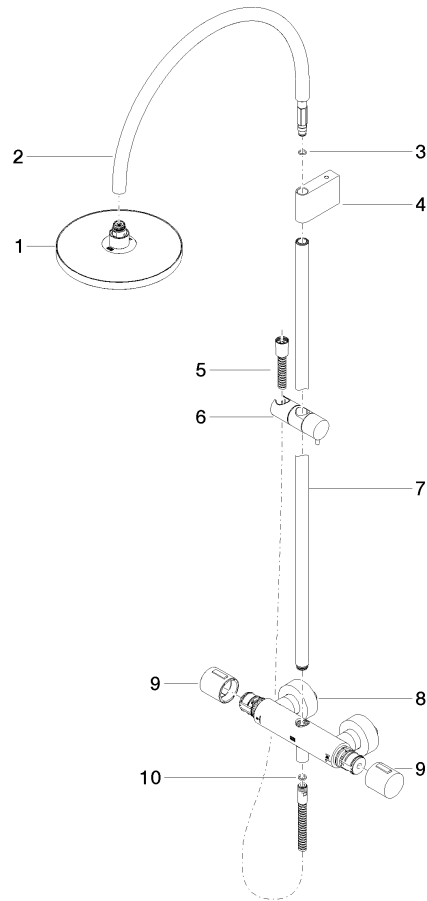
LGA_29987. Belgaqua_21-032- WRAS_2204013.
27_5.

Showerpipe with shower thermostat without hand shower FlowReduce 220 mm - Brushed Chrome

TARA

34 459 892

Parts for other
finishes can be found
here: [Chrome](#)



Spare parts list

No.	Item Number	Name	Quantity used	Delivery time
1	90 12 05 092 20-93	shower	1	20
2	04 28 22 346 00-93	pipe	1	20
3	09 14 10 008 90	seal	1	2
4	90 17 11 150 00-93	holder	1	20
5	28 322 970-93	Metal shower hose 1/2" x 3/8" x 1750 mm - Brushed Chrome	1	20
6	12 570 970-93	Slide unit - Brushed Chrome	1	20
7	90 28 22 349 00-93	pipe	1	20
8	04 17 01 250 00-93	connection	1	20
9	90 17 33 015 00-93	handle	1	20
10	90 14 20 026 00 90	seal	1	2