



- concealed rough parts
- 2x female thread 1/2" connections
- flush-mounted reflection box Ø 360 mm RAL 9003 signal white
- For simultaneous control of the jet types, we recommend the xTool thermostat module

Separate LED power supply

Input LED power supply

- Electricity supply: 100-240 V AC, 50-60 Hz, 20 W

Output LED power supply

- 12V DC (CV)

Output specification LED power supply

- SELV (Safety Extra Low Voltage)
- Class 2

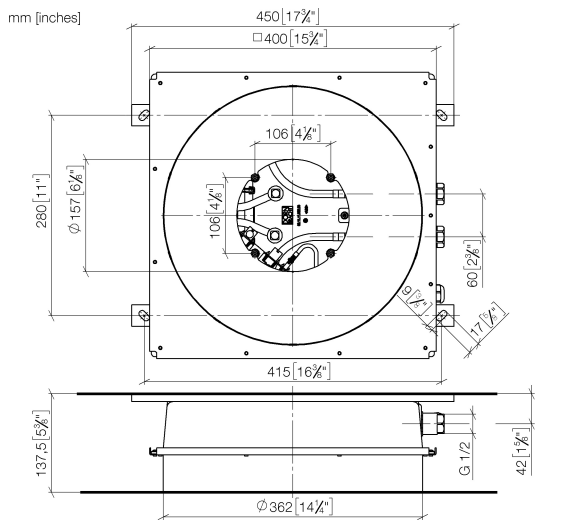
Ceiling module power supply

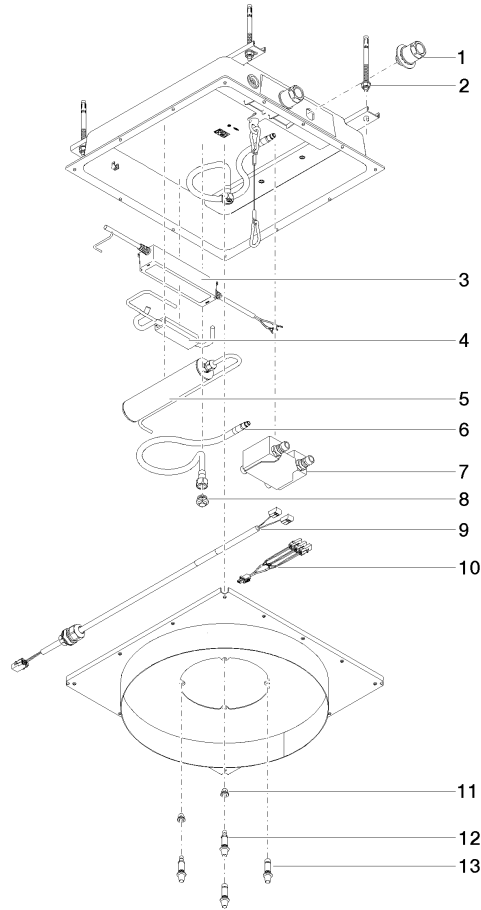
- 12V DC (CV)
- Supply pipe 7 m

Activation

- ZigBee Light Link RGBW controller
- Provided by customer: Zigbee gateway
- Not suitable for outdoor use.
- Not suitable for use in a steam room.
- Not suitable for use in chlorinated or salty environments.
- Comply with the protection zone regulations as defined in DIN VDE 0100, Part 701 (IEC 60364-7-701).
- Dornbracht recommends consulting a systems integrator.
- WRAS

Pre-assembly kit for three-way diverter included





Spare parts list

| No. | Item Number | Name | Quantity used | Delivery time |
|-----|--------------------|------------------------|---------------|---------------|
| 13 | 90 30 01 215 00 90 | fixing set | 2.00 | 2 |
| 12 | 90 30 01 215 01 90 | fixing set | 2.00 | 2 |
| 4 | 90 10 01 214 00 90 | electronic accessories | 1.00 | 2 |
| 5 | 90 10 01 211 00 90 | electronic accessories | 2.00 | 2 |
| 6 | 04 30 04 097 00 90 | hose | 2.00 | 60 |
| 2 | 04 30 35 008 00 90 | fixing set | 1.00 | 2 |
| 1 | 90 24 03 305 00 90 | fixing set | 2.00 | 2 |
| 9 | 90 10 01 228 00 90 | electronic accessories | 1.00 | 2 |
| 7 | 90 30 01 216 10 90 | Venting service kit | 1.00 | 2 |
| 8 | 09 31 20 042 90 | plug | 2.00 | 2 |
| 10 | 90 10 01 229 00 90 | electronic accessories | 1.00 | 2 |
| 11 | 90 14 03 189 00 90 | plug | 1.00 | 2 |
| 3 | 90 10 01 212 00 90 | electronic accessories | 1.00 | 2 |