

35 050 970 90



- red brass, lead-free
- 2x female thread 1/2" connections
- dust cover
- anti-water packing
- soundproofing
- WRAS

Recommended miscellaneous

	Extension 25 mm -	12 055 970 90

Recommended miscellaneous

	Rosette - Chrome	12 720 660-00
	•with round rosette	

Recommended miscellaneous

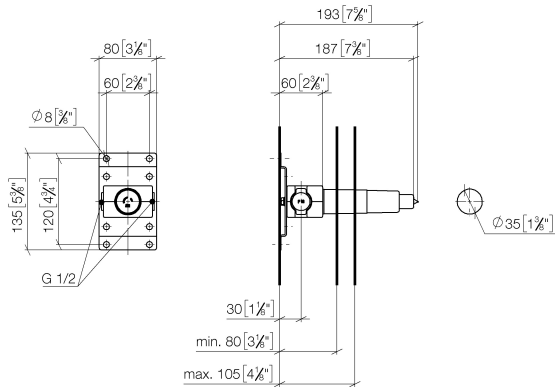
	Rosette - Chrome	12 720 980-00
	•with angular rosette	

Concealed wall mounting -

SERIES-VARIOUS

35 050 970 90

mm [inches]



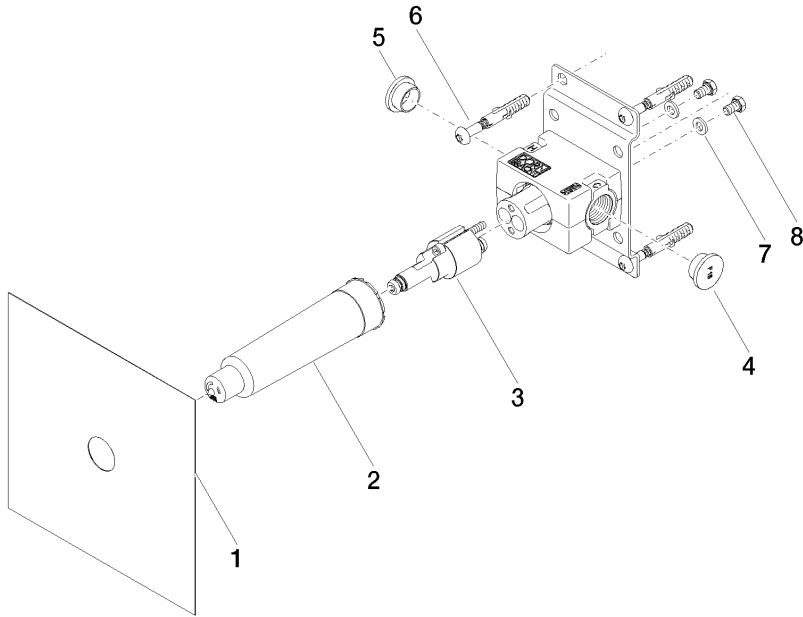
Codes & Standards

EN 817	Scottish Water Byelaws	UK Water Supply Regulations
--------	------------------------	-----------------------------

Certificates and sustainability

DVGW_DW- WRAS_2101 WRAS_2011
6512DN0

35 050 970 90



Spare parts list

No.	Item Number	Name	Quantity used	Delivery time
2	09 21 02 173 90	cap	1.00	2
7	09 30 11 144 90	disc	2.00	2
6	04 30 31 024 01 90	fixing set	2.00	2
3	90 31 20 116 00 90	plug	1.00	2
4	09 31 20 094 90	plug	1.00	2
5	09 31 20 093 90	plug	1.00	2
8	09 30 30 049 90	screw	2.00	2
1	04 14 03 072 01 90	gasket kit	1.00	2