



- red brass, lead-free
- female thread 1/2" connection
- 1x female thread 1/2" outlet
- dust cover
- anti-water packing
- soundproofing
- WRAS

For wall-mounted spouts and wall outlet elbows with 1/2" connection.

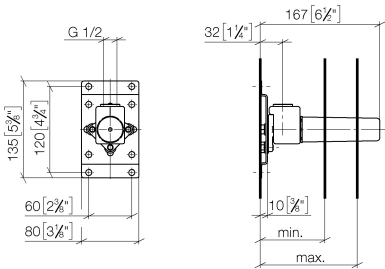
Concealed wall elbow -

SERIES-VARIOUS

35 085 970 90

Product version from 3/7/2023

mm [inches]



	min	max
CL. 1	90 [3 1/2"]	163 [6 3/8"]
CL. 2	68 [2 5/8"]	135 [5 3/8"]
Domicil	90 [3 1/2"]	163 [6 3/8"]
Gentle	90 [3 1/2"]	163 [6 3/8"]
IMO	90 [3 1/2"]	163 [6 3/8"]
Lissé	90 [3 1/2"]	163 [6 3/8"]
MEM	90 [3 1/2"]	163 [6 3/8"]
Symetrics	90 [3 1/2"]	163 [6 3/8"]
Vaia	90 [3 1/2"]	163 [6 3/8"]

Codes & Standards

DIN 4109

ISO 3822

Scottish Water Byelaws

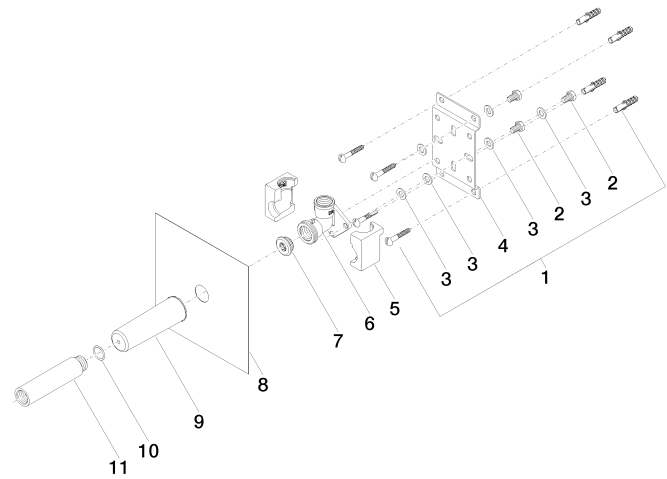
UK Water Supply Regulations

Ü-Zeichen

Certificates and sustainability

LGA_29

WRAS_240502



Spare parts list

No.	Item Number	Name	Quantity used	Delivery time
9	09 21 02 102 90	cap	1.00	2
5	09 11 11 036 90	accessories	1.00	2
2	09 30 30 152 90	screw	3.00	2
4	09 17 20 094 90	holder	1.00	2
1	04 30 31 024 01 90	fixing set	2.00	2
3	09 30 11 139 90	disc	6.00	2
6	09 11 03 041 10 90	connection	1.00	2
11	09 24 03 169 10 90	adaptor	1.00	2
7	04 31 20 006 00 90	plug	1.00	2
8	04 14 03 072 01 90	gasket kit	1.00	2
10	90 14 10 010 00 90	seal	1.00	2