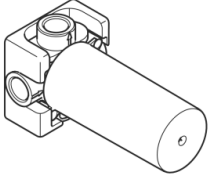


Concealed two-way diverter -

35 124 970 90 Product version from 5/15/2020

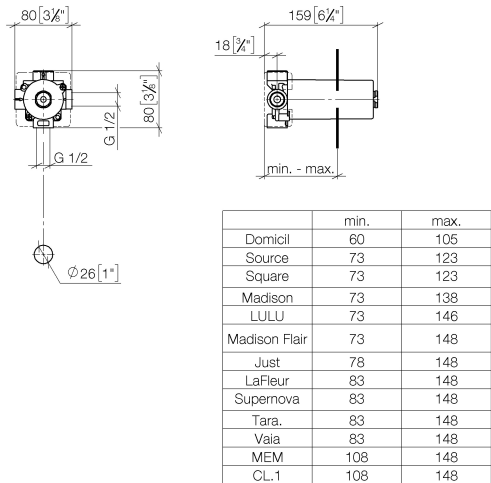


- red brass, lead-free
- 2x female thread 1/2" connections
- 2x female thread 1/2" outlet
- cut-to-length spindle and sleeve
- dust cover
- anti-water packing
- soundproofing

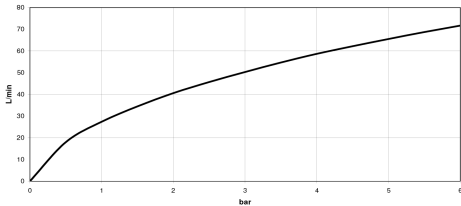
Concealed two-way diverter -

35 124 970 90 Product version from 5/15/2020

mm [inches]



Flow rate chart



Codes & Standards

DIN 4109

ISO 3822

Ü-Zeichen



Concealed two-way diverter -

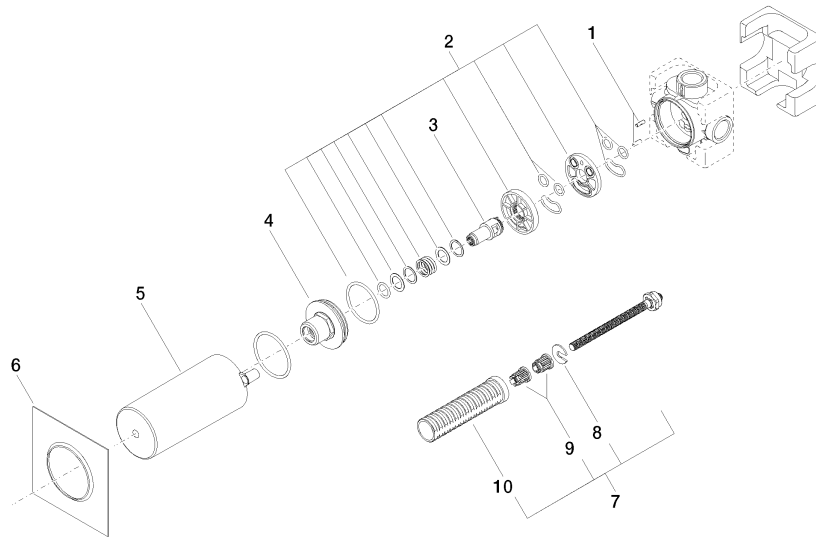
35 124 970 90 Product version from 5/15/2020

Certificates

LGA_28

Concealed two-way diverter -

35 124 970 90 Product version from 5/15/2020



Spare parts list

No.	Item Number	Name	Quantity used	Delivery time
1	09 31 11 151 90	pin	2	2
2	90 30 11 085 00 90	set	1	2
3	09 29 06 025 90	spindle	1	2
4	09 21 02 124 90	lid	1	2
5	09 21 02 125 90	cap	1	2
6	09 14 03 109 90	seal	1	2
7	90 18 40 077 00 90	spindle	1	2
8	09 16 01 026 90	ring	1	2
9	90 12 12 002 00 90	fixing cap	2	2
10	90 18 40 077 01 90	spindle	1	2