

eSET Touchfree Basin mixer with temperature setting for combining with wall-mounted fittings - SERIES-VARIOUS

35 741 970 90 Product version from 7/3/2017



- lead-free
- 2x male thread 1/2" connection
- 2x back flow preventer
- 2x integrated supply stop
- concealed installation
- min. recess depth 90 mm
- max. recess depth 125 mm
- WRAS

Can be combined with spouts from the Vaia, Lissé, CL.1, IMO, Tara., Tara Logic, Meta.02, Deque, Supernova, Symetrics, LULU and MEM series

Cannot be combined with spouts with a pull-rod pop-up waste.

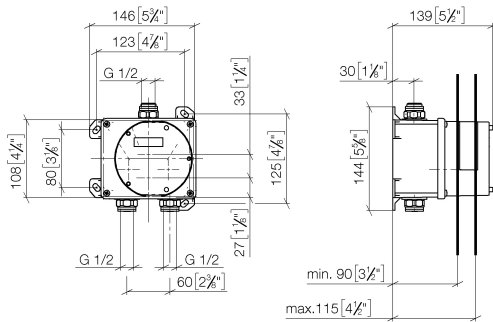
Please combine with item no. 10 126 970-FF

Other series and finishes on request (x-TRA SERVICE)

ATTENTION: Separate terms and conditions for electronic articles are applicable.

eSET Touchfree Basin mixer with temperature setting for combining with wall-mounted fittings - SERIES-VARIOUS

35 741 970 90 Product version from 7/3/2017
mm [inches]



Codes & Standards

| | | | |
|-----------------------------|-----------|----------|------------------------|
| DIN 4109 | EN 1717 | ISO 3822 | Scottish Water Byelaws |
| UK Water Supply Regulations | Ü-Zeichen | | |

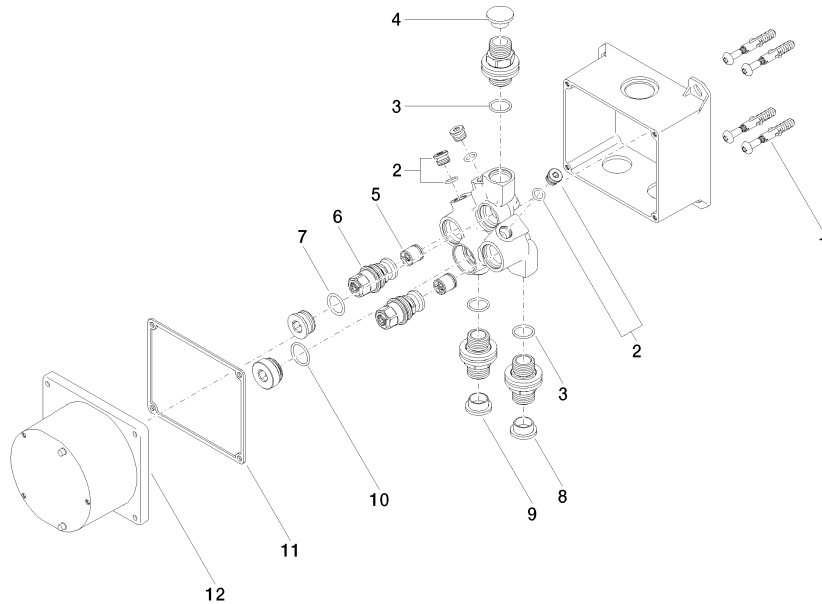
Certificates and sustainability

Belgaqua_23-210-2 LGA_29 WRAS_250302

eSET Touchfree Basin mixer with temperature setting for combining with wall-mounted fittings -

SERIES-VARIOUS

35 741 970 90 Product version from 7/3/2017



Spare parts list

| No. | Item Number | Name | Quantity used | Delivery time |
|-----|--------------------|---------------------|---------------|---------------|
| 8 | 09 31 20 094 90 | plug | 1.00 | 2 |
| 4 | 09 31 20 092 90 | plug | 1.00 | 2 |
| 11 | 09 14 03 103 90 | seal | 1.00 | 2 |
| 6 | 04 29 05 031 01 90 | insert | 2.00 | 2 |
| 9 | 09 31 20 093 90 | plug | 1.00 | 2 |
| 1 | 04 30 31 024 01 90 | fixing set | 2.00 | 2 |
| 5 | 90 23 01 040 00 90 | back-flow preventer | 2.00 | 2 |
| 7 | 09 14 10 117 90 | seal | 1.00 | 2 |
| 12 | 09 11 11 011 90 | lid | 1.00 | 2 |
| 10 | 09 14 10 031 90 | seal | 1.00 | 2 |
| 2 | 04 31 20 039 11 90 | plug | 3.00 | 2 |
| 3 | 90 14 10 010 00 90 | seal | 3.00 | 2 |