

VAIA Concealed two-way diverter - Chrome

VAIA

36 200 809 Product version from 4/1/2022



- rotary diverter
- rosette Ø 60 mm
- WRAS

| | | |
|---|-------------------------------|---------------|
|  | Chrome | 36 200 809-00 |
|  | Brushed Platinum | 36 200 809-06 |
|  | Dark Chrome | 36 200 809-19 |
|  | Brushed Durabrass (23kt Gold) | 36 200 809-28 |
|  | Brushed Dark Brass | 36 200 809-39 |
|  | Brushed Bronze | 36 200 809-42 |
|  | Brushed Champagne (22kt Gold) | 36 200 809-46 |
|  | Champagne (22kt Gold) | 36 200 809-47 |
|  | Brushed Dark Platinum | 36 200 809-99 |

Required miscellaneous



- Concealed two-way diverter -

•max. recess depth 160 mm

•min. recess depth 85 mm

35 202 970 90

mm [inches]



Flow rate chart



Codes & Standards

DIN 4109

ISO 3822

Scottish Water
Byelaws

UK Water Supply
Regulations

Ü-Zeichen



VAIA Concealed two-way diverter - Chrome

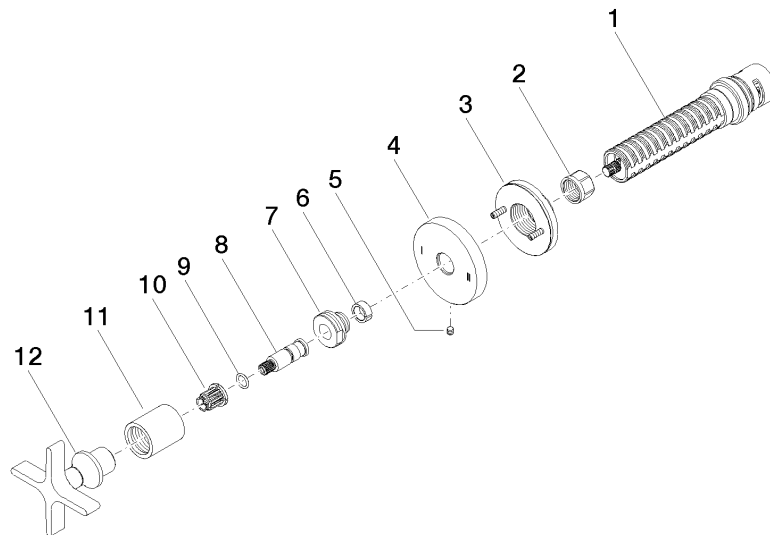
VAIA

36 200 809 Product version from 4/1/2022

Certificates and sustainability

LGA_38

WRAS_2307



Spare parts list

| No. | Item Number | Name | Quantity used | Delivery time |
|-----|--------------------|------------|---------------|---------------|
| 1 | 90 90 03 304 10 90 | diverter | 1.00 | 2 |
| 7 | 09 24 05 002 90 | nipple | 1.00 | 2 |
| 5 | 09 31 11 294 90 | pin | 1.00 | 2 |
| 11 | 09 21 02 070-00 | cover | 1.00 | 10 |
| 8 | 09 29 06 022 90 | spindle | 1.00 | 2 |
| 12 | 90 20 80 014 01-00 | handle | 1.00 | 10 |
| 3 | 90 21 02 181 00 90 | disc | 1.00 | 2 |
| 4 | 09 27 89 118-00 | rosette | 1.00 | 10 |
| 10 | 90 12 12 002 00 90 | fixing cap | 1.00 | 2 |
| 9 | 90 14 10 060 00 90 | seal | 1.00 | 2 |
| 6 | 90 14 15 020 03 90 | ring | 1.00 | 2 |
| 2 | 90 23 30 023 00 90 | nut | 1.00 | 2 |