








MADISON Concealed three-way diverter - Durabrand (23kt Gold)

MADISON


36 210 361



- rotary diverter
- rosette Ø 60 mm
- NEUTRAL porcelain insert
- WRAS 2307045

	Durabrand (23kt Gold)	36 210 361-09
	Chrome	36 210 361-00
	Brushed Platinum	36 210 361-06
	Platinum	36 210 361-08
	Brushed Durabrand (23kt Gold)	36 210 361-28
	Brushed Dark Platinum	36 210 361-99

Required miscellaneous



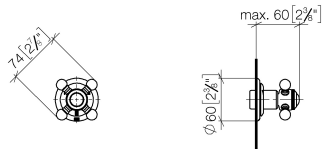
Concealed three-way diverter -

- max. recess depth 155 mm
- min. recess depth 85 mm

35 203 970 90

36 210 361

mm [inches]



Flow rate chart



Codes & Standards

DIN 4109

ISO 3822

Scottish Water
Byelaws

UK Water Supply
Regulations

Ü-Zeichen



MADISON Concealed three-way diverter - Durabross (23kt Gold)

MADISON

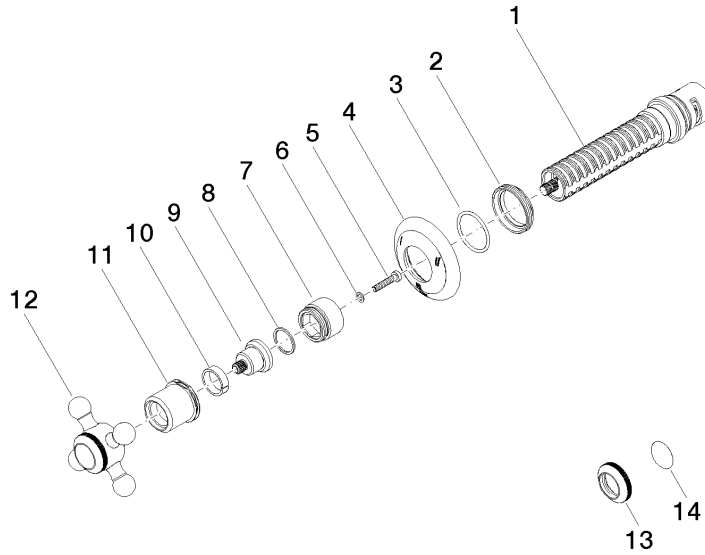
36 210 361

Certificates

WRAS_2307

LGA_38

Product version from 4/1/2022





MADISON Concealed three-way diverter - Durabrass (23kt Gold)

MADISON

36 210 361

Spare parts list

Product version from 4/1/2022

No.	Item Number	Name	Quantity used	Delivery time
	90 90 03 303 10 90	diverter	14	2