

## Bath spout with pop-up waste and overflow - Chrome

IMO

36 247 970



Fits: IMO, LULU, MADISON, MEM, TARA, CL.1, LISSÉ, VAIA, META, CYO

- drain Ø 52mm
- max. flow 27.8 l/min at 3 bar flow pressure

**Also suitable for king-size baths.**

**In combination with 35 021 970 90 concealed single-lever mixer, is intrinsically safe under DIN EN 1717. Alternatively, ensure protection with vacuum breaker 35 150 970 90.**

Also suitable for king-size baths.

In combination with 35 021 970 90 concealed single-lever mixer, is intrinsically safe under DIN EN 1717. Alternatively, ensure protection with vacuum breaker 35 150 970 90.

	Chrome	36 247 970-00
	Brushed Platinum	36 247 970-06
	Platinum	36 247 970-08
	Durabrand (23kt Gold)	36 247 970-09
	Dark Chrome	36 247 970-19
	Light Gold	36 247 970-26
	Brushed Light Gold	36 247 970-27
	Brushed Durabrand (23kt Gold)	36 247 970-28
	Matte Black	36 247 970-33
	Brushed Bronze	36 247 970-42
	Brushed Champagne (22kt Gold)	36 247 970-46
	Champagne (22kt Gold)	36 247 970-47
	Brushed Chrome	36 247 970-93
	Brushed Dark Platinum	36 247 970-99

### Required miscellaneous



**Vacuum breaker -**  
• 3/4" connection

35 150 970 90

### Required miscellaneous

**Vacuum breaker - Chrome**

36 150 970-00



### Required miscellaneous



**Bath spout with pop-up waste and overflow -**

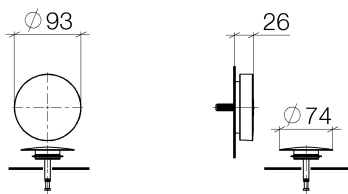
- bowden cable length 725 mm

35 248 970 90

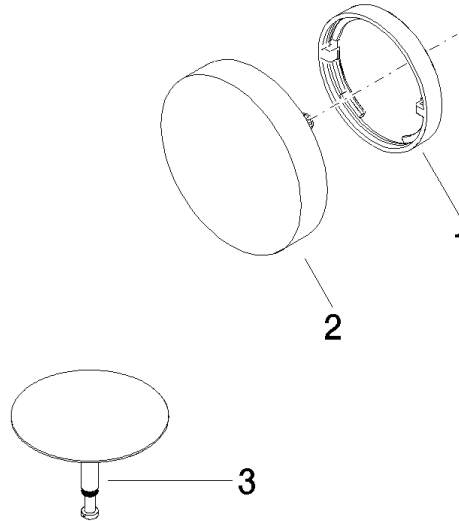
## Bath spout with pop-up waste and overflow - Chrome

IMO

36 247 970



**Product version from 3/13/2017**





## Bath spout with pop-up waste and overflow - Chrome

IMO

36 247 970

### Spare parts list

#### Product version from 3/13/2017

No.	Item Number	Name	Quantity used	Delivery time
	09 11 01 124-00	cover	3	10