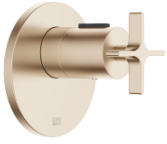








VAIA xTOOL Concealed thermostat without volume control 3/4" - Brushed Champagne (22kt Gold)

VAIA

36 503 809 Product version from 4/1/2025



- cover plate Ø 123 mm
- temperature control handle with safety limit stop at 38°C
- thermostat cartridge
- WRAS

| | | |
|--|--------------------------------|---------------|
|  | Brushed Champagne (22kt Gold) | 36 503 809-46 |
|  | Chrome | 36 503 809-00 |
|  | Brushed Platinum | 36 503 809-06 |
|  | Platinum | 36 503 809-08 |
|  | Dark Chrome | 36 503 809-19 |
|  | Brushed Durabronze (23kt Gold) | 36 503 809-28 |
|  | Brushed Dark Brass | 36 503 809-39 |
|  | Brushed Bronze | 36 503 809-42 |
|  | Champagne (22kt Gold) | 36 503 809-47 |
|  | Brushed Dark Platinum | 36 503 809-99 |

Required miscellaneous



xTOOL Concealed thermostat module without volume control - 35 503 970 90
 • max. recess depth 110 mm
 • min. recess depth 85 mm

Recommended miscellaneous



xGRID Attachment set for integrating in the dry wall construction - 12 340 970 90

Required miscellaneous

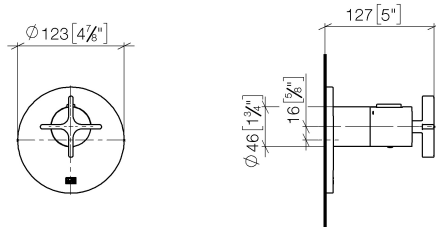


xGRID Installation track 555 mm - 12 360 970 90

VAIA xTOOL Concealed thermostat without volume control 3/4" - Brushed Champagne (22kt Gold)

VAIA

36 503 809 Product version from 4/1/2025
mm [inches]



Flow rate chart



Codes & Standards

DIN 4109

ISO 3822

Scottish Water
Byelaws

UK Water Supply
Regulations

Ü-Zeichen



VAIA xTOOL Concealed thermostat without volume control 3/4" - Brushed
Champagne (22kt Gold)

VAIA

36 503 809 Product version from 4/1/2025

Certificates and sustainability

| | | | |
|-----------|--------|--------|--------|
| WRAS_2011 | LGA_29 | LGA_29 | LGA_29 |
|-----------|--------|--------|--------|



Spare parts list

| No. | Item Number | Name | Quantity used | Delivery time |
|-----|--------------------|-------------------|---------------|---------------|
| 6 | 90 21 02 112 00-46 | sleeve | 1.00 | 30 |
| 3 | 09 11 02 537-46 | cover | 1.00 | 30 |
| 7 | 90 17 33 029 00-46 | handle | 1.00 | 30 |
| 4 | 09 31 11 048 90 | pin | 1.00 | 2 |
| 1 | 90 15 02 063 00 90 | cartridge | 1.00 | 2 |
| 5 | 90 14 10 049 00 90 | seal | 1.00 | 2 |
| 8 | 12 178 970 90 | Extension 46 mm - | 1.00 | 2 |
| 2 | 90 11 01 196 00 90 | base | 1.00 | 2 |