

TARA xTOOL Concealed thermostat without volume control 3/4" - Brushed Durabrand (23kt Gold)

TARA

36 503 892



- cover plate Ø 123 mm
- temperature control handle with safety limit stop at 38°C
- thermostat cartridge

| | | |
|--|-------------------------------|---------------|
| | Brushed Durabrand (23kt Gold) | 36 503 892-28 |
| | Chrome | 36 503 892-00 |
| | Brushed Platinum | 36 503 892-06 |
| | Platinum | 36 503 892-08 |
| | Dark Chrome | 36 503 892-19 |
| | Matte Black | 36 503 892-33 |
| | Brushed Champagne (22kt Gold) | 36 503 892-46 |
| | Champagne (22kt Gold) | 36 503 892-47 |
| | Brushed Chrome | 36 503 892-93 |
| | Brushed Dark Platinum | 36 503 892-99 |

Required miscellaneous



xTOOL Concealed thermostat module without volume control - 35 503 970 90
 • max. recess depth 160 mm
 • min. recess depth 95 mm

Recommended miscellaneous



xGRID Attachment set for integrating in the dry wall construction - 12 340 970 90

Required miscellaneous

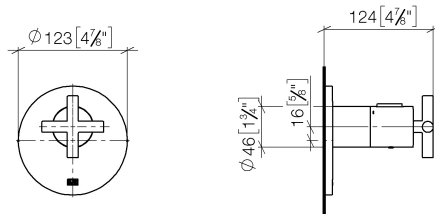


xGRID Installation track 555 mm - 12 360 970 90

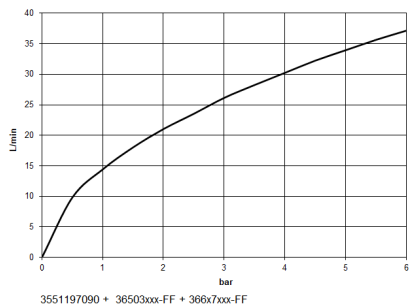
TARA xTOOL Concealed thermostat without volume control 3/4" - Brushed Durabronz (23kt Gold)

TARA

36 503 892
mm [inches]



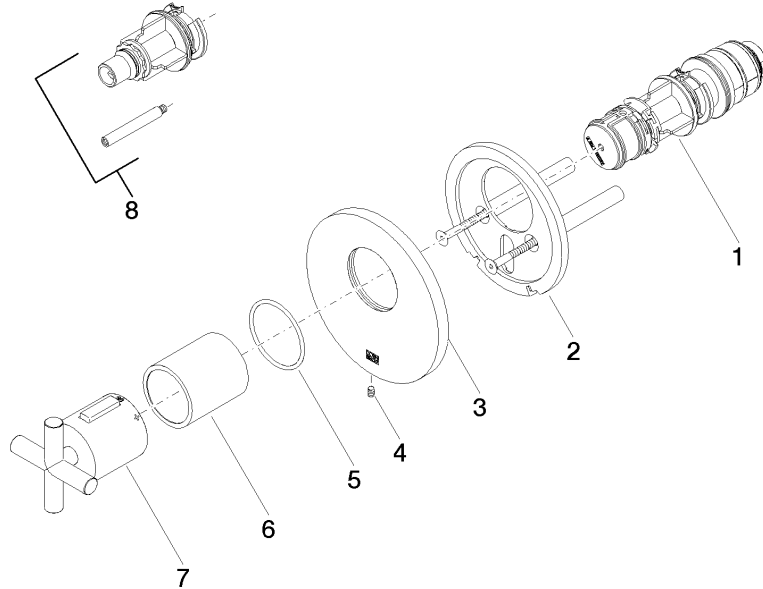
Flow rate chart



Certificates

WRAS_2011026. LGA_29931. LGA_29930. LGA_29932.

36 503 892



Spare parts list

| No. | Item Number | Name | Quantity used | Delivery time |
|-----|--------------------|-------------------|---------------|---------------|
| 1 | 90 15 02 065 00 90 | cartridge | 1 | 2 |
| 2 | 90 11 01 196 00 90 | base | 1 | 2 |
| 3 | 09 11 02 537-28 | cover | 1 | 20 |
| 4 | 09 31 11 048 90 | pin | 1 | 2 |
| 5 | 90 14 10 049 00 90 | seal | 1 | 2 |
| 6 | 90 21 02 112 00-28 | sleeve | 1 | 20 |
| 7 | 90 17 33 027 00-28 | handle | 1 | 20 |
| 8 | 12 178 970 90 | Extension 46 mm - | 1 | 2 |