









MADISON xTOOL Concealed thermostat without volume control 3/4" - Durabrand (23kt Gold)
MADISON


36 503 977
Product version up to 1/1/2022



- cover plate Ø 124 mm
- temperature control handle with safety limit stop at 38°C
- thermostat cartridge
- WRAS

	Durabrand (23kt Gold)	36 503 977-09
	Chrome	36 503 977-00
	Brushed Platinum	36 503 977-06
	Platinum	36 503 977-08
	Brushed Durabrand (23kt Gold)	36 503 977-28
	Brushed Dark Brass	36 503 977-39
	Brushed Dark Platinum	36 503 977-99


Required miscellaneous



xTOOL Concealed thermostat module without volume control -
35 503 970 90


- max. recess depth 110 mm
- min. recess depth 85 mm

Required miscellaneous



xGRID Installation track 555 mm -
12 360 970 90

Recommended miscellaneous

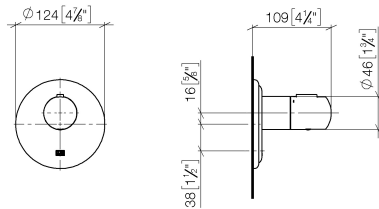


xGRID Attachment set for integrating in the dry wall construction -
12 340 970 90

MADISON xTOOL Concealed thermostat without volume control 3/4" - Durabron (23kt Gold)

MADISON

36 503 977 Product version up to 1/1/2022
mm [inches]



Flow rate chart



Codes & Standards

DIN 4109

EN 1111

ISO 3822

Scottish Water
Byelaws

UK Water Supply
Regulations

Ü-Zeichen



MADISON xTOOL Concealed thermostat without volume control 3/4" -
Durabrass (23kt Gold)

MADISON

36 503 977 Product version up to 1/1/2022

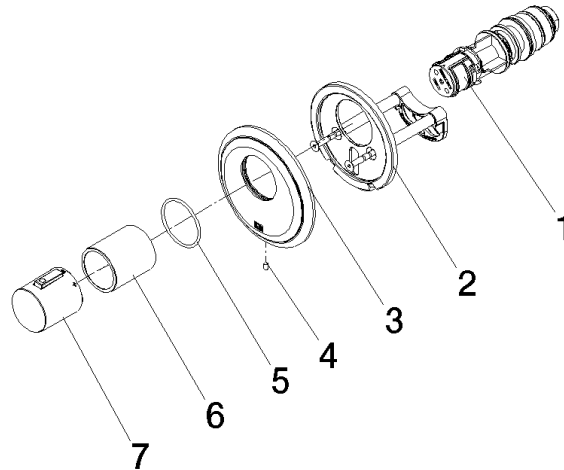
Certificates and sustainability

WRAS_2011	DVGW_DW- 6512DN0	LGA_29	LGA_29
-----------	---------------------	--------	--------

**MADISON xTOOL Concealed thermostat without volume control 3/4" -
Durabronz (23kt Gold)**

MADISON

36 503 977 Product version up to 1/1/2022



Spare parts list

No.	Item Number	Name	Quantity used	Delivery time
2	90 11 01 196 00 90	base	1.00	2
4	09 31 11 048 90	pin	1.00	2
3	09 11 02 543-09	cover	1.00	40
7	90 17 33 005 01-09	handle	1.00	40
6	90 21 02 112 00-09	sleeve	1.00	40
5	90 14 10 049 00 90	seal	1.00	2
1	90 15 02 063 00 90	cartridge	1.00	2