

WATER FAN vertical Concealed body spray - Brushed Bronze

IMO

36 513 979



- AQUAPRESSURE FLOW, max. flow rate 10 l/min (at 3 bar)
- water jet adjustable
- cover plate 240 x 60 mm
- 1/2" connection
- WRAS 2005003

Fits: IMO, LULU, MADISON, MEM, TARA, CL.1, LISSÉ, VAIA, META, CYO

| | | |
|--------------------------------------------------------------------------------------|--------------------------------|---------------|
|  | Brushed Bronze | 36 513 979-42 |
|  | Chrome | 36 513 979-00 |
|  | Brushed Platinum | 36 513 979-06 |
|  | Platinum | 36 513 979-08 |
|  | Dark Chrome | 36 513 979-19 |
|  | Light Gold | 36 513 979-26 |
|  | Brushed Light Gold | 36 513 979-27 |
|  | Brushed Durabronze (23kt Gold) | 36 513 979-28 |
|  | Matte Black | 36 513 979-33 |
|  | Brushed Champagne (22kt Gold) | 36 513 979-46 |
|  | Champagne (22kt Gold) | 36 513 979-47 |
|  | Brushed Chrome | 36 513 979-93 |
|  | Brushed Dark Platinum | 36 513 979-99 |

Required miscellaneous



- Concealed wall installation box -** 35 206 970 90
- min. recess depth 100 mm
 - max. recess depth 173 mm

Recommended miscellaneous



- xGRID Attachment set for integrating in the dry wall construction -** 12 340 970 90

Required miscellaneous



- xGRID Installation track 555 mm -** 12 360 970 90

36 513 979

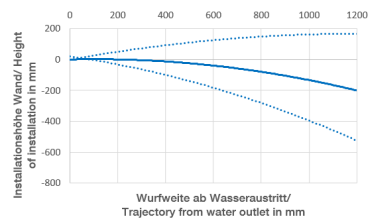
mm [inches]



Flow rate chart



Trajectory diagram



Codes & Standards

DIN 4109

ISO 3822

Ü-Zeichen



WATER FAN vertical Concealed body spray - Brushed Bronze

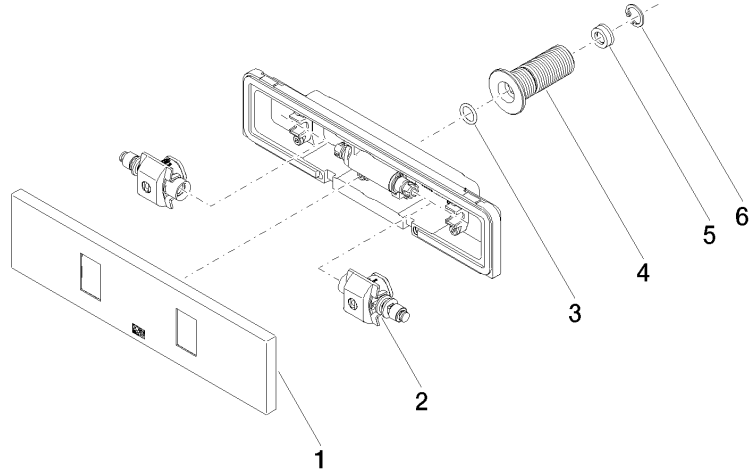
IMO

36 513 979

Certificates

LGA_29

Product version from 4/1/2024





WATER FAN vertical Concealed body spray - Brushed Bronze

IMO

36 513 979

Spare parts list

Product version from 4/1/2024

| No. | Item Number | Name | Quantity used | Delivery time |
|-----|--------------------|--------|---------------|---------------|
| | 90 27 99 002 00-42 | insert | 6 | 30 |