

WATER CURVE Concealed body spray - Champagne (22kt Gold)

SERIES-VARIOUS

36 514 979 Product version from 4/1/2024



- AQUAPRESSURE FLOW, max. flow rate 10 l/min (at 3 bar)
- water jet adjustable
- Function from: l/min

Technical data:

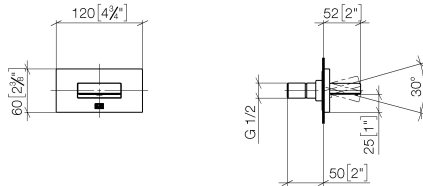
- cover plate 120 x 60 mm
- 1/2" connection

| | | |
|--|--------------------------------|---------------|
| | Champagne (22kt Gold) | 36 514 979-47 |
| | Chrome | 36 514 979-00 |
| | Brushed Platinum | 36 514 979-06 |
| | Platinum | 36 514 979-08 |
| | Dark Chrome | 36 514 979-19 |
| | Light Gold | 36 514 979-26 |
| | Brushed Light Gold | 36 514 979-27 |
| | Brushed Durabronze (23kt Gold) | 36 514 979-28 |
| | Matte Black | 36 514 979-33 |
| | Brushed Dark Brass | 36 514 979-39 |
| | Brushed Bronze | 36 514 979-42 |
| | Brushed Champagne (22kt Gold) | 36 514 979-46 |
| | Brushed Chrome | 36 514 979-93 |
| | Brushed Dark Platinum | 36 514 979-99 |

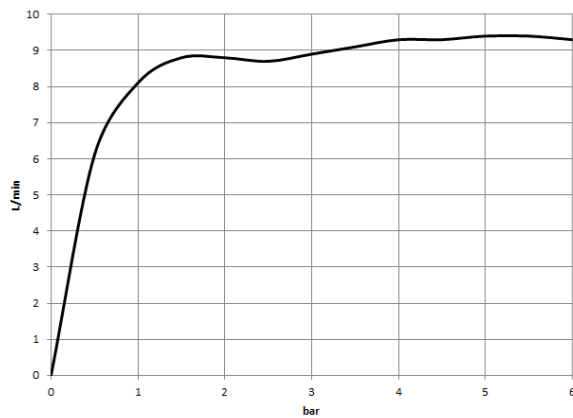
Recommended miscellaneous

- Concealed wall elbow -** 35 085 970 90
- max. recess depth 163 mm
 - min. recess depth 90 mm

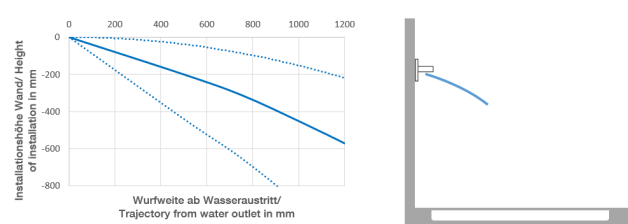




Flow rate chart



Trajectory diagram



Codes & Standards

DIN 4109

ISO 3822

Scottish Water
Byelaws

UK Water Supply
Regulations

Ü-Zeichen



WATER CURVE Concealed body spray - Champagne (22kt Gold)

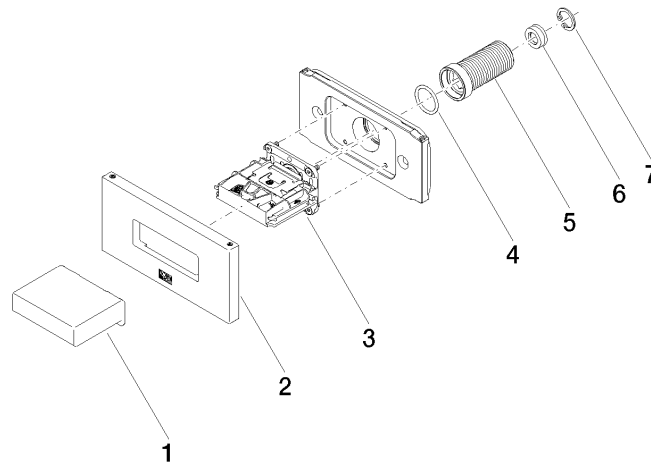
SERIES-VARIOUS

36 514 979 Product version from 4/1/2024

Certificates and sustainability

LGA_29

WRAS_250602



Spare parts list

| No. | Item Number | Name | Quantity used | Delivery time |
|-----|--------------------|--------------|---------------|---------------|
| 3 | 90 29 03 088 00 90 | insert | 1.00 | 2 |
| 1 | 09 17 01 230-47 | casing | 1.00 | 30 |
| 2 | 90 27 97 041 00-47 | rosette | 1.00 | 30 |
| 6 | 09 23 01 134 90 | flow reducer | 1.00 | 2 |
| 7 | 09 16 01 014 90 | ring | 1.00 | 2 |
| 5 | 09 24 04 336 90 | nipple | 1.00 | 2 |
| 4 | 90 14 10 010 00 90 | seal | 1.00 | 2 |