

WATER POINTS Concealed body spray FlowReduce - Brushed Chrome

IMO

36 515 979



- HORIZONTAL RAIN, max. flow rate 6 l/min (at 3 bar)
- with anti-scale system
- cover plate 120 x 120 mm
- This product can help a building meet the requirements of Green Building Rating Systems, e.g. LEED®, BREEAM®, DGNB
- WRAS 1304001

Flow restrictor (8.3 l/min) to extend shower jet from approx. 500 mm to approx. 1000 mm

Fits: IMO, LULU, MADISON, MEM, TARA, CL.1, LISSÉ, VAIA, META, CYO

| | | |
|--|--------------------------------|---------------|
|  | Brushed Chrome | 36 515 979-93 |
|  | Chrome | 36 515 979-00 |
|  | Brushed Platinum | 36 515 979-06 |
|  | Platinum | 36 515 979-08 |
|  | Dark Chrome | 36 515 979-19 |
|  | Light Gold | 36 515 979-26 |
|  | Brushed Light Gold | 36 515 979-27 |
|  | Brushed Durabronze (23kt Gold) | 36 515 979-28 |
|  | Matte Black | 36 515 979-33 |
|  | Brushed Bronze | 36 515 979-42 |
|  | Brushed Champagne (22kt Gold) | 36 515 979-46 |
|  | Champagne (22kt Gold) | 36 515 979-47 |
|  | Brushed Dark Platinum | 36 515 979-99 |

36 515 979

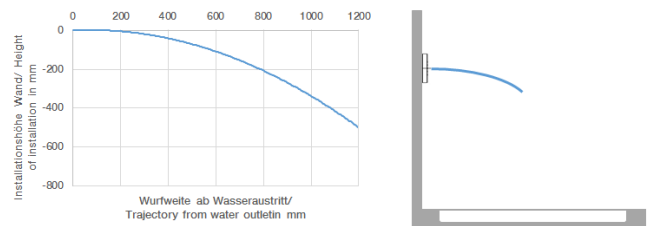
mm [inches]



Flow rate chart



Trajectory diagram



Codes & Standards

ASME A112.18.1

cUPC

DIN 4109

ISO 3822

Scottish Water
Byelaws

UK Water Supply
Regulations

Ü-Zeichen



WATER POINTS Concealed body spray FlowReduce - Brushed Chrome

IMO

36 515 979

Certificates

IAPMO_4976

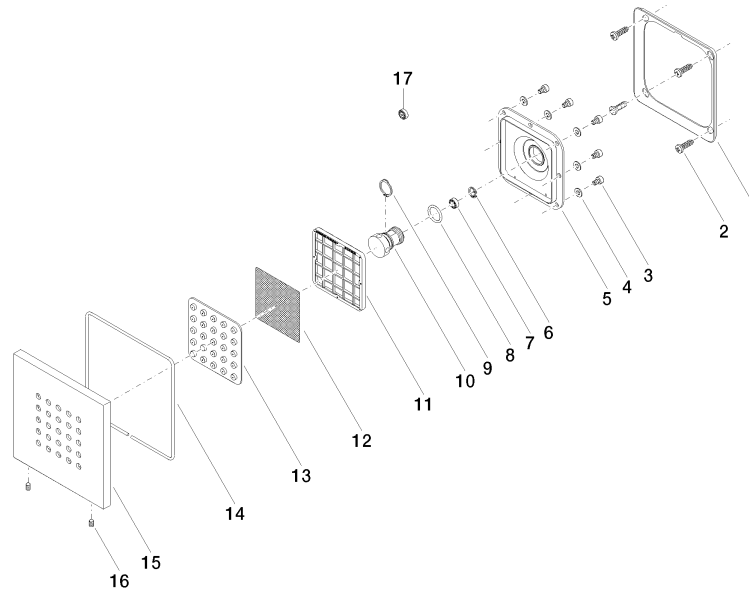
WRAS_1304

LGA_18

36 515 979

Product version from 4/1/2024

Parts for other
finishes can be found
here: [Chrome](#)





WATER POINTS Concealed body spray FlowReduce - Brushed Chrome

IMO

36 515 979

Spare parts list

Product version from 4/1/2024

| No. | Item Number | Name | Quantity used | Delivery time |
|-----|-----------------|--------|---------------|---------------|
| | 09 28 01 024 90 | holder | 34 | 2 |