

WATER POINTS Concealed body spray - Brushed Platinum

IMO

36 525 979



- HORIZONTAL RAIN, max. flow rate 9 l/min (at 3 bar)
- with anti-scale system
- cover plate 120 x 120 mm

Fits: IMO, LULU, MADISON, MEM, TARA, CL.1, LISSÉ, VAIA, META, CYO

	Brushed Platinum	36 525 979-06
	Chrome	36 525 979-00
	Platinum	36 525 979-08
	Dark Chrome	36 525 979-19
	Light Gold	36 525 979-26
	Brushed Light Gold	36 525 979-27
	Brushed Durabronze (23kt Gold)	36 525 979-28
	Matte Black	36 525 979-33
	Brushed Bronze	36 525 979-42
	Brushed Champagne (22kt Gold)	36 525 979-46
	Champagne (22kt Gold)	36 525 979-47
	Brushed Chrome	36 525 979-93
	Brushed Dark Platinum	36 525 979-99

Required miscellaneous



WATER POINTS Adapter plate - 12 305 970 90

Required miscellaneous



Concealed wall installation box - 35 205 970 90
 • max. recess depth 110 mm
 • min. recess depth 85 mm

Recommended miscellaneous



xGRID Attachment set for integrating in the dry wall construction - 12 340 970 90

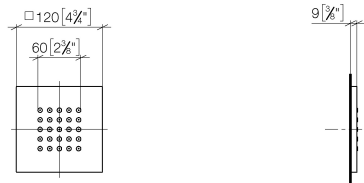
Required miscellaneous



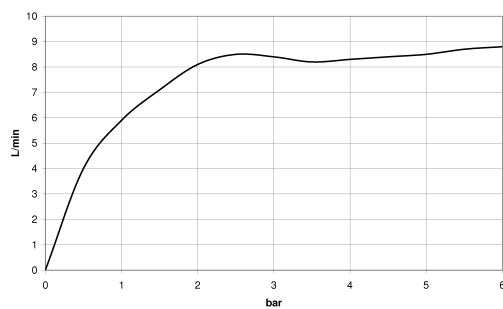
xGRID Installation track 555 mm - 12 360 970 90

36 525 979

mm [inches]



Flow rate chart



Codes & Standards

DIN 4109

ISO 3822

Ü-Zeichen



WATER POINTS Concealed body spray - Brushed Platinum

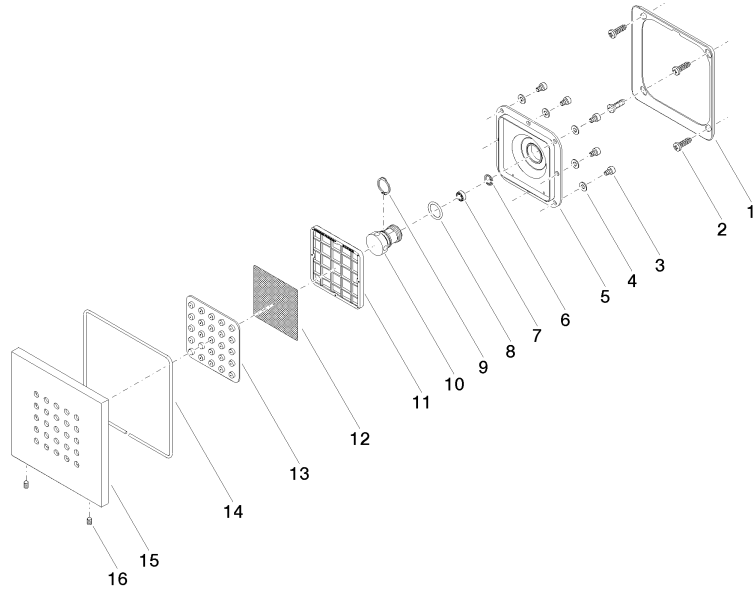
IMO

36 525 979

Certificates

LGA_38

Product version from 10/1/2023





WATER POINTS Concealed body spray - Brushed Platinum

IMO

36 525 979

Spare parts list

Product version from 10/1/2023

No.	Item Number	Name	Quantity used	Delivery time
	09 28 01 024 90	holder	34	2