

Wall valve clockwise closing cold 1/2" - Brushed Champagne (22kt Gold) SERIES SPECIFIC

36 607 741 Product version from 7/1/2023



- without rosette
- handle Ø 60mm
- with cold marking
- head part with cut-to-length spindle and sleeve
- WRAS

| | | |
|---|--------------------------------|---------------|
|  | Brushed Champagne (22kt Gold) | 36 607 741-46 |
|  | Chrome | 36 607 741-00 |
|  | Brushed Platinum | 36 607 741-06 |
|  | Dark Chrome | 36 607 741-19 |
|  | Brushed Durabronze (23kt Gold) | 36 607 741-28 |
|  | Matte Black | 36 607 741-33 |
|  | Champagne (22kt Gold) | 36 607 741-47 |
|  | Brushed Dark Platinum | 36 607 741-99 |

Required miscellaneous



- Wall valve 1/2" -** 35 607 970 90
- min. recess depth 85 mm
 - max. recess depth 145 mm

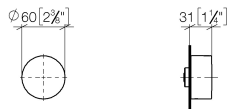


Wall valve clockwise closing cold 1/2" - Brushed Champagne (22kt Gold)

SERIES SPECIFIC

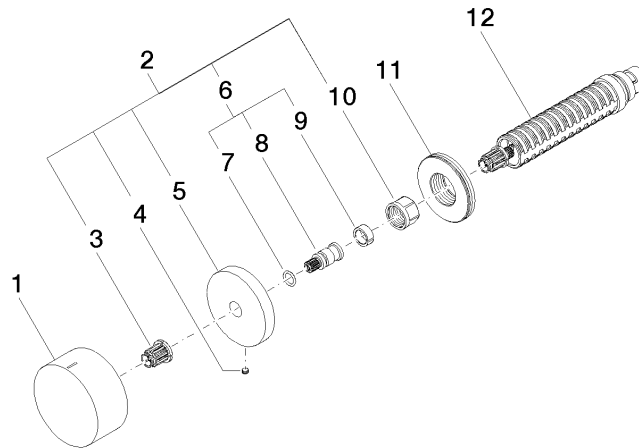
36 607 741 Product version from 7/1/2023

mm [inches]



| Codes & Standards | | | |
|-------------------|------------------------|-----------------------------|-----------|
| ASME A112.18.1 | cUPC | DIN 4109 | EN 200 |
| ISO 3822 | Scottish Water Byelaws | UK Water Supply Regulations | Ü-Zeichen |

| Certificates and sustainability | | | | |
|---------------------------------|--------|--------|-----------|--------------|
| DVGW_DW-6501DN0 | LGA_38 | LGA_29 | WRAS_2010 | IAPMO_4976 (|



Spare parts list

| No. | Item Number | Name | Quantity used | Delivery time |
|--|-----------------------|-----------------|---------------|---------------|
| | 11 09 30 01 107 90 | sleeve | 1.00 | 2 |
| | 4 09 31 11 055 90 | pin | 1.00 | 2 |
| | 8 09 29 06 020-46 | spindle | 1.00 | - |
| Spare part can no longer be ordered, please order the replacement item | | | | |
| | 6 04 29 06 020 00-00 | spindle | 1.00 | 10 |
| | 10 90 23 30 023 00 90 | nut | 1.00 | 2 |
| | 1 09 20 74 020-46 | handle (cold) | 1.00 | 60 |
| | 2 04 27 74 004 00-46 | rosette | 1.00 | 60 |
| | 3 90 12 12 002 00 90 | fixing cap | 1.00 | 2 |
| | 7 90 14 10 060 00 90 | seal | 1.00 | 2 |
| | 12 90 90 03 143 00 90 | top | 1.00 | 2 |
| | 9 90 14 15 020 03 90 | ring | 1.00 | 2 |
| | 5 09 27 74 004-46 | rosette | 1.00 | 60 |