





META Wall valve clockwise closing 3/4" - Brushed Platinum

META


36 608 660 Product version from 4/1/2024



- rosette Ø 60 mm
- head part with cut-to-length spindle and sleeve

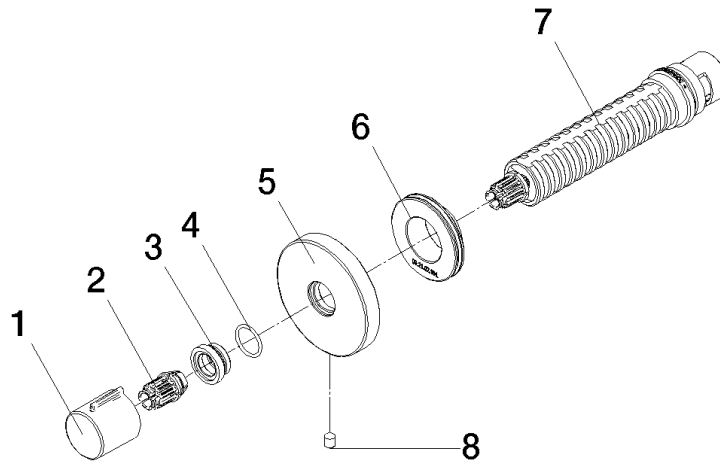
| | | |
|--|-----------------------|---------------|
|  | Brushed Platinum | 36 608 660-06 |
|  | Chrome | 36 608 660-00 |
|  | Dark Chrome | 36 608 660-19 |
|  | Light Gold | 36 608 660-26 |
|  | Brushed Light Gold | 36 608 660-27 |
|  | Matte Black | 36 608 660-33 |
|  | Brushed Dark Brass | 36 608 660-39 |
|  | Brushed Bronze | 36 608 660-42 |
|  | Brushed Chrome | 36 608 660-93 |
|  | Brushed Dark Platinum | 36 608 660-99 |

Required miscellaneous

- | | | |
|---|---|---------------|
|  | Wall valve 3/4" - • min. recess depth 75 mm • max. recess depth 145 mm | 35 608 970 90 |
|---|---|---------------|

36 608 660 Product version from 4/1/2024





Spare parts list

| No. | Item Number | Name | Quantity used | Delivery time |
|-----|----------------------|------------|---------------|---------------|
| | 3 09 12 12 043-06 | base | 1.00 | 10 |
| | 5 90 27 67 021 94-06 | rosette | 1.00 | 10 |
| | 6 09 21 02 151 90 | sleeve | 1.00 | 2 |
| | 1 09 20 98 001-06 | handle | 1.00 | 10 |
| | 2 09 12 12 005 90 | fixing cap | 1.00 | 2 |
| | 7 90 90 03 128 00 90 | top | 1.00 | 2 |
| | 8 09 31 11 004 90 | pin | 1.00 | 60 |
| | 4 09 14 10 017 90 | seal | 1.00 | 2 |