

SYMETRICS Wall valve anti-clockwise closing 3/4" - Brushed Durabrass (23kt Gold)

SYMETRICS

36 608 985 Product version from 6/1/2024



- rosette 60 x 60 mm
- head part with cut-to-length spindle and sleeve
- WRAS

	Brushed Durabrass (23kt Gold)	36 608 985-28
	Chrome	36 608 985-00
	Brushed Platinum	36 608 985-06
	Platinum	36 608 985-08
	Dark Chrome	36 608 985-19
	Brushed Light Gold	36 608 985-27
	Matte Black	36 608 985-33
	Brushed Chrome	36 608 985-93
	Brushed Dark Platinum	36 608 985-99

## Required miscellaneous



Wall valve 3/4" -

- max. recess depth 145 mm
- min. recess depth 75 mm

35 608 970 90



SYMETRICS Wall valve anti-clockwise closing 3/4" - Brushed Durabron (23kt Gold)

SYMETRICS

36 608 985 Product version from 6/1/2024  
mm [inches]

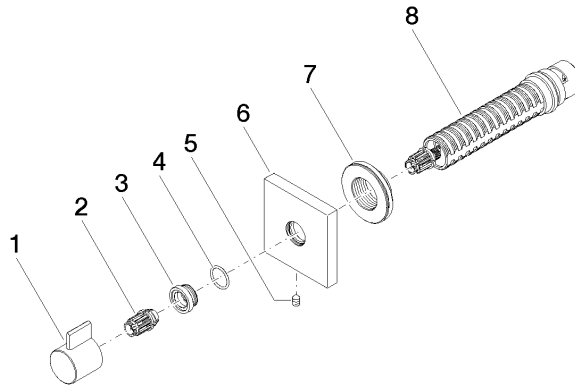


Codes & Standards

Scottish Water Byelaws	UK Water Supply Regulations
---------------------------	--------------------------------

Certificates and sustainability

WRAS\_2010



## Spare parts list

No.	Item Number	Name	Quantity used	Delivery time
8	90 90 03 128 00 90	top	1.00	2
6	09 27 98 014-28	rosette	1.00	20
2	09 12 12 005 90	fixing cap	1.00	2
1	09 20 98 002-28	handle	1.00	20
7	09 21 02 151 90	sleeve	1.00	2
4	09 14 10 017 90	seal	1.00	2
3	09 12 12 043-28	base	1.00	20
5	90 31 11 004 00 90	pin	1.00	2