

META META SLIM Wall-mounted single-lever basin mixer without pop-up waste - Brushed Light Gold

META

36 860 662 Product version from 9/1/2021



- 190mm projection
- fixed spout
- circular, air-enriched flow
- hole diameter spout 37 mm
- hole diameter single-lever mixer 57 mm
- rosette for spout Ø 55mm
- rosette for mixer Ø 78mm
- max. flow 5.7 l/min
- lead-free
- This product can help a building meet the requirements of Green Building Rating Systems, e.g. LEED®, BREEAM®, DGNB

	Brushed Light Gold	36 860 662-27
	Chrome	36 860 662-00
	Brushed Platinum	36 860 662-06
	Dark Chrome	36 860 662-19
	Light Gold	36 860 662-26
	Matte Black	36 860 662-33
	Brushed Dark Brass	36 860 662-39
	Brushed Bronze	36 860 662-42
	Brushed Champagne (22kt Gold)	36 860 662-46
	Champagne (22kt Gold)	36 860 662-47
	Brushed Chrome	36 860 662-93
	Brushed Dark Platinum	36 860 662-99

Required miscellaneous



Concealed wall-mounted single-lever mixer mixer on right - 35 816 970 90

- NOTE: Not suitable for concealed installation. Connection by means of angle valves, mounted with screws to back wall.

Required miscellaneous



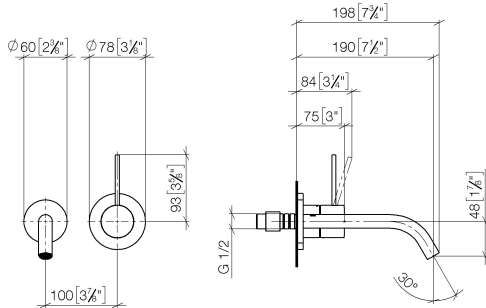
Concealed wall-mounted single-lever mixer - 35 860 970 90

- min. recess depth 80 mm
- max. recess depth 95 mm
- mixer can be placed above, to the left or to the right of the spout.

META META SLIM Wall-mounted single-lever basin mixer without pop-up waste - Brushed Light Gold

META

36 860 662 Product version from 9/1/2021
mm [inches]



Flow rate chart



Trajectory diagram



Codes & Standards

EN 817



META META SLIM Wall-mounted single-lever basin mixer without pop-up waste - Brushed Light Gold

META

36 860 662 Product version from 9/1/2021

Certificates and sustainability

DVGW_DW-
6512DN0

**META META SLIM Wall-mounted single-lever basin mixer without pop-up
waste - Brushed Light Gold**

META

36 860 662 Product version from 9/1/2021

