


META META PURE Wall-mounted single-lever basin mixer without pop-up waste - Chrome

META

36 860 664 Product version from 7/1/2023



- 190mm projection
- fixed spout
- circular, air-enriched flow
- hole diameter spout 37 mm
- hole diameter single-lever mixer 57 mm
- rosette for spout Ø 55mm
- rosette for mixer Ø 78mm
- max. flow 5.7 l/min
- lead-free
- This product can help a building meet the requirements of Green Building Rating Systems, e.g. LEED®, BREEAM®, DGNB
- WRAS

	Chrome	36 860 664-00
	Brushed Platinum	36 860 664-06
	Dark Chrome	36 860 664-19
	Light Gold	36 860 664-26
	Brushed Light Gold	36 860 664-27
	Matte Black	36 860 664-33
	Brushed Dark Brass	36 860 664-39
	Brushed Bronze	36 860 664-42
	Brushed Champagne (22kt Gold)	36 860 664-46
	Champagne (22kt Gold)	36 860 664-47
	Brushed Chrome	36 860 664-93
	Brushed Dark Platinum	36 860 664-99

Required miscellaneous



Concealed wall-mounted single-lever mixer - 35 860 970 90

- max. recess depth 95 mm
- min. recess depth 80 mm
- mixer can be placed above, to the left or to the right of the spout.

META META PURE Wall-mounted single-lever basin mixer without pop-up waste - Chrome

META

36 860 664 Product version from 7/1/2023
mm [inches]



Flow rate chart



Trajectory diagram



Codes & Standards

DIN 4109

EN 817

ISO 3822

Scottish Water
Byelaws

UK Water Supply
Regulations

Ü-Zeichen



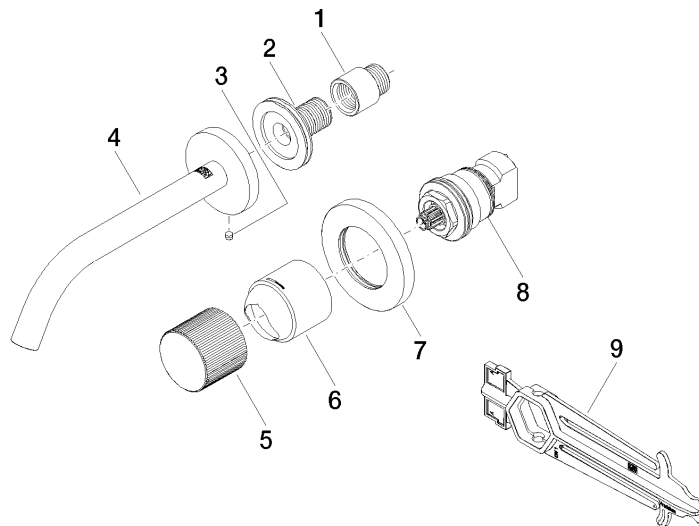
META META PURE Wall-mounted single-lever basin mixer without pop-up
waste - Chrome

META

36 860 664 Product version from 7/1/2023

Certificates and sustainability

WRAS_2010	DVGW_DW- 6512DN0	LGA_29
-----------	---------------------	--------



Spare parts list

No.	Item Number	Name	Quantity used	Delivery time
2	90 24 03 280 00 90	nipple	1.00	2
1	09 24 03 072 10 90	nipple	1.00	2
6	09 11 02 389-00	cover	1.00	10
8	90 90 03 169 02 90	top	1.00	2
4	90 28 22 323 00-00	spout	1.00	10
3	09 31 11 112 90	pin	1.00	60
5	09 20 66 010-00	handle	1.00	10
7	90 27 62 011 00-00	rosette	1.00	10
9	90 30 09 064 00 90	key	1.00	2