




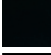


## LISSE Wall-mounted single-lever basin mixer without pop-up waste - Chrome

LISSE


36 860 845




- 170mm projection
- fixed spout
- circular, air-enriched flow
- hole diameter spout 37 mm
- hole diameter single-lever mixer 57 mm
- rosette 78 x 78 mm
- max. flow 5.7 l/min
- lead-free
- This product can help a building meet the requirements of Green Building Rating Systems, e.g. LEED®, BREEAM®, DGNB

|   |                       |               |
|---|-----------------------|---------------|
|  | Chrome                | 36 860 845-00 |
|  | Brushed Platinum      | 36 860 845-06 |
|  | Dark Chrome           | 36 860 845-19 |
|  | Matte Black           | 36 860 845-33 |
|  | Brushed Chrome        | 36 860 845-93 |
|  | Brushed Dark Platinum | 36 860 845-99 |

### Required miscellaneous

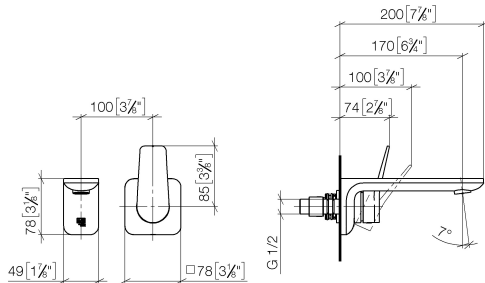
-  **Concealed wall-mounted single-lever mixer mixer on right -** 35 816 970 90
- NOTE: Not suitable for concealed installation. Connection by means of angle valves, mounted with screws to back wall.

### Required miscellaneous

-  **Concealed wall-mounted single-lever mixer -** 35 860 970 90
- max. recess depth 95 mm
  - min. recess depth 80 mm

36 860 845

mm [inches]



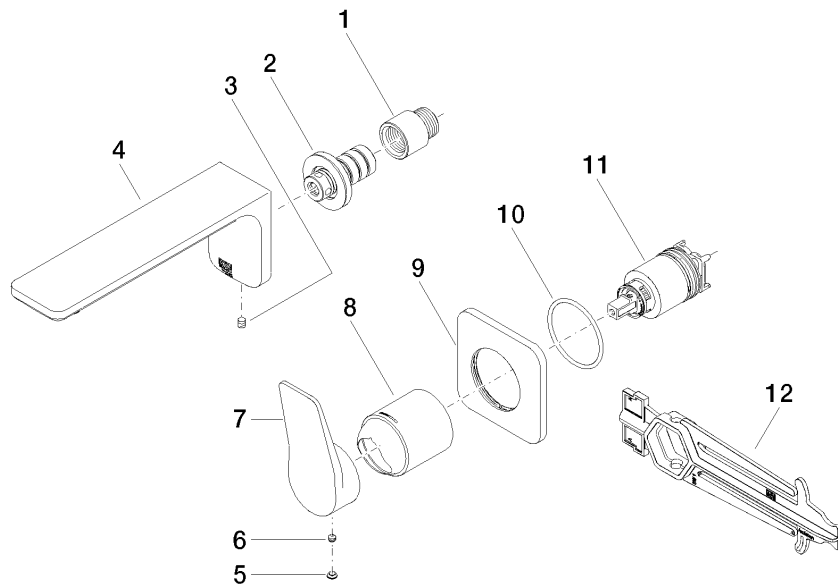
### Flow rate chart



### Certificates

IAPMO\_N-4976 (2). DVGW\_DW- IAPMO\_8834 (2). IAPMO\_6397 (2). IAPMO\_4976 (1).  
6512DN0435.  
LGA\_29900. WRAS\_2107018.

36 860 845



## Spare parts list

| No. | Item Number        | Name       | Quantity used | Delivery time |
|-----|--------------------|------------|---------------|---------------|
| 1   | 09 24 03 072 10 90 | nipple     | 1             | 2             |
| 2   | 90 24 03 108 00 90 | nipple set | 1             | 2             |
| 3   | 90 31 11 004 00 90 | pin        | 1             | 2             |
| 4   | 90 11 84 021 00-00 | spout      | 1             | 10            |
| 5   | 90 31 20 087 00-00 | plug       | 1             | 10            |
| 6   | 90 31 11 063 00 90 | pin        | 1             | 2             |
| 7   | 09 20 84 021-00    | handle     | 1             | 10            |
| 8   | 09 11 02 288-00    | cover      | 1             | 10            |
| 9   | 90 27 84 020 00-00 | rosette    | 1             | 10            |
| 10  | 90 14 10 049 00 90 | seal       | 1             | 2             |
| 11  | 90 15 05 064 01 90 | cartridge  | 1             | 2             |
| 12  | 90 30 09 064 00 90 | key        | 1             | 2             |