




**IMO Wall-mounted single-lever basin mixer without pop-up waste - Brushed Chrome**

IMO

36 861 670



- 170mm projection
- fixed spout
- rectangular, air-enriched flow
- hole diameter spout 37 mm
- hole diameter single-lever mixer 57 mm
- rosette for spout 80 x 60mm
- rosette for mixer 80 x 80mm
- max. flow 5.7 l/min
- lead-free
- This product can help a building meet the requirements of Green Building Rating Systems, e.g. LEED®, BREEAM®, DGNB
- WRAS 2107018

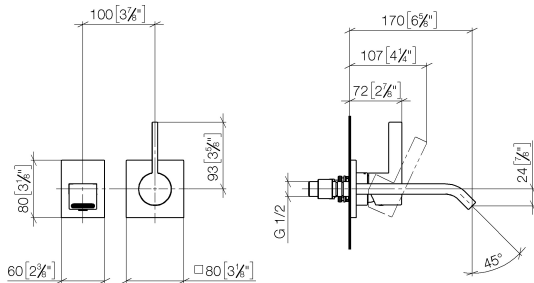
	Brushed Chrome	36 861 670-93
	Chrome	36 861 670-00
	Brushed Platinum	36 861 670-06

## IMO Wall-mounted single-lever basin mixer without pop-up waste - Brushed Chrome

IMO

36 861 670

mm [inches]



### Flow rate chart



### Codes & Standards

DIN 4109

EN 817

ISO 3822

Scottish Water  
Byelaws

UK Water Supply  
Regulations

Ü-Zeichen



## IMO Wall-mounted single-lever basin mixer without pop-up waste - Brushed Chrome

---

IMO

36 861 670

Certificates

---

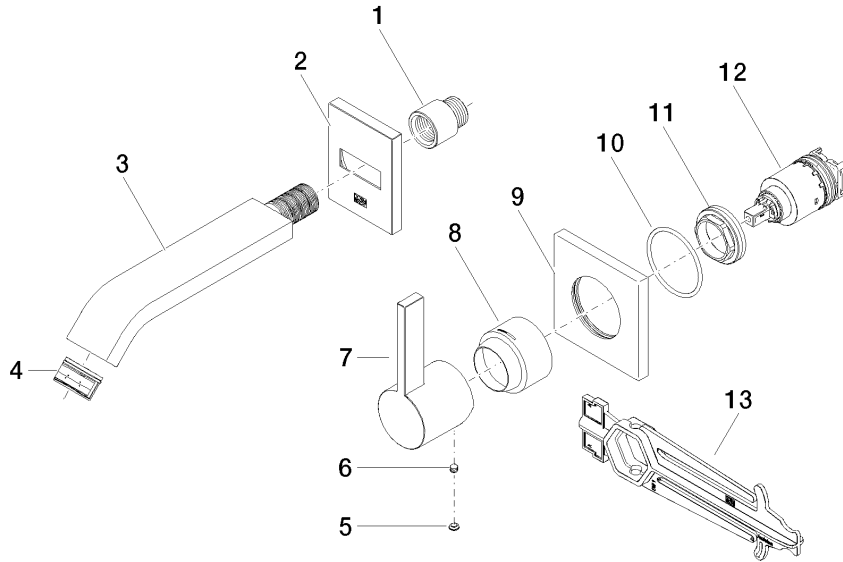
WRAS\_2107

LGA\_29

DVGW\_DW-  
6512DN0

**Product version from 4/1/2024**

Parts for other  
finishes can be found  
here: [Chrome](#)





IMO Wall-mounted single-lever basin mixer without pop-up waste - Brushed Chrome

IMO

36 861 670

Spare parts list

Product version from 4/1/2024

No.	Item Number	Name	Quantity used	Delivery time
	09 24 03 072 10 90	nipple	13	2