

MEM Wall-mounted single-lever basin mixer without pop-up waste - Dark Chrome

36 861 782



- 207mm projection
- fixed spout
- rectangular, air-enriched flow
- hole diameter spout 37 mm
- hole diameter single-lever mixer 57 mm
- rosette for spout 80 x 60mm
- rosette for mixer 80 x 80mm
- max. flow 5.7 l/min
- lead-free
- This product can help a building meet the requirements of Green Building Rating Systems, e.g. LEED®, BREEAM®, DGNB
- WRAS

	Dark Chrome	36 861 782-19
	Chrome	36 861 782-00
	Brushed Platinum	36 861 782-06
	Platinum	36 861 782-08
	Brushed Durabrass (23kt Gold)	36 861 782-28
	Brushed Champagne (22kt Gold)	36 861 782-46
	Champagne (22kt Gold)	36 861 782-47
	Brushed Dark Platinum	36 861 782-99

Required miscellaneous



- Concealed wall-mounted single-lever mixer mixer on right -

35 816 970 90

•NOTE:Not suitable for concealed installation.Connection by means of angle valves, mounted with screws to back wall.



- Concealed wall-mounted single-lever mixer -

35 860 970 90

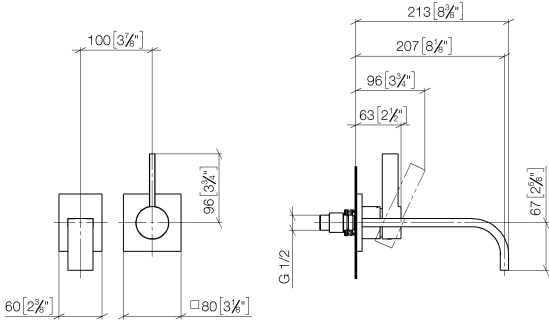
•min. recess depth mm

•max. recess depth mm

•mixer can be placed above, to the left or to the right of the spout.

**MEM Wall-mounted single-lever basin mixer without pop-up waste - Dark Chrome**

36 861 782  
mm [inches]



**Flow rate chart**



**Codes & Standards**

DIN 4109

EN 817

ISO 3822

Scottish Water  
Byelaws

UK Water Supply  
Regulations

Ü-Zeichen



MEM Wall-mounted single-lever basin mixer without pop-up waste - Dark  
Chrome

---

36 861 782  
Certificates

---

LGA_29	DVGW_DW- 6512DN0	WRAS_2107
--------	---------------------	-----------

## MEM Wall-mounted single-lever basin mixer without pop-up waste - Dark Chrome

36 861 782

