

META Wall-mounted single-lever basin mixer with individual rosettes - Light Gold

META

36 863 660 Product version from 7/1/2023



- 90° spout
- 250mm projection
- fixed spout
- circular, air-enriched flow
- hole diameter spout 37 mm
- hole diameter single-lever mixer 57 mm
- rosette for spout Ø 60mm
- rosette for mixer Ø 78mm
- max. flow 5.7 l/min
- lead-free
- This product can help a building meet the requirements of Green Building Rating Systems, e.g. LEED®, BREEAM®, DGNB
- WRAS

	Light Gold	36 863 660-26
	Chrome	36 863 660-00
	Brushed Platinum	36 863 660-06
	Dark Chrome	36 863 660-19
	Brushed Light Gold	36 863 660-27
	Matte Black	36 863 660-33
	Brushed Dark Brass	36 863 660-39
	Brushed Bronze	36 863 660-42
	Brushed Champagne (22kt Gold)	36 863 660-46
	Champagne (22kt Gold)	36 863 660-47
	Brushed Chrome	36 863 660-93
	Brushed Dark Platinum	36 863 660-99

Required miscellaneous



Concealed wall-mounted single-lever mixer - 35 860 970 90

- min. recess depth 80 mm
- max. recess depth 95 mm
- mixer can be placed above, to the left or to the right of the spout.

Required miscellaneous



Concealed wall-mounted single-lever mixer mixer on right - 35 816 970 90

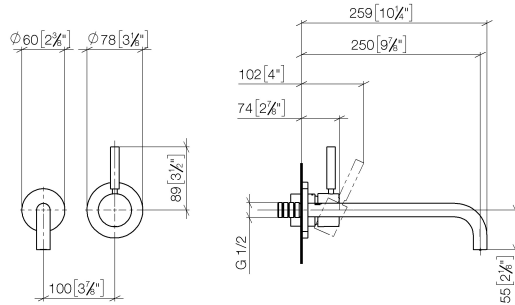
- NOTE: Not suitable for concealed installation. Connection by means of angle valves, mounted with screws to back wall.

META Wall-mounted single-lever basin mixer with individual rosettes - Light Gold

META

36 863 660 Product version from 7/1/2023

mm [inches]



Flow rate chart



Codes & Standards

Scottish Water
Byelaws

UK Water Supply
Regulations



META Wall-mounted single-lever basin mixer with individual rosettes - Light Gold

META

36 863 660 Product version from 7/1/2023

Certificates and sustainability

WRAS_2107



Spare parts list

No.	Item Number	Name	Quantity used	Delivery time
2	90 24 03 280 00 90	nipple	1.00	2
9	90 30 09 064 00 90	key	1.00	2
5	90 20 66 007 00-26	handle	1.00	30
1	09 24 03 072 10 90	nipple	1.00	2
7	90 27 62 011 00-26	rosette	1.00	30
6	09 11 02 288-26	cover	1.00	60
4	90 28 22 352 00-26	spout	1.00	30
8	90 15 05 064 01 90	cartridge	1.00	2
3	09 31 11 112 90	pin	1.00	60