

## META Wall-mounted single-lever basin mixer without pop-up waste - Light Gold

META

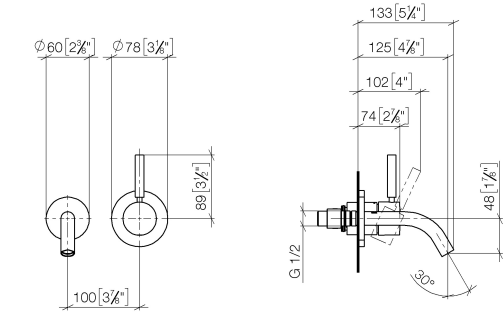
36 867 660 Product version from 7/1/2023



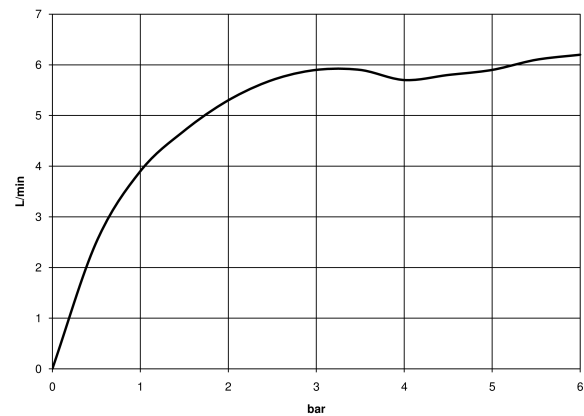
- 125mm projection
- fixed spout
- circular, air-enriched flow
- hole diameter spout 35 mm
- hole diameter single-lever mixer 57 mm
- rosette for single-lever mixer Ø 78mm
- rosette for spout Ø 60mm
- max. flow 5.7 l/min
- lead-free
- This product can help a building meet the requirements of Green Building Rating Systems, e.g. LEED®, BREEAM®, DGNB
- WRAS

	Light Gold	36 867 660-26
	Chrome	36 867 660-00
	Brushed Platinum	36 867 660-06
	Dark Chrome	36 867 660-19
	Brushed Light Gold	36 867 660-27
	Matte Black	36 867 660-33
	Brushed Bronze	36 867 660-42
	Brushed Champagne (22kt Gold)	36 867 660-46
	Champagne (22kt Gold)	36 867 660-47
	Brushed Chrome	36 867 660-93
	Brushed Dark Platinum	36 867 660-99

mm [inches]



Flow rate chart



### Codes & Standards

DIN 4109	ISO 3822	Scottish Water Byelaws	UK Water Supply Regulations
----------	----------	---------------------------	--------------------------------

Ü-Zeichen



## META Wall-mounted single-lever basin mixer without pop-up waste - Light Gold

---

META

36 867 660 Product version from 7/1/2023

### Certificates and sustainability

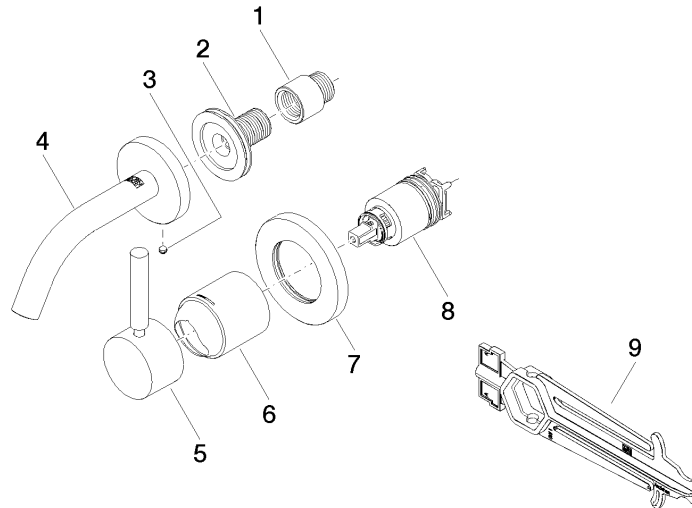
---

WRAS\_2107

LGA\_38

36 867 660 Product version from 7/1/2023

Parts for other  
finishes can be found  
here: [Chrome](#)



## Spare parts list

No.	Item Number	Name	Quantity used	Delivery time
3	09 31 11 148 90	pin	1.00	2
7	90 27 62 011 00-26	rosette	1.00	30
2	90 24 03 280 00 90	nipple	1.00	2
1	09 24 03 072 10 90	nipple	1.00	2
8	90 15 05 064 01 90	cartridge	1.00	2
9	90 30 09 064 00 90	key	1.00	2
6	09 11 02 288-26	cover	1.00	60
4	90 28 22 362 00-26	spout	1.00	30
5	90 20 66 007 00-26	handle	1.00	30