


META META SLIM Wall-mounted single-lever basin mixer without pop-up waste - Brushed Bronze

META

36 867 662 Product version from 7/1/2023



- 125mm projection
- fixed spout
- circular, air-enriched flow
- hole diameter single-lever mixer 57 mm
- hole diameter spout 35 mm
- rosette for single-lever mixer Ø 78mm
- rosette for spout Ø 60mm
- max. flow 5.7 l/min
- lead-free
- This product can help a building meet the requirements of Green Building Rating Systems, e.g. LEED®, BREEAM®, DGNB

	Brushed Bronze	36 867 662-42
	Chrome	36 867 662-00
	Brushed Platinum	36 867 662-06
	Dark Chrome	36 867 662-19
	Light Gold	36 867 662-26
	Brushed Light Gold	36 867 662-27
	Matte Black	36 867 662-33
	Brushed Dark Brass	36 867 662-39
	Brushed Champagne (22kt Gold)	36 867 662-46
	Champagne (22kt Gold)	36 867 662-47
	Brushed Chrome	36 867 662-93
	Brushed Dark Platinum	36 867 662-99

Required miscellaneous



- Concealed wall-mounted single-lever mixer -** 35 860 970 90
- min. recess depth 80 mm
 - max. recess depth 95 mm
 - mixer can be placed above, to the left or to the right of the spout.

Required miscellaneous

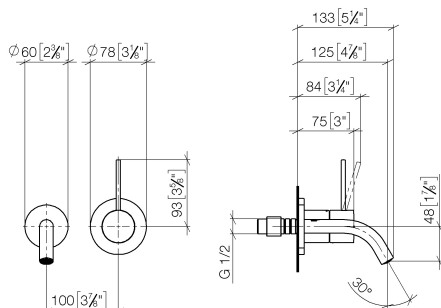


- Concealed wall-mounted single-lever mixer mixer on right -** 35 816 970 90
- NOTE: Not suitable for concealed installation. Connection by means of angle valves, mounted with screws to back wall.

META META SLIM Wall-mounted single-lever basin mixer without pop-up waste - Brushed Bronze

META

36 867 662 Product version from 7/1/2023
mm [inches]



Flow rate chart



Codes & Standards

DIN 4109

ISO 3822

Ü-Zeichen



META META SLIM Wall-mounted single-lever basin mixer without pop-up waste - Brushed Bronze

META

36 867 662 Product version from 7/1/2023

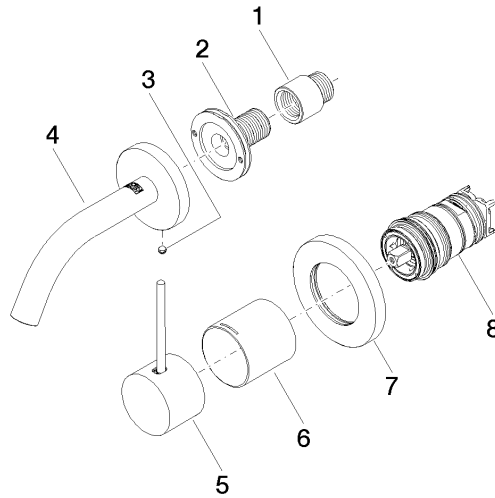
Certificates and sustainability

LGA_38

META META SLIM Wall-mounted single-lever basin mixer without pop-up waste - Brushed Bronze

META

36 867 662 Product version from 7/1/2023



Spare parts list

No.	Item Number	Name	Quantity used	Delivery time
5	90 20 66 022 00-42	handle	1.00	30
7	90 27 62 011 00-42	rosette	1.00	30
3	09 31 11 148 90	pin	1.00	2
1	09 24 03 072 10 90	nipple	1.00	2
8	90 15 05 044 02 90	cartridge	1.00	2
6	09 11 02 336-42	sleeve	1.00	60
4	90 28 22 362 00-42	spout	1.00	30
2	90 24 03 280 00 90	nipple	1.00	2