

41 610 979



- exposed trim parts
- Rain panel with 2 different spray modes
- AQUACIRCLE RAIN: Circular rain curtain, max. flow rate 6.8 l/min (at 3 bar)
- TEMPEST RAIN: Natural rain, max. flow rate 5 l/min (at 3 bar)
- with anti-scale system

Technical data:

- Outer diameter 1240 mm, opening diameter 450 mm
- Weight 22.5 kg
- Matt white cover, RAL 9003

Electric:

Ambient lighting

- LED colour temperature approx. 2700 K
- Bulbs protected against splashing water
- Technology: LED, not dimmable
- Provided by customer: Light switch

Environment

Planning tips:

- Not suitable for use in a steam room.
- Not suitable for outdoor use.
- Not suitable for use in chlorinated or salty environments.
- Comply with the protection zone regulations as defined in DIN VDE 0100, Part 701 (IEC 60364-7-701).

Notes:

- Control elements not included among the items supplied
- Rain panel cover for adaptation to ceiling colour available in all RAL colours, price and delivery time on request**
- Pre-assembly kit for three-way diverter included**

Rain panel cover for adaptation to ceiling colour available in all RAL colours, price and delivery time on request

Pre-assembly kit for three-way diverter included

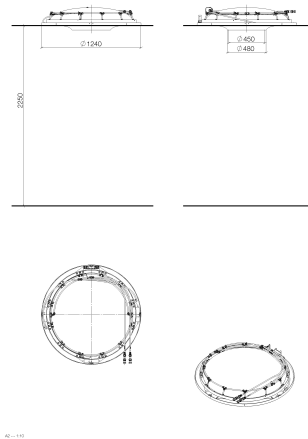
Required miscellaneous



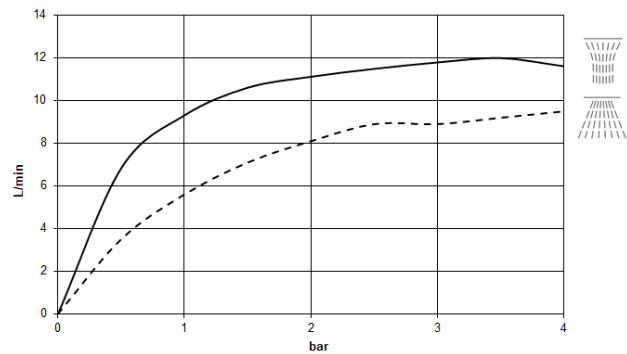
RAINMOON Concealed ceiling installation box - 35 610 970 90

- Ceiling installation enclosure 1356 x 1356 x 290 mm
- concealed rough parts
- Opening diameter 1252 mm
- min. recess depth 290 mm
- Pre-assembly kit for three-way diverter included

41 610 979



Flow rate chart



Codes & Standards

DIN 4109

ISO 3822

Ü-Zeichen



RAINMOON Rain panel - Matte White

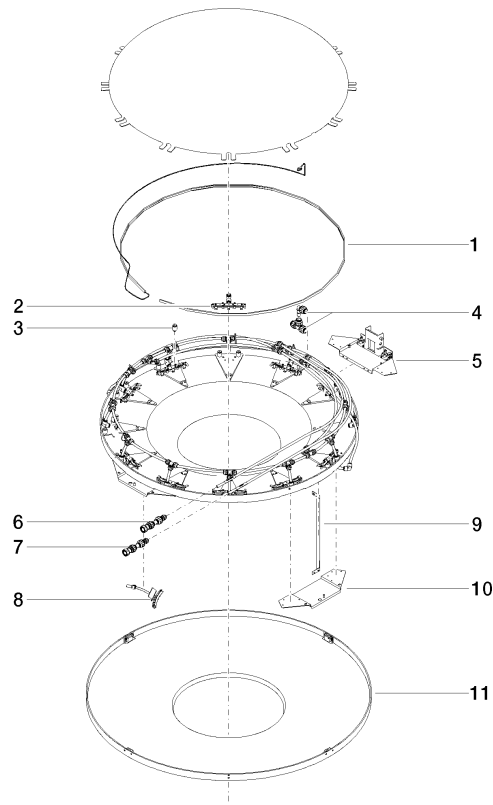
SERIES-VARIOUS

41 610 979

Certificates and sustainability

LGA_29

41 610 979



Spare parts list

| No. | Item Number | Name | Quantity used | Delivery time |
|-----|--------------------|-----------------------|---------------|---------------|
| 1 | 90 10 01 183 00 90 | lamp | 1.00 | 2 |
| 9 | 90 17 20 217 00 90 | holder | 4.00 | 2 |
| 6 | 90 24 04 346 01 90 | connection AQUACIRCLE | 1.00 | 2 |
| 2 | 90 17 09 056 01 90 | jet module | 12.00 | 60 |
| 11 | 90 11 02 325 00 90 | cover | 1.00 | 2 |
| 4 | 90 24 04 321 00 90 | threaded connector | 1.00 | 2 |
| 3 | 90 18 40 222 00 90 | adaptor | 24.00 | 2 |
| 5 | 90 17 20 211 00 90 | joint | 1.00 | 2 |
| 8 | 90 17 09 057 01 90 | jet module | 12.00 | 2 |
| 7 | 90 24 04 346 02 90 | connection TEMPEST | 1.00 | 2 |
| 10 | 90 17 20 216 00 90 | holder | 3.00 | 2 |