

AQUAMOON EMBRACE Rain panel with color light - Matte White

41 630 979



- exposed trim parts
- AQUACIRCLE RAIN: Circular rain curtain, max. flow rate 12 l/min (at 3 bar)
- TEMPEST RAIN: Natural rain, max. flow rate 10 l/min (at 3 bar)
- QUEEN'S COLLAR CASCADE: Rounded cascade, max. flow rate 24 l/min (at 3 bar)
- EMBRACE CASCADE: Circular cascade, max. flow rate 60 l/min (at 3 bar)
- RGBW LED ambient lighting
- Matt white cover, RAL 9003
- with anti-scale system
- Outer diameter 1240 mm, opening diameter 450 mm
- Weight 22.5 kg
- Protection rating IP67
- Control elements not included among the items supplied

Ceiling module power supply

- 12V DC (CV)

Ambient lighting

- LED coloured light RGBW
- Bulbs protected against splashing water

Activation

- ZigBee Light Link RGBW controller
- Provided by customer: Zigbee gateway

Environment

- Not suitable for outdoor use.
- Not suitable for use in a steam room.
- Not suitable for use in chlorinated or salty environments.
- Comply with the protection zone regulations as defined in DIN VDE 0100, Part 701 (IEC 60364-7-701).
- Dornbracht recommends consulting a systems integrator.

Rain panel cover for adaptation to ceiling colour available in all RAL colours, price and delivery time on request

includes light bulbs with a Class G energy efficiency

Required miscellaneous



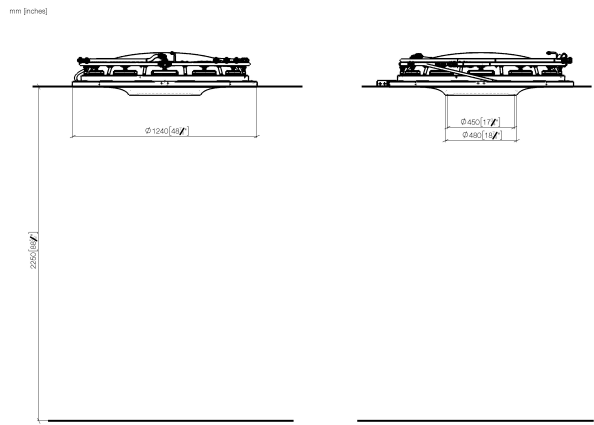
AQUAMOON EMBRACE Concealed ceiling installation box with color light -

35 630 970 90

- Ceiling installation enclosure 1356 x 1356 x 290 mm
- Ceiling installation enclosure 1356 x 1356 x 290 mm
- concealed rough parts
- Opening diameter 1252 mm
- min. recess depth mm

AQUAMOON EMBRACE Rain panel with color light - Matte White

41 630 979



Codes & Standards

DIN 4109

ISO 3822

Ü-Zeichen

Certificates

LGA_38