

83 251 892



- width 70mm
- rosette Ø 55 mm
- 64mm projection

Fits TARA

| | | |
|---|-------------------------------|---------------|
|  | Platinum | 83 251 892-08 |
|  | Chrome | 83 251 892-00 |
|  | Brushed Platinum | 83 251 892-06 |
|  | Durabrass (23kt Gold) | 83 251 892-09 |
|  | Dark Chrome | 83 251 892-19 |
|  | Brushed Light Gold | 83 251 892-27 |
|  | Brushed Durabrass (23kt Gold) | 83 251 892-28 |
|  | Matte Black | 83 251 892-33 |
|  | Brushed Bronze | 83 251 892-42 |
|  | Brushed Champagne (22kt Gold) | 83 251 892-46 |
|  | Champagne (22kt Gold) | 83 251 892-47 |
|  | Brushed Chrome | 83 251 892-93 |
|  | Brushed Dark Platinum | 83 251 892-99 |

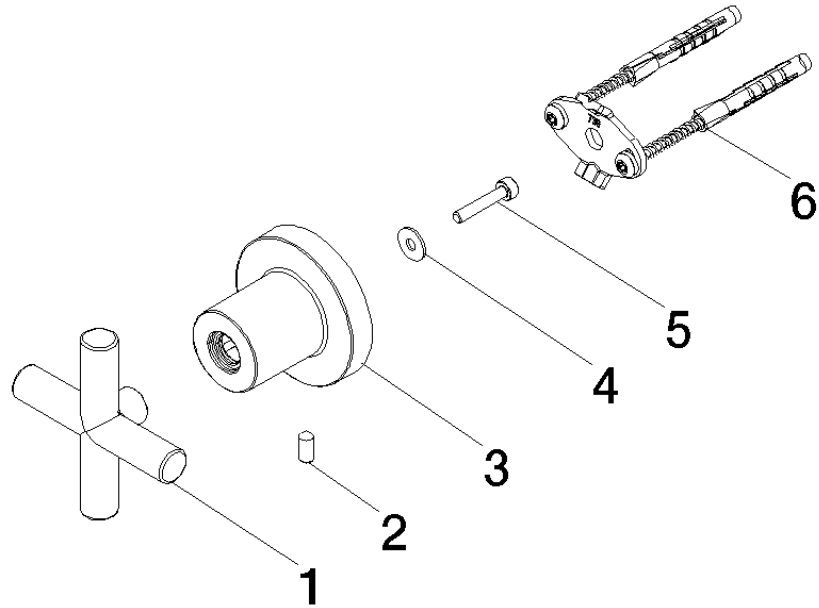
83 251 892

mm [inches]



83 251 892

Parts for other
finishes can be found
here: [Chrome](#)



Spare parts list

| No. | Item Number | Name | Quantity used | Delivery time |
|-----|--------------------|------------|---------------|---------------|
| 4 | 09 30 11 040 90 | disc | 1.00 | 2 |
| 2 | 04 31 11 113 00 90 | pin | 1.00 | 2 |
| 3 | 08 17 89 505-08 | holder | 1.00 | 40 |
| 6 | 05 17 20 739 00 90 | fixing set | 1.00 | 2 |
| 5 | 09 30 30 182 90 | screw | 1.00 | 2 |
| 1 | 90 20 89 010 10-08 | handle | 1.00 | 40 |