
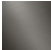








Towel warmer , 6-fold , projection right , without control element - Brushed Dark Platinum

SERIES SPECIFIC

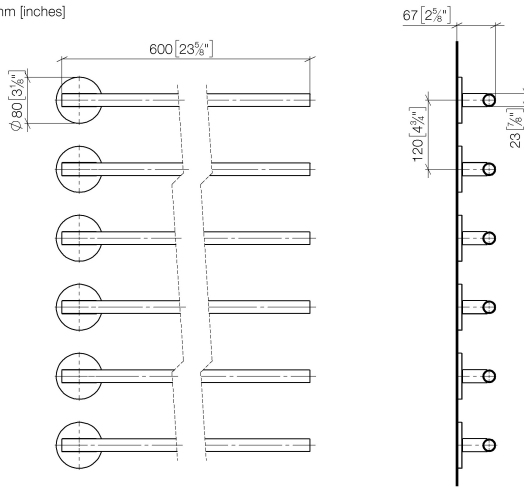
83 316 979	Product version from 4/1/2025		
	<ul style="list-style-type: none"> <li>gauge 120 mm</li> <li>width 610mm</li> <li>height 680 mm</li> <li>rosette Ø 80 mm</li> <li>Projection: 67 mm</li> <li>Degree of protection IP 44, CE marking</li> <li>Output per towel bar: 15 watts</li> <li>Rated voltage: 220 - 240 V AC</li> </ul> <p><b>Without control element</b></p> <p><b>Activation must be handled by the customer</b></p> <p><b>Note: Different conditioning.</b></p> <p>Without control element</p> <p>Activation must be handled by the customer</p> <p>Note: Different conditioning.</p>	<div>  <div>Brushed Dark Platinum</div> <div>83 316 979-99</div> </div> <div>  <div>Chrome</div> <div>83 316 979-00</div> </div> <div>  <div>Dark Chrome</div> <div>83 316 979-19</div> </div> <div>  <div>Matte Black</div> <div>83 316 979-33</div> </div> <div>  <div>Brushed Champagne (22kt Gold)</div> <div>83 316 979-46</div> </div> <div>  <div>Brushed Chrome</div> <div>83 316 979-93</div> </div>	

Required miscellaneous

	<p><b>Concealed wall installation box for towel warmer , 6-fold , without control element -</b></p> <ul style="list-style-type: none"> <li>min. recess depth 70 mm</li> <li>max. recess depth 105 mm</li> </ul>	35 313 970 90
-----------------------------------------------------------------------------------	-----------------------------------------------------------------------------------------------------------------------------------------------------------------------------------------------------------------	---------------

# Towel warmer , 6-fold , projection right , without control element - Brushed Dark SERIES SPECIFIC Platinum

83 316 979 Product version from 4/1/2025  
mm [inches]



Towel warmer , 6-fold , projection right , without control element - Brushed Dark
SERIES SPECIFIC
Platinum

83 316 979
Product version from 4/1/2025



Spare parts list

No.	Item Number	Name	Quantity used	Delivery time
1	90 17 97 103 00-99	holder	1.00	20
2	90 30 30 252 00 90	fixing set	1.00	30