

Tissue holder without cover - Chrome

83 500 979    Product version from 7/1/2023



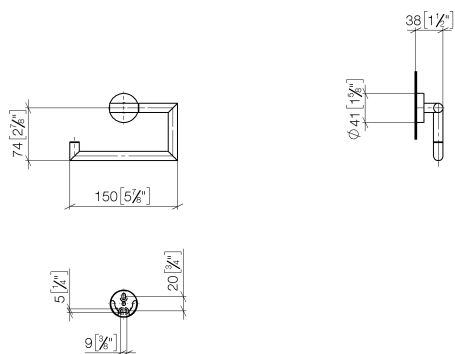
- width 150mm
- height 95 mm
- rosette Ø 40 mm
- 40mm projection

|   |                               |               |
|---|-------------------------------|---------------|
|    | Chrome                        | 83 500 979-00 |
|    | Brushed Platinum              | 83 500 979-06 |
|    | Dark Chrome                   | 83 500 979-19 |
|    | Light Gold                    | 83 500 979-26 |
|    | Brushed Light Gold            | 83 500 979-27 |
|    | Matte Black                   | 83 500 979-33 |
|    | Brushed Bronze                | 83 500 979-42 |
|    | Brushed Champagne (22kt Gold) | 83 500 979-46 |
|    | Champagne (22kt Gold)         | 83 500 979-47 |
|   | Brushed Chrome                | 83 500 979-93 |
|  | Brushed Dark Platinum         | 83 500 979-99 |

## Tissue holder without cover - Chrome

83 500 979 Product version from 7/1/2023

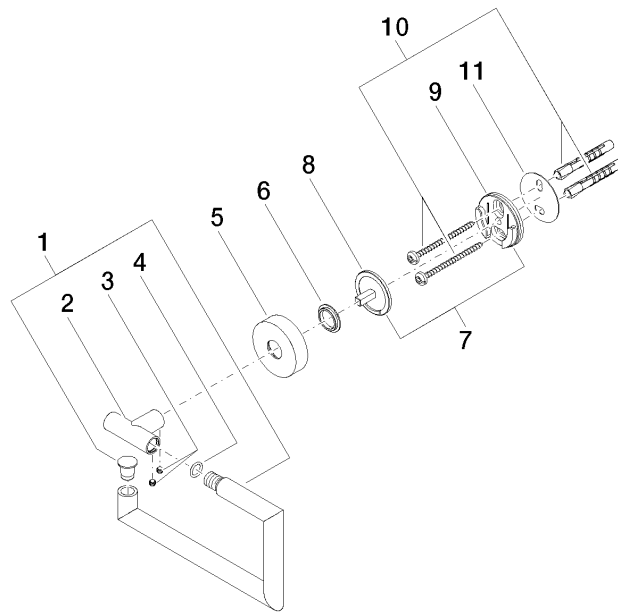
mm [inches]



## Tissue holder without cover - Chrome

83 500 979 Product version from 7/1/2023

Parts for other  
finishes can be found  
here: Brushed  
Platinum



## Spare parts list

| No. | Item Number        | Name       | Quantity used | Delivery time |
|-----|--------------------|------------|---------------|---------------|
| 1   | 90 28 22 626 00-00 | holder     | 1             | 10            |
| 2   | 05 17 97 561 01-00 | holder     | 1             | 10            |
| 3   | 90 31 11 038 00 90 | pin        | 2             | 2             |
| 4   | 90 14 10 060 00 90 | seal       | 1             | 2             |
| 5   | 08 27 97 500-00    | rosette    | 1             | 10            |
| 6   | 08 30 11 516 90    | ring       | 1             | 2             |
| 7   | 05 17 97 501 01 90 | fixing set | 1             | 2             |
| 8   | 08 17 97 559 90    | holder     | 1             | 2             |
| 9   | 08 17 97 501 07    | holder     | 1             | 2             |
| 10  | 05 30 31 025 00 90 | fixing set | 1             | 2             |
| 11  | 05 30 11 519 00 90 | disc       | 1             | 2             |