

Tissue holder with cover - Light Gold

SERIES SPECIFIC

83 510 979 Product version from 7/1/2023

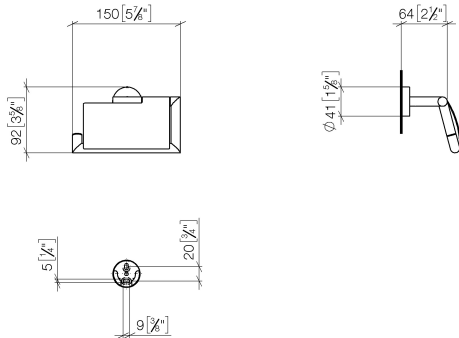


- width 150mm
- height 95 mm
- rosette Ø 40 mm
- 40mm projection

| | | |
|---|-------------------------------|---------------|
|  | Light Gold | 83 510 979-26 |
|  | Chrome | 83 510 979-00 |
|  | Brushed Platinum | 83 510 979-06 |
|  | Dark Chrome | 83 510 979-19 |
|  | Brushed Light Gold | 83 510 979-27 |
|  | Matte Black | 83 510 979-33 |
|  | Brushed Dark Brass | 83 510 979-39 |
|  | Brushed Bronze | 83 510 979-42 |
|  | Brushed Champagne (22kt Gold) | 83 510 979-46 |
|  | Champagne (22kt Gold) | 83 510 979-47 |
|  | Brushed Chrome | 83 510 979-93 |
|  | Brushed Dark Platinum | 83 510 979-99 |

83 510 979 Product version from 7/1/2023

mm [inches]

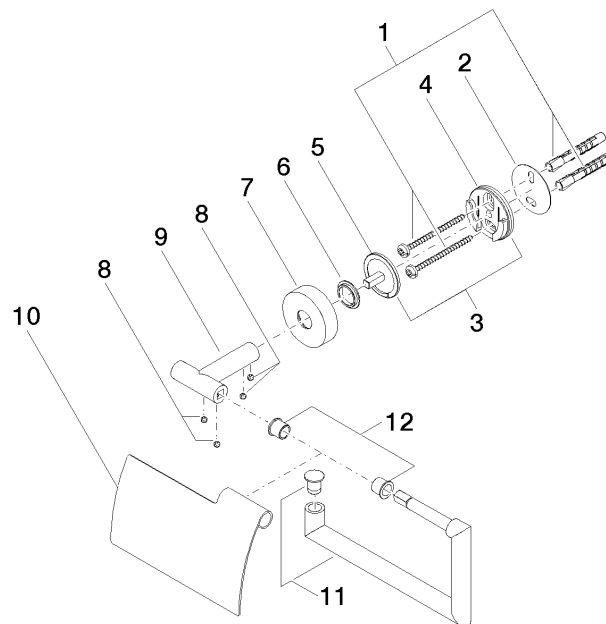


Tissue holder with cover - Light Gold

SERIES SPECIFIC

83 510 979 Product version from 7/1/2023

Parts for other
finishes can be found
here: [Chrome](#)



Spare parts list

| No. | Item Number | Name | Quantity used | Delivery time |
|-----|-----------------------|------------|---------------|---------------|
| | 3 05 17 97 501 01 90 | holder | 1.00 | 2 |
| | 5 08 17 97 559 90 | holder | 1.00 | 2 |
| | 9 05 17 97 562 01-26 | holder | 1.00 | 60 |
| | 7 08 27 97 500-26 | rosette | 1.00 | 60 |
| | 6 08 30 11 516 90 | ring | 1.00 | 2 |
| | 10 08 11 02 514-26 | lid | 1.00 | 60 |
| | 11 90 28 22 628 00-26 | holder | 1.00 | 20 |
| | 2 05 30 11 519 00 90 | disc | 1.00 | 2 |
| | 1 05 30 31 025 00 90 | fixing set | 1.00 | 2 |
| | 8 90 31 11 038 00 90 | pin | 4.00 | 2 |
| | 4 08 17 97 501 07 | holder | 1.00 | 2 |
| | 12 08 18 40 501 90 | sleeve | 1.00 | 2 |