

IMO xTOOL Thermostat module with 3 valves - Dark Chrome

IMO

ST 060 111 3980



- cover plate 120 x 120 mm
- rosette 60 x 60 mm
- temperature control handle with safety limit stop at 38°C
- thermostat cartridge
- 3x head part with cut-to-length spindle and sleeve

	Dark Chrome	ST 060 111 3980-19
	Chrome	ST 060 111 3980-00
	Brushed Platinum	ST 060 111 3980-06
	Platinum	ST 060 111 3980-08
	Brushed Light Gold	ST 060 111 3980-27
	Brushed Durabronze (23kt Gold)	ST 060 111 3980-28
	Matte Black	ST 060 111 3980-33
	Brushed Chrome	ST 060 111 3980-93
	Brushed Dark Platinum	ST 060 111 3980-99

Individual components of this set

You need the following components for this set



1x 36 503 780-19



3x 36 607 980-19

IMO xTOOL Thermostat module with 3 valves - Dark Chrome

IMO

ST 060 111 3980



- cover plate 120 x 120 mm
- temperature control handle with safety limit stop at 38°C
- thermostat cartridge
- WRAS 2011026

Fits: IMO, MEM, CL.1, CYO

	Dark Chrome	36 503 780-1
	Chrome	36 503 780-0
	Brushed Platinum	36 503 780-0
	Platinum	36 503 780-0
	Brushed Light Gold	36 503 780-2
	Brushed Durabron (23kt Gold)	36 503 780-2
	Matte Black	36 503 780-3
	Brushed Champagne (22kt Gold)	36 503 780-4
	Champagne (22kt Gold)	36 503 780-4
	Brushed Chrome	36 503 780-9
	Brushed Dark Platinum	36 503 780-9

ST 060 111 3980

9  
—  
0  
—  
6  
—  
8  
—  
7  
—  
8  
—  
3  
—  
6  
—  
7  
—  
3  
—  
9  
—

Required miscellaneous



**xTOOL Concealed thermostat  
module without volume control -**  
●max. recess depth 155 mm  
●min. recess depth 115 mm

35 503 970 90

Recommended miscellaneous



**xGRID Attachment set for  
integrating in the dry wall  
construction -**

12 340 970 90

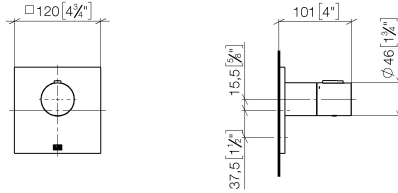
Required miscellaneous



**xGRID Installation track 555 mm -** 12 360 970 90

ST 060 111 3980

mm [inches]

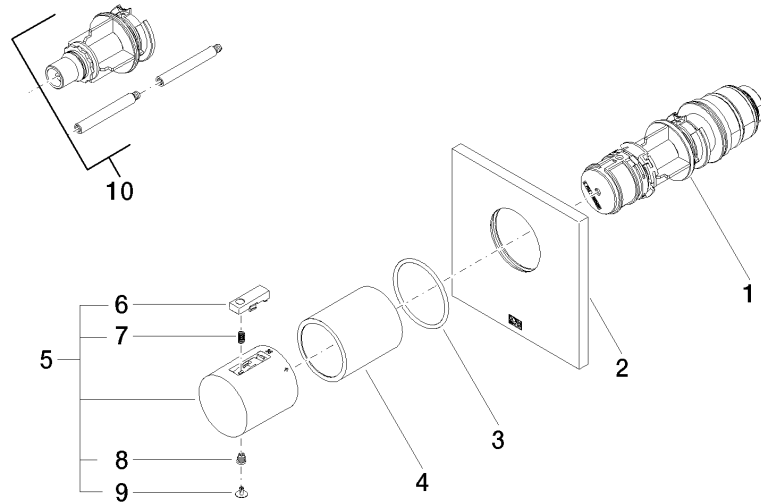


Certificates

LGA_29	DVGW_DW-6512DN0	WRAS_2011
--------	-----------------	-----------

Codes & Standards

DIN 4109	EN 1111	ISO 3822	Scottish Water Byelaws
UK Water Supply Regulations	Ü-Zeichen		



ST 060 111 3980

Spare parts list



- rosette 60 x 60 mm
- head part with cut-to-length spindle and sleeve
- WRAS 2011026, 2010066

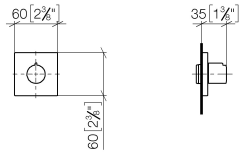
	Dark Chrome	36 607 980-1
	Chrome	36 607 980-0
	Brushed Platinum	36 607 980-0
	Platinum	36 607 980-0
	Brushed Light Gold	36 607 980-2
	Brushed Durabronze (23kt Gold)	36 607 980-2
	Matte Black	36 607 980-3
	Brushed Chrome	36 607 980-9
	Brushed Dark Platinum	36 607 980-9

9  
—  
10  
—  
16  
—  
18  
—  
17  
—  
18  
—  
13  
—  
13  
—  
19  
—



ST 060 111 3980

mm [inches]



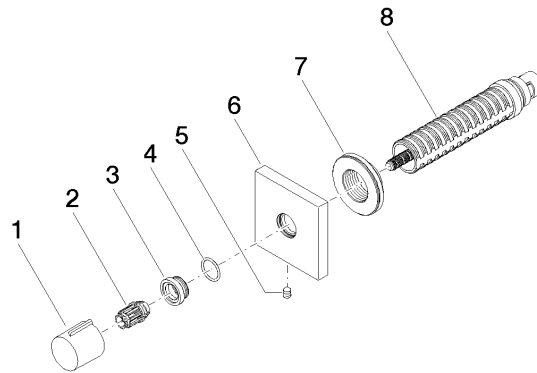
Certificates

WRAS_2010	LGA_29	DVGW_DW-6512DN0	WRAS_2011
-----------	--------	-----------------	-----------

Codes & Standards

DIN 4109	EN 1111	ISO 3822	Scottish Water Byelaws
UK Water Supply Regulations	Ü-Zeichen		

Parts for other  
finishes can be found  
here: [Chrome](#)



## Spare parts list