

IMO xTOOL Thermostat module with 3 valves - Brushed Chrome

IMO

ST 060 111 3980



- cover plate 120 x 120 mm
- rosette 60 x 60 mm
- temperature control handle with safety limit stop at 38°C
- thermostat cartridge
- 3x head part with cut-to-length spindle and sleeve

|  |                                   |                    |
|--|-----------------------------------|--------------------|
|  | Brushed Chrome                    | ST 060 111 3980-93 |
|  | Chrome                            | ST 060 111 3980-00 |
|  | Brushed Platinum                  | ST 060 111 3980-06 |
|  | Platinum                          | ST 060 111 3980-08 |
|  | Dark Chrome                       | ST 060 111 3980-19 |
|  | Brushed Light Gold                | ST 060 111 3980-27 |
|  | Brushed Durabronze<br>(23kt Gold) | ST 060 111 3980-28 |
|  | Matte Black                       | ST 060 111 3980-33 |
|  | Brushed Dark<br>Platinum          | ST 060 111 3980-99 |

Individual components of this set

You need the following components for this set

1x 36 503 780-93



3x 36 607 980-93




ST 060 111 3980

Error: Subreport could not be shown.



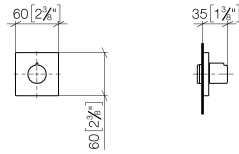
- rosette 60 x 60 mm
- head part with cut-to-length spindle and sleeve
- WRAS 2011026, 2010066

|  |                                 |              |
|--|---------------------------------|--------------|
|    | Brushed Chrome                  | 36 607 980-9 |
|    | Chrome                          | 36 607 980-0 |
|    | Brushed Platinum                | 36 607 980-0 |
|    | Platinum                        | 36 607 980-0 |
|    | Dark Chrome                     | 36 607 980-1 |
|    | Brushed Light Gold              | 36 607 980-2 |
|    | Brushed Durabass<br>(23kt Gold) | 36 607 980-2 |
|   | Matte Black                     | 36 607 980-3 |
|  | Brushed Dark<br>Platinum        | 36 607 980-9 |

3  
—  
0  
—  
6  
—  
8  
—  
9  
—  
7  
—  
8  
—  
3  
—  
9  
—

ST 060 111 3980

mm [inches]



Certificates

|                 |            |           |        |        |
|-----------------|------------|-----------|--------|--------|
| DVGW_DW-6501DN0 | IAPMO_4976 | WRAS_2010 | LGA_29 | LGA_29 |
| DVGW_DW-6512DN0 | WRAS_2011  |           |        |        |

Codes & Standards

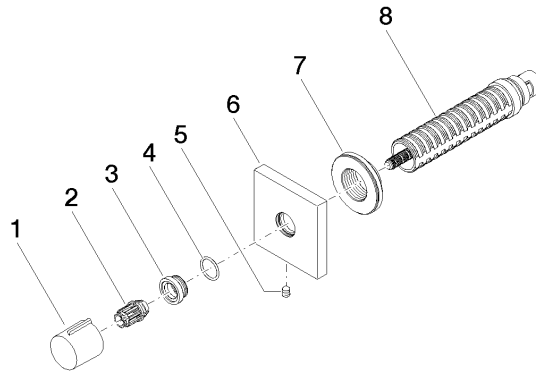
|                |          |                           |                                |
|----------------|----------|---------------------------|--------------------------------|
| ASME A112.18.1 | cUPC     | DIN 4109                  | EN 1111                        |
| EN 200         | ISO 3822 | Scottish Water<br>Byelaws | UK Water Supply<br>Regulations |

Ü-Zeichen

ST 060 111 3980

**Product version from 6/1/2024**

Parts for other  
finishes can be found  
here: Chrome





IMO xTOOL Thermostat module with 3 valves - Brushed Chrome

IMO

ST 060 111 3980

Spare parts list

Product version from 6/1/2024

| No. | Item Number     | Name   | Quantity used | Delivery time |
|-----|-----------------|--------|---------------|---------------|
|     | 09 20 98 001-93 | handle | 8             | 20            |