

IMO xTOOL Thermostat module with 3 valves - Brushed Dark Platinum

IMO

ST 060 111 3980



- cover plate 120 x 120 mm
- rosette 60 x 60 mm
- temperature control handle with safety limit stop at 38°C
- thermostat cartridge
- 3x head part with cut-to-length spindle and sleeve

	Brushed Dark Platinum	ST 060 111 3980-99
	Chrome	ST 060 111 3980-00
	Brushed Platinum	ST 060 111 3980-06
	Platinum	ST 060 111 3980-08
	Dark Chrome	ST 060 111 3980-19
	Brushed Light Gold	ST 060 111 3980-27
	Brushed Durabronze (23kt Gold)	ST 060 111 3980-28
	Matte Black	ST 060 111 3980-33
	Brushed Chrome	ST 060 111 3980-93

Individual components of this set

You need the following components for this set

1x 36 503 780-99



3x 36 607 980-99






ST 060 111 3980

Error: Subreport could not be shown.



- rosette 60 x 60 mm
- head part with cut-to-length spindle and sleeve
- WRAS 2011026, 2010066

	Brushed Dark Platinum	36 607 980-9
	Chrome	36 607 980-0
	Brushed Platinum	36 607 980-0
	Platinum	36 607 980-0
	Dark Chrome	36 607 980-1
	Brushed Light Gold	36 607 980-2
	Brushed Durabass (23kt Gold)	36 607 980-2
	Matte Black	36 607 980-3
	Brushed Chrome	36 607 980-9

ST 060 111 3980

9
—
10
—
16
—
18
—
9
—
17
—
18
—
13
—
13
—

Required miscellaneous

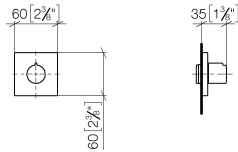


- Wall valve 1/2" -
- max. recess depth 145 mm
 - min. recess depth 75 mm

35 607 970 90

ST 060 111 3980

mm [inches]



Certificates

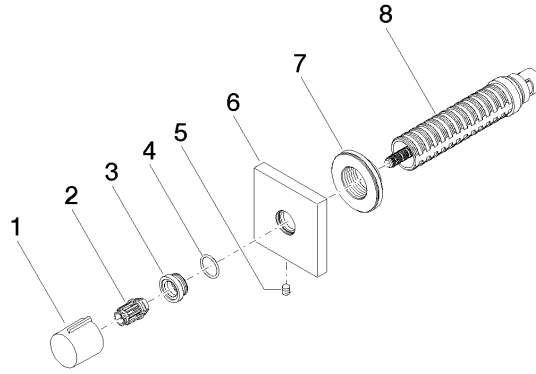
DVGW_DW-6501DN0	IAPMO_4976	WRAS_2010	LGA_29	LGA_29
DVGW_DW-6512DN0	WRAS_2011			

Codes & Standards

ASME A112.18.1	cUPC	DIN 4109	EN 1111
EN 200	ISO 3822	Scottish Water Byelaws	UK Water Supply Regulations

Ü-Zeichen

Product version from 6/1/2024





IMO xTOOL Thermostat module with 3 valves - Brushed Dark Platinum

IMO

ST 060 111 3980

Spare parts list

Product version from 6/1/2024

No.	Item Number	Name	Quantity used	Delivery time
	09 20 98 001-99	handle	8	30