





VAIA xTOOL Thermostat module with 3 valves - Champagne (22kt Gold)

VAIA

ST 060 112 5809



- cover plate Ø 124 mm
- rosette Ø 60 mm
- temperature control handle with safety limit stop at 38°C
- thermostat cartridge
- 3x head part with cut-to-length spindle and sleeve

	Champagne (22kt Gold)	ST 060 112 5809-47
	Chrome	ST 060 112 5809-00
	Brushed Platinum	ST 060 112 5809-06
	Platinum	ST 060 112 5809-08
	Dark Chrome	ST 060 112 5809-19
	Brushed Durabrass (23kt Gold)	ST 060 112 5809-28
	Brushed Bronze	ST 060 112 5809-42
	Brushed Champagne (22kt Gold)	ST 060 112 5809-46
	Brushed Dark Platinum	ST 060 112 5809-99

Individual components of this set

You need the following components for this set



1x 36 503 979-47



3x 36 607 809-47

ST 060 112 5809

Error: Subreport could not be shown.



- rosette Ø 60 mm
- head part with cut-to-length spindle and sleeve
- WRAS 2011026, 2010066

	Champagne (22kt Gold)	36 607 809-4
	Chrome	36 607 809-0
	Brushed Platinum	36 607 809-0
	Platinum	36 607 809-0
	Dark Chrome	36 607 809-1
	Brushed Durabronze (23kt Gold)	36 607 809-2
	Brushed Bronze	36 607 809-4
	Brushed Champagne (22kt Gold)	36 607 809-4
	Brushed Dark Platinum	36 607 809-9

ST 060 112 5809

.7
—
10
—
16
—
18
—
9
—
8
—
2
—
6
—
9
—

Required miscellaneous

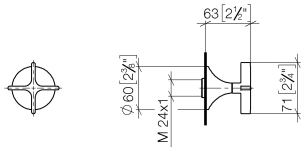


- Wall valve 1/2" -
- max. recess depth 145 mm
 - min. recess depth 75 mm

35 607 970 90

ST 060 112 5809

mm [inches]



Certificates

DVGW_DW-6501DN0	WRAS_2010	LGA_29	DVGW_DW-6512DN0	WRAS_2011
-----------------	-----------	--------	-----------------	-----------

Codes & Standards

DIN 4109

EN 1111

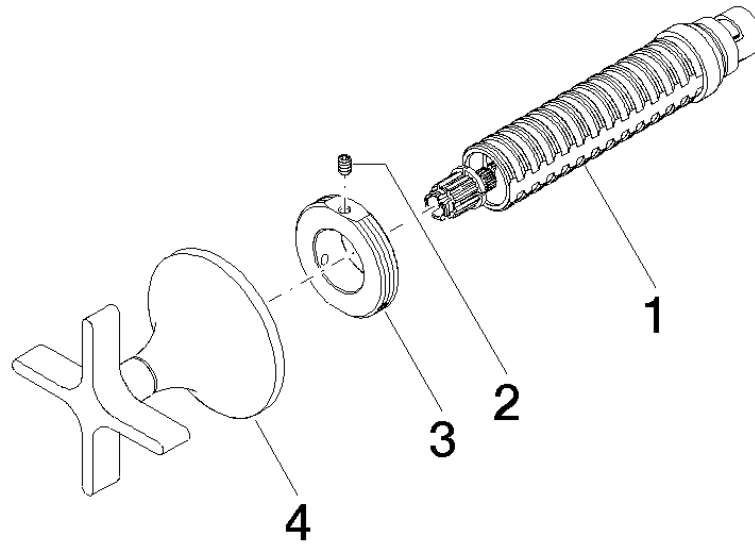
EN 200

ISO 3822

Scottish Water
Byelaws

UK Water Supply
Regulations

Ü-Zeichen





ST 060 112 5809

Spare parts list

No.	Item Number	Name	Quantity used	Delivery time
	90 90 03 143 00 90	top	4	2