

VAIA xTOOL Thermostat module with 2 valves - Champagne (22kt Gold)

VAIA

ST 060 112 6819



- cover plate Ø 124 mm
- rosette Ø 60 mm
- temperature control handle with safety limit stop at 38°C
- thermostat cartridge
- 2x head part with cut-to-length spindle and sleeve

|  |                               |                    |
|--|-------------------------------|--------------------|
|  | Champagne (22kt Gold)         | ST 060 112 6819-47 |
|  | Chrome                        | ST 060 112 6819-00 |
|  | Brushed Platinum              | ST 060 112 6819-06 |
|  | Platinum                      | ST 060 112 6819-08 |
|  | Dark Chrome                   | ST 060 112 6819-19 |
|  | Brushed Durabrass (23kt Gold) | ST 060 112 6819-28 |
|  | Brushed Bronze                | ST 060 112 6819-42 |
|  | Brushed Champagne (22kt Gold) | ST 060 112 6819-46 |
|  | Brushed Dark Platinum         | ST 060 112 6819-99 |

Individual components of this set

You need the following components for this set



1x 36 503 979-47




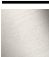



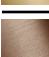

2x 36 607 819-47

ST 060 112 6819

Error: Subreport could not be shown.



- rosette Ø 60 mm
- head part with cut-to-length spindle and sleeve
- WRAS 2011026, 2010066

|  |                               |              |
|--|-------------------------------|--------------|
|    | Champagne (22kt Gold)         | 36 607 819-4 |
|    | Chrome                        | 36 607 819-0 |
|    | Brushed Platinum              | 36 607 819-0 |
|    | Platinum                      | 36 607 819-0 |
|    | Dark Chrome                   | 36 607 819-1 |
|    | Brushed Durabrass (23kt Gold) | 36 607 819-2 |
|    | Brushed Bronze                | 36 607 819-4 |
|   | Brushed Champagne (22kt Gold) | 36 607 819-4 |
|  | Brushed Dark Platinum         | 36 607 819-9 |

ST 060 112 6819

.7  
—  
10  
—  
16  
—  
18  
—  
9  
—  
8  
—  
2  
—  
6  
—  
9  
—

Required miscellaneous

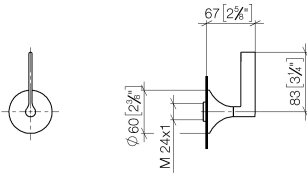


**Wall valve 1/2" -**  
●max. recess depth 145 mm  
●min. recess depth 75 mm

35 607 970 90

ST 060 112 6819

mm [inches]



Certificates

|                 |           |        |                 |           |
|-----------------|-----------|--------|-----------------|-----------|
| DVGW_DW-6501DN0 | WRAS_2010 | LGA_29 | DVGW_DW-6512DN0 | WRAS_2011 |
|-----------------|-----------|--------|-----------------|-----------|

Codes & Standards

DIN 4109

EN 1111

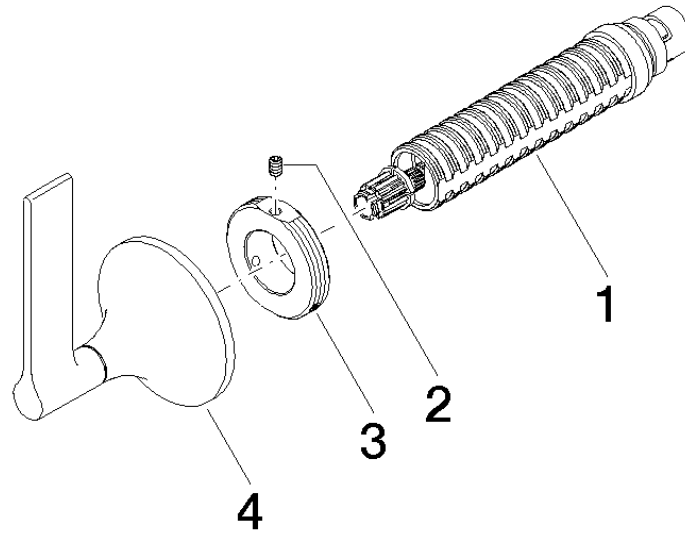
EN 200

ISO 3822

Scottish Water  
Byelaws

UK Water Supply  
Regulations

Ü-Zeichen





ST 060 112 6819

Spare parts list

| No. | Item Number        | Name | Quantity used | Delivery time |
|-----|--------------------|------|---------------|---------------|
|     | 90 90 03 143 00 90 | top  | 4             | 2             |