

TARA xTOOL Thermostat module with 2 valves - Champagne (22kt Gold)

TARA

ST 060 112 8892



- cover plate Ø 124 mm
- rosette Ø 55 mm
- temperature control handle with safety limit stop at 38°C
- thermostat cartridge
- 2x head part with cut-to-length spindle and sleeve

	Champagne (22kt Gold)	ST 060 112 8892-47
	Chrome	ST 060 112 8892-00
	Brushed Platinum	ST 060 112 8892-06
	Platinum	ST 060 112 8892-08
	Brushed Light Gold	ST 060 112 8892-27
	Brushed Durabrass (23kt Gold)	ST 060 112 8892-28
	Matte Black	ST 060 112 8892-33
	Brushed Champagne (22kt Gold)	ST 060 112 8892-46
	Brushed Chrome	ST 060 112 8892-93
	Brushed Dark Platinum	ST 060 112 8892-99

Individual components of this set

You need the following components for this set

1x 36 503 979-47

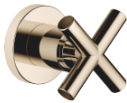


2x 36 607 892-47



ST 060 112 8892

Error: Subreport could not be shown.



- rosette Ø 55 mm
- head part with cut-to-length spindle and sleeve
- WRAS 2011026, 2010066

	Champagne (22kt Gold)	36 607 892-4
	Chrome	36 607 892-0
	Brushed Platinum	36 607 892-0
	Platinum	36 607 892-0
	Dark Chrome	36 607 892-1
	Brushed Durabrass (23kt Gold)	36 607 892-2
	Matte Black	36 607 892-3
	Brushed Bronze	36 607 892-4
	Brushed Champagne (22kt Gold)	36 607 892-4
	Brushed Chrome	36 607 892-9
	Brushed Dark Platinum	36 607 892-9

ST 060 112 8892

.7

—

10

—

16

—

18

—

9

—

8

—

3

—

2

—

6

—


3

—

9

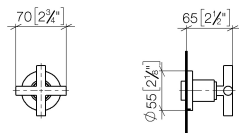
—

Required miscellaneous

	Wall valve 1/2" -	35 607 970 90
	•max. recess depth 145 mm	
	•min. recess depth 85 mm	

ST 060 112 8892

mm [inches]



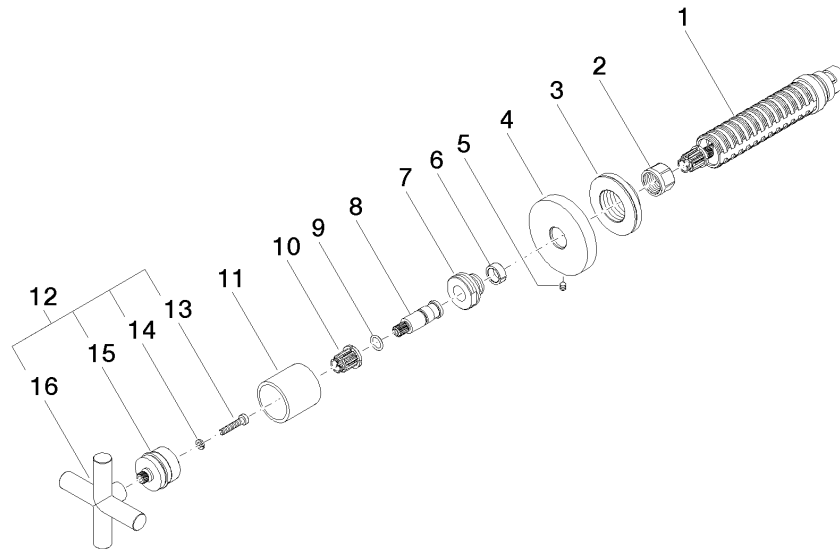
Certificates

DVGW_DW-6501DN0	WRAS_2010	LGA_29	DVGW_DW-6512DN0	WRAS_2011
-----------------	-----------	--------	-----------------	-----------

Codes & Standards

DIN 4109	EN 1111	EN 200	ISO 3822
Scottish Water Byelaws	UK Water Supply Regulations	Ü-Zeichen	

Product version from 10/27/2020



Spare parts list

Product version from 10/27/2020