

TARA xTOOL Thermostat module with 3 valves - Champagne (22kt Gold)

TARA

ST 060 112 9892



- cover plate Ø 124 mm
- rosette Ø 55 mm
- temperature control handle with safety limit stop at 38°C
- thermostat cartridge
- 3x head part with cut-to-length spindle and sleeve

	Champagne (22kt Gold)	ST 060 112 9892-47
	Chrome	ST 060 112 9892-00
	Brushed Platinum	ST 060 112 9892-06
	Platinum	ST 060 112 9892-08
	Brushed Light Gold	ST 060 112 9892-27
	Brushed Durabrass (23kt Gold)	ST 060 112 9892-28
	Matte Black	ST 060 112 9892-33
	Brushed Champagne (22kt Gold)	ST 060 112 9892-46
	Brushed Chrome	ST 060 112 9892-93
	Brushed Dark Platinum	ST 060 112 9892-99

Individual components of this set

You need the following components for this set

1x 36 503 979-47

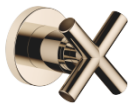


3x 36 607 892-47



ST 060 112 9892

Error: Subreport could not be shown.



- rosette Ø 55 mm
- head part with cut-to-length spindle and sleeve
- WRAS 2011026, 2010066

	Champagne (22kt Gold)	36 607 892-4
	Chrome	36 607 892-0
	Brushed Platinum	36 607 892-0
	Platinum	36 607 892-0
	Dark Chrome	36 607 892-1
	Brushed Durabrass (23kt Gold)	36 607 892-2
	Matte Black	36 607 892-3
	Brushed Bronze	36 607 892-4
	Brushed Champagne (22kt Gold)	36 607 892-4
	Brushed Chrome	36 607 892-9
	Brushed Dark Platinum	36 607 892-9

ST 060 112 9892

.7
—
10
—
16
—
18
—
9
—
8
—
3
—
2
—
6
—
3
—
9
—

Required miscellaneous

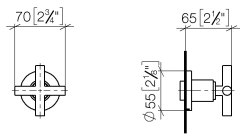


- Wall valve 1/2" -**
 - max. recess depth 145 mm
 - min. recess depth 85 mm

35 607 970 90

ST 060 112 9892

mm [inches]



Certificates

DVGW_DW-6501DN0	WRAS_2010	LGA_29	DVGW_DW-6512DN0	WRAS_2011
-----------------	-----------	--------	-----------------	-----------

Codes & Standards

DIN 4109

EN 1111

EN 200

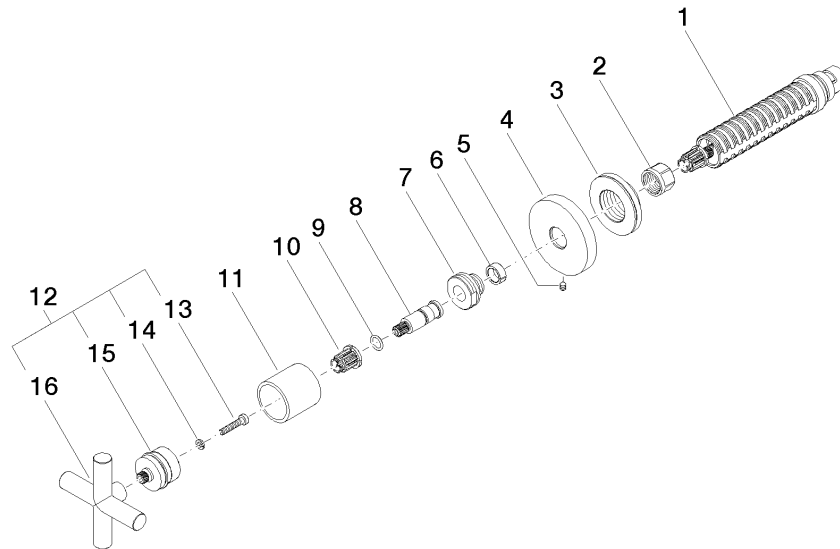
ISO 3822

Scottish Water
Byelaws

UK Water Supply
Regulations

Ü-Zeichen

Product version from 10/27/2020



Spare parts list

Product version from 10/27/2020