









# ELIO Single-lever mixer with rinsing spray set - Platinum

ELIO

ST 110 106 1790



- 234mm projection
- pivotable spout 360°
- spout, end-piece with 20° rotation
- air-enriched flow and spray flow
- automatic spout/shower diverter
- height of mixer 337 mm
- height up to aerator 297 mm
- single-lever mixer hole diameter 35 mm
- hole diameter rinsing spray 32mm
- fabric braided hose 1500 mm
- sprayface with anti-scaling system
- max. flow 8 l/min at 3 bar flow pressure
- lead-free
- This product can help a building meet the requirements of Green Building Rating Systems, e.g. LEED®, BREEAM®, DGNB

	Platinum	ST 110 106 1790-08
	Chrome	ST 110 106 1790-00
	Brushed Platinum	ST 110 106 1790-06
	Dark Chrome	ST 110 106 1790-19
	Brushed Durabass (23kt Gold)	ST 110 106 1790-28
	Brushed Champagne (22kt Gold)	ST 110 106 1790-46
	Champagne (22kt Gold)	ST 110 106 1790-47
	Brushed Chrome	ST 110 106 1790-93
	Brushed Dark Platinum	ST 110 106 1790-99

## Individual components of this set

You need the following components for this set



1x 27 721 970-08



1x 33 826 790-08

# ELIO Single-lever mixer with rinsing spray set - Platinum

ELIO

ST 110 106 1790



Fits: ELIO, TARA, TARA ULTRA

- with round rosette
- spray flow
- automatic spout/shower diverter
- height of mixer 191 mm
- hole diameter rinsing spray 32mm
- fabric braided hose 1500 mm
- sprayface with anti-scaling system
- lead-free

Can only be combined with 33826790, 32800790, 33826888, 32815888, 20815892, 33826875.

Intrinsic protection against back flow.

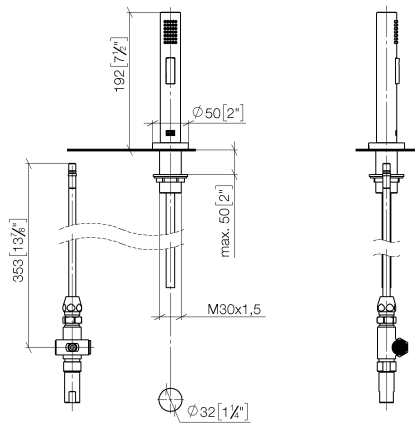
	Platinum	27 721 970-0
	Chrome	27 721 970-0
	Brushed Platinum	27 721 970-0
	Durabrand (23kt Gold)	27 721 970-0
	Dark Chrome	27 721 970-1
	Brushed Durabrand (23kt Gold)	27 721 970-2
	Matte Black	27 721 970-3
	Brushed Champagne (22kt Gold)	27 721 970-4
	Champagne (22kt Gold)	27 721 970-4
	Brushed Chrome	27 721 970-9
	Brushed Dark Platinum	27 721 970-9

ST 110 106 1790

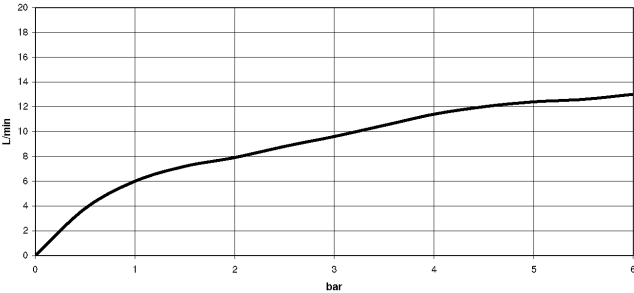
8  
—  
0  
—  
6  
—  
9  
—  
9  
—  
8  
—  
3  
—  
6  
—  
7  
—  
3  
—  
9  
—

ST 110 106 1790

mm [inches]



### Flow rate chart



### Certificates

LGA\_29      IAPMO\_N-4976      IAPMO\_6      LGA\_18      Belgaqua\_21-027-2



ELIO Single-lever mixer with rinsing spray set - Platinum

ELIO

ST 110 106 1790

Codes & Standards

DIN 4109	EN 1717	ISO 3822	NSF372
NSF61	Ü-Zeichen		

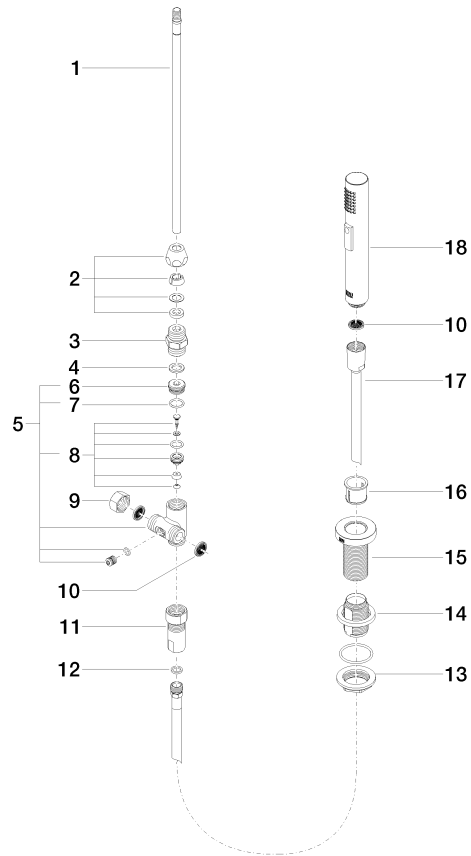


ST 110 106 1790

Product version up to 10/27/2020

**Product version from 10/27/2020**

Parts for other  
finishes can be found  
here: Chrome





ELIO Single-lever mixer with rinsing spray set - Platinum

ELIO

ST 110 106 1790

Spare parts list

Product version up to 10/27/2020

**Product version from 10/27/2020**

No.	Item Number	Name	Quantity used	Delivery time
	04 24 02 046 01-07	pipe	19	10



# ELIO Single-lever mixer with rinsing spray set - Platinum

ELIO

ST 110 106 1790



- 234mm projection
  - pivotable spout 360°
  - spout, end-piece with 20° rotation
  - air-enriched flow
  - height of mixer 337 mm
  - height up to aerator 297 mm
  - single-lever mixer hole diameter 35mm
  - max. flow 8 l/min at 3 bar flow pressure
  - lead-free
  - This product can help a building meet the requirements of Green Building Rating Systems, e.g. LEED®, BREEAM®, DGNB
- Single-lever mixer for combining with rinsing/Profi spray only

	Platinum	33 826 790-0
	Chrome	33 826 790-0
	Brushed Platinum	33 826 790-0
	Dark Chrome	33 826 790-1
	Brushed Durabronze (23kt Gold)	33 826 790-2
	Brushed Champagne (22kt Gold)	33 826 790-4
	Champagne (22kt Gold)	33 826 790-4
	Brushed Chrome	33 826 790-9
	Brushed Dark Platinum	33 826 790-9

ST 110 106 1790

8  
—  
0  
—  
6  
—  
9  
—  
8  
—  
6  
—  
7  
—  
3  
—  
9  
—

Required miscellaneous



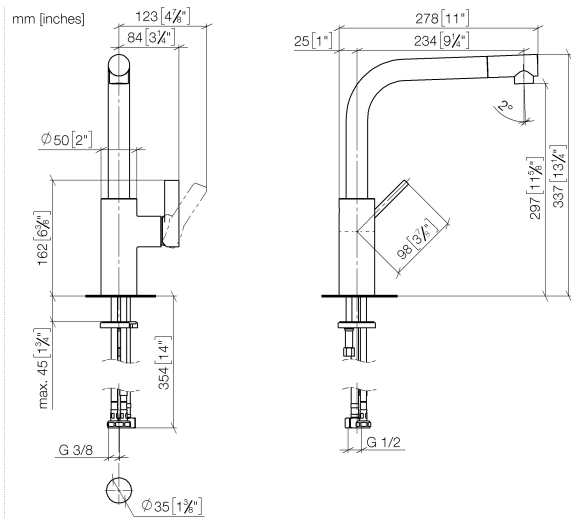
Rinsing spray set - Platinum27 721 970-08

Required miscellaneous

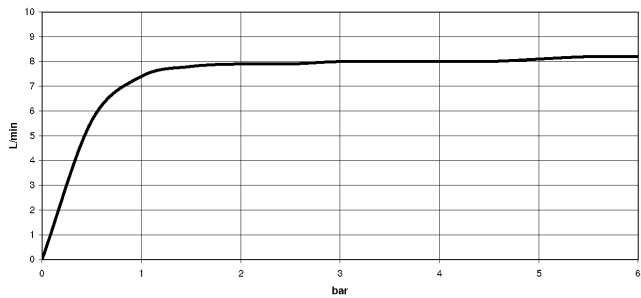


Profi spray set - Platinum27 789 970-08

ST 110 106 1790



Flow rate chart



Certificates

LGA\_18

GDV\_0400



ELIO Single-lever mixer with rinsing spray set - Platinum

ELIO

ST 110 106 1790

Codes & Standards

DIN 4109	Executive Order no. 1007	ISO 3822	Ü-Zeichen
----------	-----------------------------	----------	-----------



ST 110 106 1790

Product version from 5/31/2010 to 5/15/2020

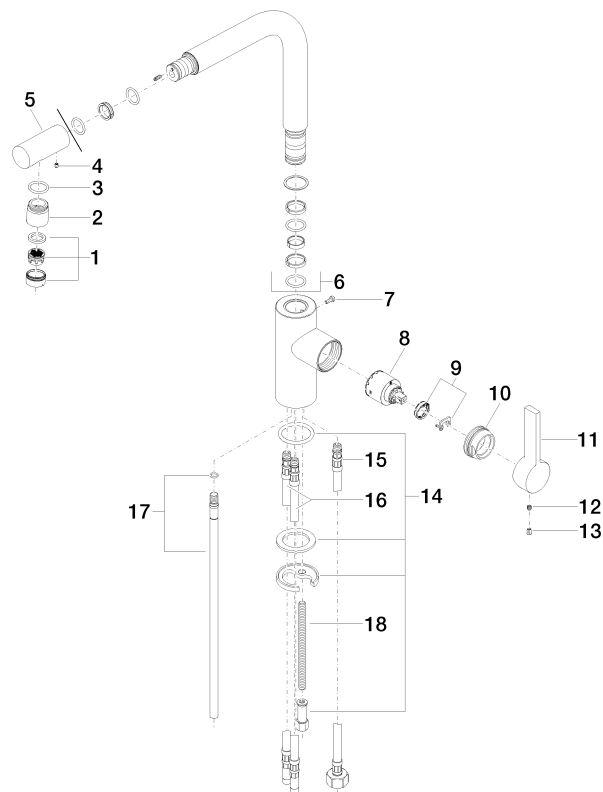
Product version from 5/15/2020 to 3/10/2021

Product version from 3/10/2021 to 5/5/2021

Product version from 5/5/2021

**Product version from 6/1/2022**

Parts for other  
finishes can be found  
here: [Chrome](#)



ST 110 106 1790

Spare parts list

Product version from 5/31/2010 to 5/15/2020

Product version from 5/15/2020 to 3/10/2021

Product version from 3/10/2021 to 5/5/2021

Product version from 5/5/2021

Product version from 6/1/2022

No.	Item Number	Name	Quantity used	Delivery time
	90 23 01 026 07-08	aerator	18	40