










ELIO Single-lever mixer with rinsing spray set - Dark Chrome

ELIO

ST 110 106 1790



- 234mm projection
- pivotable spout 360°
- spout, end-piece with 20° rotation
- air-enriched flow and spray flow
- automatic spout/shower diverter
- height of mixer 337 mm
- height up to aerator 297 mm
- single-lever mixer hole diameter 35 mm
- hole diameter rinsing spray 32mm
- fabric braided hose 1500 mm
- sprayface with anti-scaling system
- max. flow 8 l/min at 3 bar flow pressure
- lead-free
- This product can help a building meet the requirements of Green Building Rating Systems, e.g. LEED®, BREEAM®, DGNB


	Dark Chrome	ST 110 106 1790-19
	Chrome	ST 110 106 1790-00
	Brushed Platinum	ST 110 106 1790-06
	Platinum	ST 110 106 1790-08
	Brushed Durabrass (23kt Gold)	ST 110 106 1790-28
	Brushed Champagne (22kt Gold)	ST 110 106 1790-46
	Champagne (22kt Gold)	ST 110 106 1790-47
	Brushed Chrome	ST 110 106 1790-93
	Brushed Dark Platinum	ST 110 106 1790-99

Individual components of this set

You need the following components for this set


1x

33 826 790-19



1x

27 721 970-19



# ELIO Single-lever mixer with rinsing spray set - Dark Chrome

ELIO

ST 110 106 1790



- 234mm projection
  - pivotable spout 360°
  - spout, end-piece with 20° rotation
  - air-enriched flow
  - height of mixer 337 mm
  - height up to aerator 297 mm
  - single-lever mixer hole diameter 35mm
  - max. flow 8 l/min at 3 bar flow pressure
  - lead-free
  - This product can help a building meet the requirements of Green Building Rating Systems, e.g. LEED®, BREEAM®, DGNB
- Single-lever mixer for combining with rinsing/Profi spray only

	Dark Chrome	33 826 790-1
	Chrome	33 826 790-0
	Brushed Platinum	33 826 790-0
	Platinum	33 826 790-0
	Brushed Durabronze (23kt Gold)	33 826 790-2
	Brushed Champagne (22kt Gold)	33 826 790-4
	Champagne (22kt Gold)	33 826 790-4
	Brushed Chrome	33 826 790-9
	Brushed Dark Platinum	33 826 790-9

ELIO Single-lever mixer with rinsing spray set - Dark Chrome

ELIO

ST 110 106 1790

9  
—  
0  
—  
6  
—  
8  
—  
8  
—  
6  
—  
7  
—  
3  
—  
9  
—

Required miscellaneous



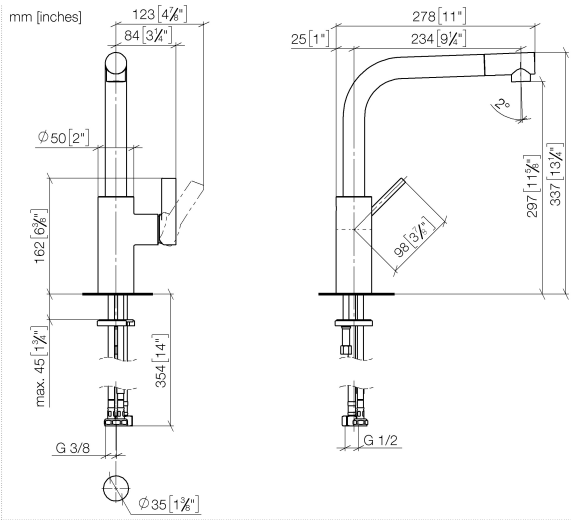
**Rinsing spray set - Dark Chrome** 27 721 970-19

Required miscellaneous

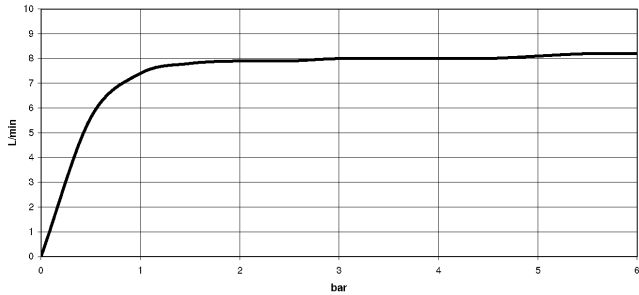


**Profi spray set - Dark Chrome** 27 789 970-19

ST 110 106 1790



Flow rate chart



Certificates

GDV\_0400



## ELIO Single-lever mixer with rinsing spray set - Dark Chrome

---

ELIO

ST 110 106 1790

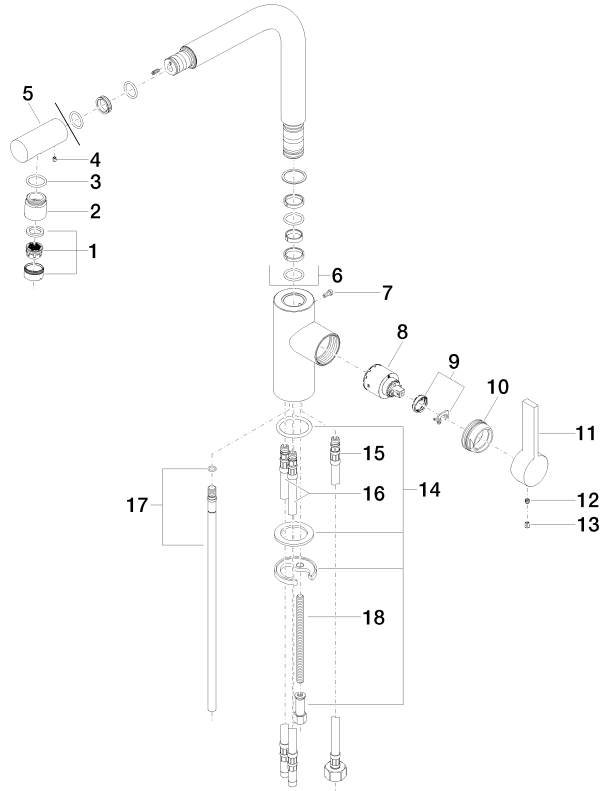
### Codes & Standards

---

Executive Order  
no. 1007



Parts for other  
finishes can be found  
here: [Chrome](#)



**Spare parts list**



Fits: ELIO, TARA, TARA ULTRA

- with round rosette
- spray flow
- automatic spout/shower diverter
- height of mixer 191 mm
- hole diameter rinsing spray 32mm
- fabric braided hose 1500 mm
- sprayface with anti-scaling system
- lead-free

Can only be combined with 33826790, 32800790, 33826888, 32815888, 20815892, 33826875.  
Intrinsic protection against back flow.

	Dark Chrome	27 721 970-1
	Chrome	27 721 970-0
	Brushed Platinum	27 721 970-0
	Platinum	27 721 970-0
	Durabrand (23kt Gold)	27 721 970-0
	Brushed Durabrand (23kt Gold)	27 721 970-2
	Matte Black	27 721 970-3
	Brushed Champagne (22kt Gold)	27 721 970-4
	Champagne (22kt Gold)	27 721 970-4
	Brushed Chrome	27 721 970-9
	Brushed Dark Platinum	27 721 970-9



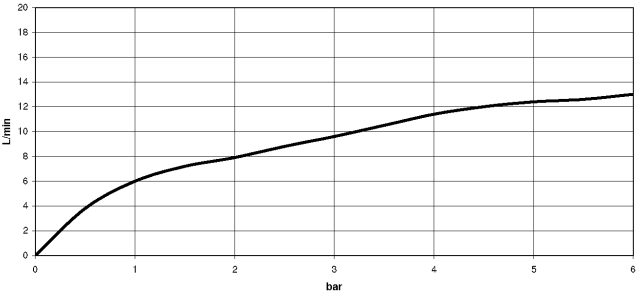
9  
—  
10  
—  
16  
—  
18  
—  
19  
—  
18  
—  
13  
—  
6  
—  
7  
—  
13  
—  
19  
—

ST 110 106 1790

mm [inches]



Flow rate chart



Certificates

LGA\_29

IAPMO\_N-4976

IAPMO\_6

LGA\_18



ELIO Single-lever mixer with rinsing spray set - Dark Chrome

ELIO

ST 110 106 1790

Codes & Standards

DIN 4109

ISO 3822

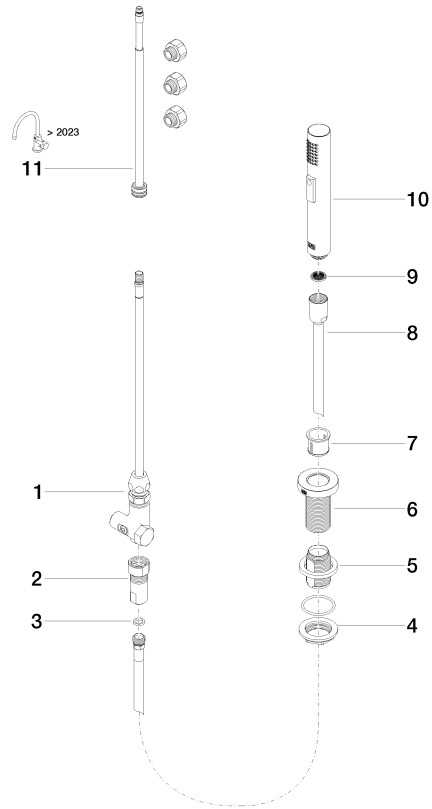
NSF372

NSF61

Ü-Zeichen



Parts for other  
finishes can be found  
here: [Chrome](#)



## Spare parts list