

ELIO Single-lever mixer with rinsing spray set - Champagne (22kt Gold)

ELIO

ST 110 106 1790



- 234mm projection
- pivotable spout 360°
- spout, end-piece with 20° rotation
- air-enriched flow and spray flow
- automatic spout/shower diverter
- height of mixer 337 mm
- height up to aerator 297 mm
- single-lever mixer hole diameter 35 mm
- hole diameter rinsing spray 32mm
- fabric braided hose 1500 mm
- sprayface with anti-scaling system
- max. flow 8 l/min at 3 bar flow pressure
- lead-free
- This product can help a building meet the requirements of Green Building Rating Systems, e.g. LEED®, BREEAM®, DGNB

	Champagne (22kt Gold)	ST 110 106 1790-47
	Chrome	ST 110 106 1790-00
	Brushed Platinum	ST 110 106 1790-06
	Platinum	ST 110 106 1790-08
	Dark Chrome	ST 110 106 1790-19
	Brushed Durabrass (23kt Gold)	ST 110 106 1790-28
	Brushed Champagne (22kt Gold)	ST 110 106 1790-46
	Brushed Chrome	ST 110 106 1790-93
	Brushed Dark Platinum	ST 110 106 1790-99

Individual components of this set

You need the following components for this set

1x 33 826 790-47



1x 27 721 970-47



ELIO Single-lever mixer with rinsing spray set - Champagne (22kt Gold)

ELIO

ST 110 106 1790



- 234mm projection
 - pivotable spout 360°
 - spout, end-piece with 20° rotation
 - air-enriched flow
 - height of mixer 337 mm
 - height up to aerator 297 mm
 - single-lever mixer hole diameter 35mm
 - max. flow 8 l/min at 3 bar flow pressure
 - lead-free
 - This product can help a building meet the requirements of Green Building Rating Systems, e.g. LEED®, BREEAM®, DGNB
- Single-lever mixer for combining with rinsing/Profi spray only

	Champagne (22kt Gold)	33 826 790-4
	Chrome	33 826 790-0
	Brushed Platinum	33 826 790-0
	Platinum	33 826 790-0
	Dark Chrome	33 826 790-1
	Brushed Durabrass (23kt Gold)	33 826 790-2
	Brushed Champagne (22kt Gold)	33 826 790-4
	Brushed Chrome	33 826 790-9
	Brushed Dark Platinum	33 826 790-9

ST 110 106 1790

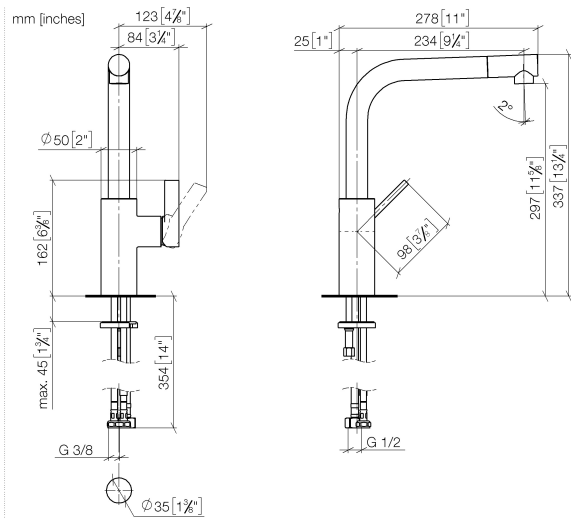
.7
—
0
—
6
—
8
—
9
—
8
—
6
—
3
—
9
—

Required miscellaneous

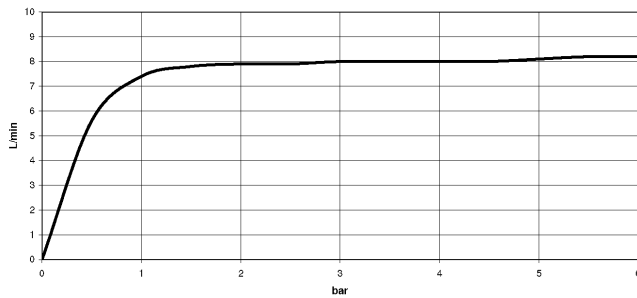


Rinsing spray set - Champagne 27 721 970-47
(22kt Gold)

ST 110 106 1790



Flow rate chart



Certificates

GDV_0400



ELIO Single-lever mixer with rinsing spray set - Champagne (22kt Gold)

ELIO

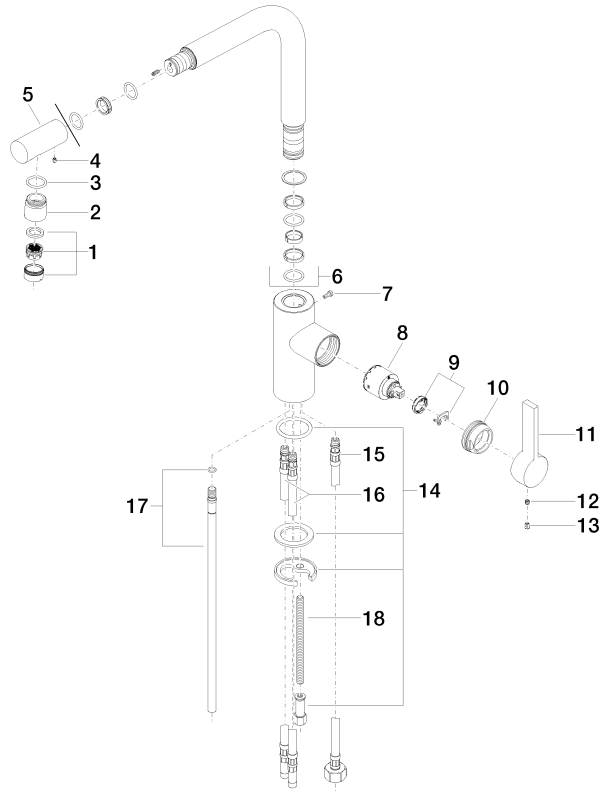
ST 110 106 1790

Codes & Standards

Executive Order
no. 1007

Product version from 6/1/2022

Parts for other
finishes can be found
here: [Chrome](#)



Spare parts list





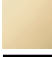



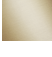


Product version from 6/1/2022



Fits: ELIO, TARA, TARA ULTRA

- with round rosette
- spray flow
- automatic spout/shower diverter
- height of mixer 191 mm
- hole diameter rinsing spray 32mm
- fabric braided hose 1500 mm
- sprayface with anti-scaling system
- lead-free

Can only be combined with 33826790, 32800790, 33826888, 32815888, 20815892, 33826875.
Intrinsic protection against back flow.

	Champagne (22kt Gold)	27 721 970-4
	Chrome	27 721 970-0
	Brushed Platinum	27 721 970-0
	Platinum	27 721 970-0
	Durabrand (23kt Gold)	27 721 970-0
	Dark Chrome	27 721 970-1
	Brushed Durabrand (23kt Gold)	27 721 970-2
	Matte Black	27 721 970-3
	Brushed Champagne (22kt Gold)	27 721 970-4
	Brushed Chrome	27 721 970-9
	Brushed Dark Platinum	27 721 970-9



ELIO Single-lever mixer with rinsing spray set - Champagne (22kt Gold)

ELIO

ST 110 106 1790

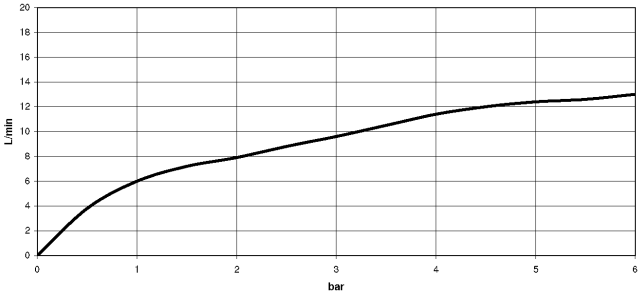
.7
—
10
—
16
—
18
—
19
—
9
—
8
—
3
—
6
—
3
—
9
—

ST 110 106 1790

mm [inches]



Flow rate chart



Certificates

LGA_29

IAPMO_N-4976

IAPMO_6

LGA_18



ELIO Single-lever mixer with rinsing spray set - Champagne (22kt Gold)

ELIO

ST 110 106 1790

Codes & Standards

DIN 4109

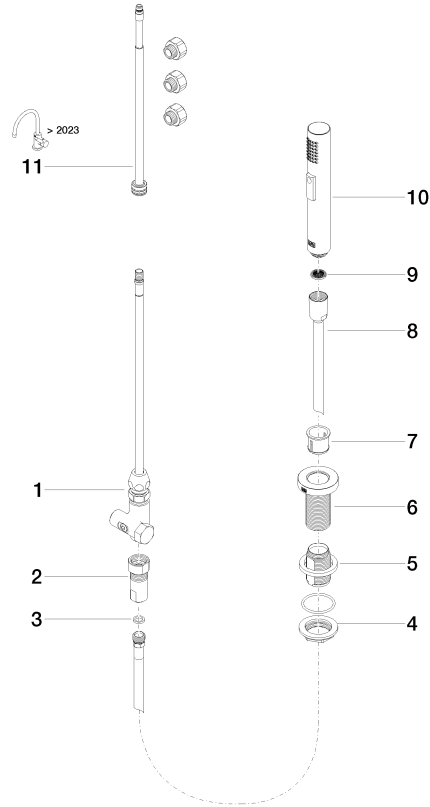
ISO 3822

NSF372

NSF61

Ü-Zeichen

Parts for other
finishes can be found
here: [Chrome](#)



Spare parts list