







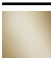

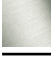


TARA Three-hole mixer with rinsing spray set - Brushed Durabronss (23kt Gold)

TARA

ST 110 201 1892



- 235mm projection
- pivotable spout 360°
- air-enriched flow and spray flow
- height of mixer 370 mm
- height up to aerator 212 mm
- hole diameter spout 35 mm
- hole diameter valve 32 mm
- hole diameter rinsing spray 32mm
- fabric braided hose 1500 mm
- automatic spout/shower diverter
- sprayface with anti-scaling system
- max. flow 7 l/min at 3 bar flow pressure
- lead-free
- This product can help a building meet the requirements of Green Building Rating Systems, e.g. LEED®, BREEAM®, DGNB

| | | |
|--|--------------------------------|--------------------|
|  | Brushed Durabronss (23kt Gold) | ST 110 201 1892-28 |
|  | Chrome | ST 110 201 1892-00 |
|  | Brushed Platinum | ST 110 201 1892-06 |
|  | Platinum | ST 110 201 1892-08 |
|  | Durabronss (23kt Gold) | ST 110 201 1892-09 |
|  | Dark Chrome | ST 110 201 1892-19 |
|  | Matte Black | ST 110 201 1892-33 |
|  | Brushed Champagne (22kt Gold) | ST 110 201 1892-46 |
|  | Champagne (22kt Gold) | ST 110 201 1892-47 |
|  | Brushed Chrome | ST 110 201 1892-93 |
|  | Brushed Dark Platinum | ST 110 201 1892-99 |

Individual components of this set

You need the following components for this set



1x 20 815 892-28



1x 27 721 970-28

TARA Three-hole mixer with rinsing spray set - Brushed Durabrand (23kt Gold)

TARA

ST 110 201 1892



- 235mm projection
- pivotable spout 360°
- air-enriched flow
- height of mixer 370 mm
- height up to aerator 212 mm
- hole diameter spout 35 mm
- hole diameter valve 32 mm
- max. flow 7 l/min at 3 bar flow pressure
- lead-free
- This product can help a building meet the requirements of Green Building Rating Systems, e.g. LEED®, BREEAM®, DGNB
- WRAS 2107052

| | | |
|--|-------------------------------|--------------|
|  | Brushed Durabrand (23kt Gold) | 20 815 892-2 |
|  | Chrome | 20 815 892-0 |
|  | Brushed Platinum | 20 815 892-0 |
|  | Platinum | 20 815 892-0 |
|  | Durabrand (23kt Gold) | 20 815 892-0 |
|  | Dark Chrome | 20 815 892-1 |
|  | Matte Black | 20 815 892-3 |
|  | Brushed Champagne (22kt Gold) | 20 815 892-4 |
|  | Champagne (22kt Gold) | 20 815 892-4 |
|  | Brushed Chrome | 20 815 892-9 |
|  | Brushed Dark Platinum | 20 815 892-9 |

ST 110 201 1892

:8
—
:0
—
:6
—
:8
—
:9
—
9
—
:3
—
6
—
:7
—
:3
—
:9
—

Recommended miscellaneous

Strainer waste with control handle 10 710 970-28
- Brushed Durabross (23kt Gold)

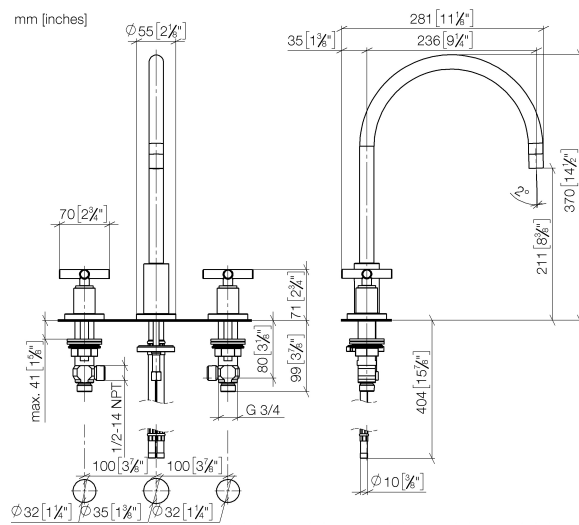


Recommended miscellaneous

Dispenser with rosette - Brushed 82 444 970-28
Durabross (23kt Gold)



ST 110 201 1892



Flow rate chart



Certificates

WRAS_2107

LGA_19

ETA_18

GDV_0400



TARA Three-hole mixer with rinsing spray set - Brushed Durabrass (23kt Gold)

TARA

ST 110 201 1892

Codes & Standards

| | | | |
|---------------------------|--------------------------------|-----------------------------|------------|
| DIN 4109 | EN 200 | Executive Order no. 1007 | ISO 3822 |
| Scottish Water Byelaws | UK Water Supply Regulations | Ü-Zeichen | VA-Zeichen |



TARA Three-hole mixer with rinsing spray set - Brushed Durabron (23kt Gold)

TARA

ST 110 201 1892

ST 110 201 1892

Spare parts list

Product version from 6/30/2009





Fits: ELIO, TARA, TARA ULTRA

- with round rosette
- spray flow
- automatic spout/shower diverter
- height of mixer 191 mm
- hole diameter rinsing spray 32mm
- fabric braided hose 1500 mm
- sprayface with anti-scaling system
- lead-free

Can only be combined with 33826790, 32800790, 33826888, 32815888, 20815892, 33826875.

Intrinsic protection against back flow.

| | | |
|--|-------------------------------|--------------|
|  | Brushed Durabrass (23kt Gold) | 27 721 970-2 |
|  | Chrome | 27 721 970-0 |
|  | Brushed Platinum | 27 721 970-0 |
|  | Platinum | 27 721 970-0 |
|  | Durabrass (23kt Gold) | 27 721 970-0 |
|  | Dark Chrome | 27 721 970-1 |
|  | Matte Black | 27 721 970-3 |
|  | Brushed Champagne (22kt Gold) | 27 721 970-4 |
|  | Champagne (22kt Gold) | 27 721 970-4 |
|  | Brushed Chrome | 27 721 970-9 |
|  | Brushed Dark Platinum | 27 721 970-9 |



TARA Three-hole mixer with rinsing spray set - Brushed Durabross (23kt Gold)

TARA

ST 110 201 1892

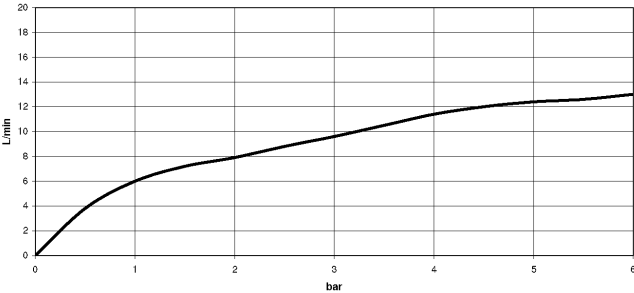
8
—
10
—
16
—
18
—
19
—
9
—
3
—
6
—
7
—
3
—
19
—

ST 110 201 1892

mm [inches]



Flow rate chart



Certificates

LGA_29 IAPMO_N-4976 IAPMO_6 LGA_18 Belgaqua_21-027-2



TARA Three-hole mixer with rinsing spray set - Brushed Durabrass (23kt Gold)

TARA

ST 110 201 1892

Codes & Standards

| | | | |
|----------|-----------|----------|--------|
| DIN 4109 | EN 1717 | ISO 3822 | NSF372 |
| NSF61 | Ü-Zeichen | | |



TARA Three-hole mixer with rinsing spray set - Brushed Durabron (23kt Gold)

TARA

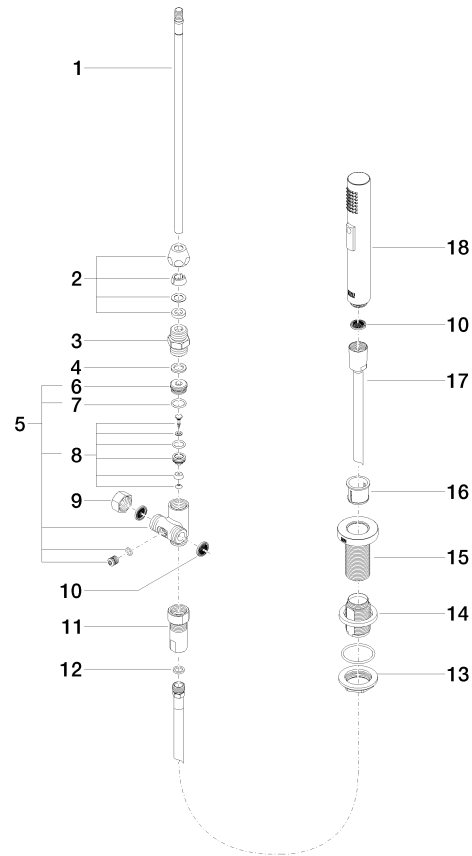
ST 110 201 1892

ST 110 201 1892

Product version up to 10/27/2020

Product version from 10/27/2020

Parts for other
finishes can be found
here: Chrome





TARA Three-hole mixer with rinsing spray set - Brushed Durabrass (23kt Gold)

TARA

ST 110 201 1892

Spare parts list

Product version up to 10/27/2020

Product version from 10/27/2020

| No. | Item Number | Name | Quantity used | Delivery time |
|-----|--------------------|------|---------------|---------------|
| | 04 24 02 046 01-07 | pipe | 19 | 10 |